



38 Upper Denmark Road, Ashford

Guide Price £260,000

Skippers

38 Upper Denmark Road

Ashford, Ashford

A well-presented three-bedroom home, situated within close walking distance of the International Station, Designer Outlet and Town Centre, with driveway parking and low maintenance West facing garden.

Council Tax band: B

Tenure: Freehold

- Guide Price £260,000 – £270,000
- Three-bedroom terraced home
- Well presented throughout
- Driveway parking for 1 car to the rear
- Lounge/Diner
- Four-piece bathroom suite
- Low maintenance West facing rear garden
- Walking distance to Ashford International Station
- Within easy reach of Ashford Designer Outlet & Town Centre



Entrance Hallway

Composite door to the front, stairs to first floor, radiator and mosaic tiled flooring.

Lounge/Diner

20' 2" x 10' 0" (6.14m x 3.05m)

Windows to the front and rear, feature fire place with media wall, recessed cupboards and under-stairs cupboards, radiators and Oak wood flooring.

Kitchen

9' 1" x 7' 10" (2.76m x 2.38m)

Window to the side and stable door opening to the garden. Fitted kitchen comprising matching and wall base units with work surfaces over, inset stainless steel sink/drain, built-in electric oven and 4-ring gas hob, plumbing and space for washing machine, space for fridge-freezer. Tiled splashback and vinyl flooring.

Bathroom

Comprising a large rectangular shower with thermostatic shower, free-standing bath with mixer taps and hand shower attachment, WC, wash basin, radiator, tiled walls and flooring. Window to the rear.





Landing

Doors to each bedroom and fitted carpet to the stairs and landing.

Bedroom 1

13' 2" x 10' 6" (4.01m x 3.19m)

Window to the front, fitted open-fronted wardrobes, built-in storage cupboard with loft access, radiator and laminate wood flooring.

Bedroom 2

8' 11" x 7' 6" (2.72m x 2.29m)

Window to the rear, radiator and laminate wood flooring.

Bedroom 3

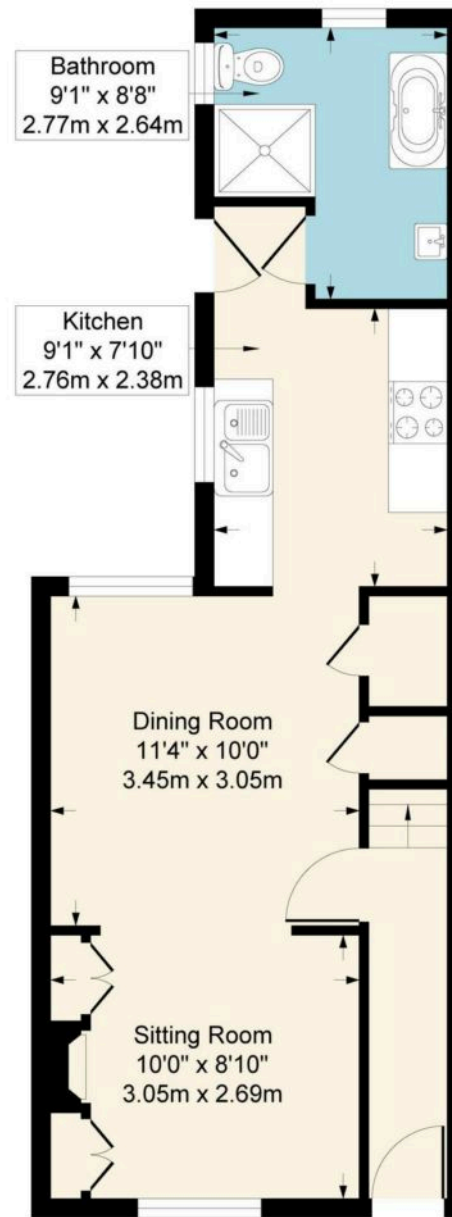
9' 5" x 8' 6" (2.87m x 2.59m)

Window to the rear, radiator and laminate wood flooring.





Approximate Gross Internal Area
764 sq ft - 71 sq m



Ground Floor



First Floor

Although every attempt has been made to ensure accuracy, all measurements are approximate.
This floorplan is for illustrative purposes only and not to scale.
Measured in accordance with RICS Standards.



Skippers Estate Agents – Ashford

5 Kings Parade High Street, Ashford – TN24 8TA

01233 632383

ashford@skippers-ea.co.uk

skippers-ea.co.uk



