



7 Breadlands Road, Willesborough  
£300,000



## 7 Breadlands Road

Willesborough, Ashford

Well-proportioned three-bedroom home in Willesborough. Off street parking, three bedrooms and generous size garden

Council Tax band: B

Tenure: Freehold

- Willesborough
- Three bedrooms
- Off street parking
- Generous garden with a brick built shed
- Guest cloakroom





### Hallway

Tiled flooring, under stair storage, radiator. Guest cloakroom, stairs first floor accommodation.

### Lounge

16' 9" x 11' 10" (5.10m x 3.60m)

Windows to the front and French doors to the rear. Fitted carpet and radiator.

### Kitchen

13' 1" x 10' 10" (3.99m x 3.30m)

Tiled flooring. Matching wall and base units. Granite effect work surfaces. Electric oven and hob. French doors leading to the garden. Window to the garden. Part tiled walls.

### Bedroom One

14' 9" x 9' 2" (4.50m x 2.80m)

Fitted carpet, radiator, window to the rear.

### Bathroom

8' 6" x 6' 3" (2.60m x 1.90m)

Part tiled bathroom. Low level wc, hand basin. Separate bath and shower. Obscured window to the front.

### Bedroom Two

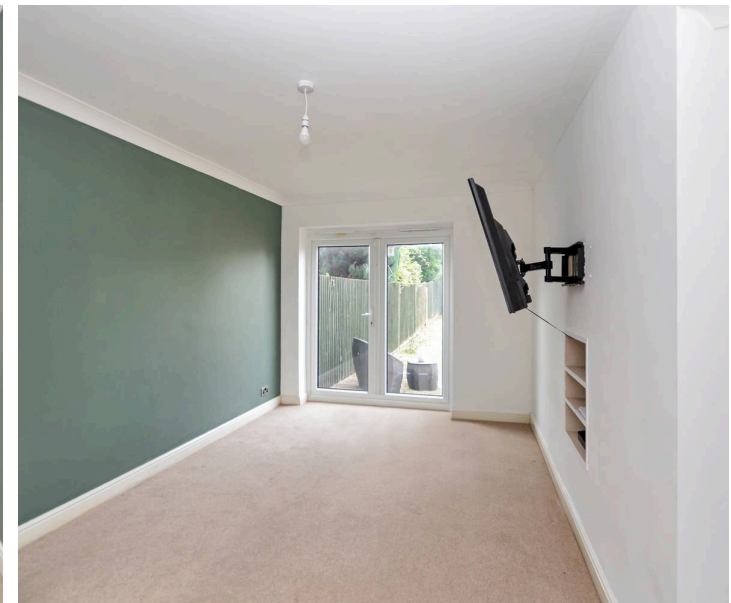
12' 6" x 10' 6" (3.80m x 3.20m)

Fitted carpet, radiator, window to the rear. Inbuilt wardrobe

### Bedroom Three

9' 2" x 7' 7" (2.80m x 2.30m)

Fitted carpet, radiator. Window to the front.







### Hallway

Tiled flooring, under stair storage, radiator. Guest cloakroom, stairs first floor accommodation.

### Lounge

16' 9" x 11' 10" (5.10m x 3.60m)

Windows to the front and French doors to the rear. Fitted carpet and radiator.

### Kitchen

13' 1" x 10' 10" (3.99m x 3.30m)

Tiled flooring. Matching wall and base units. Granite effect work surfaces. Electric oven and hob. French doors leading to the garden. Window to the garden. Part tiled walls.

### Bedroom One

14' 9" x 9' 2" (4.50m x 2.80m)

Fitted carpet, radiator, window to the rear.

### Bathroom

8' 6" x 6' 3" (2.60m x 1.90m)

Part tiled bathroom. Low level wc, hand basin. Separate bath and shower. Obscured window to the front.

### Bedroom Two

12' 6" x 10' 6" (3.80m x 3.20m)

Fitted carpet, radiator, window to the rear. Inbuilt wardrobe

### Bedroom Three

9' 2" x 7' 7" (2.80m x 2.30m)

Fitted carpet, radiator. Window to the front.





## Ground Floor

Approx. 39.3 sq. metres (422.5 sq. feet)



## First Floor

Approx. 38.0 sq. metres (408.2 sq. feet)



Whilst every attempt has been made to ensure the accuracy of the floor plan contained here, measurements of doors, windows, rooms and any other items are approximate and no responsibility is taken for any error, omission or mis-statement. This plan is for illustrative purposes only and should be used as such by and prospective purchaser.

Plan produced using PlanUp.





## Skippers Estate Agents – Ashford

5 Kings Parade High Street, Ashford – TN24 8TA

01233 632383

[ashford@skippers-ea.co.uk](mailto:ashford@skippers-ea.co.uk)

[skippers-ea.co.uk](http://skippers-ea.co.uk)

Skippers



