



9 Richard Hillary Close, Ashford
£160,000

9 Richard Hillary Close

Ashford, Ashford

Stylish two-bed apartment with feature fireplace, modern kitchen, en-suite, and bathroom. Secure entry, well-presented throughout, ideal for comfortable living.
Council Tax band: B

Tenure: Leasehold

- Two Bedroom Modern Apartment
- En-suite Bathroom
- Located in the popular area of Willesborough
- Local shops, parks & Designer Outlet nearby
- Close to Ashford train station and high speed line to London
- Close to M20 (Junction 10/10a) for easy commuting



Hallway

Step inside this well-presented apartment and you'll immediately notice the attractive wood-effect flooring, which adds warmth and style throughout the hallway and living areas. A secure entry phone system offers peace of mind and convenient access for visitors. From the hallway, doors lead off to the various rooms, creating a practical and well-proportioned layout ideal for modern living.

Sitting Room

16' 9" x 18' 5" (5.11m x 5.61m)

The high quality flooring continues into the lounge, creating a cohesive and stylish living space. A double-aspect window allows for plenty of natural light. A charming feature fireplace adds a focal point to the room, while a doorway leads conveniently through to the kitchen.

Kitchen

8' 4" x 7' 9" (2.54m x 2.36m)

The kitchen is both stylish and functional, featuring striking black-and-white chequered vinyl flooring for a classic, retro-inspired touch. A window to the front brings in natural light, complementing the decorative glass-fronted wall units that add both charm and storage. Wooden work surfaces offer warmth and contrast, while an electric oven and hob provide everyday convenience. There's space and plumbing for a washing machine, and the sink with mixer tap sits beneath part-tiled walls adorned with distinctive Moorish-style tiling—adding a unique splash of character to the space.

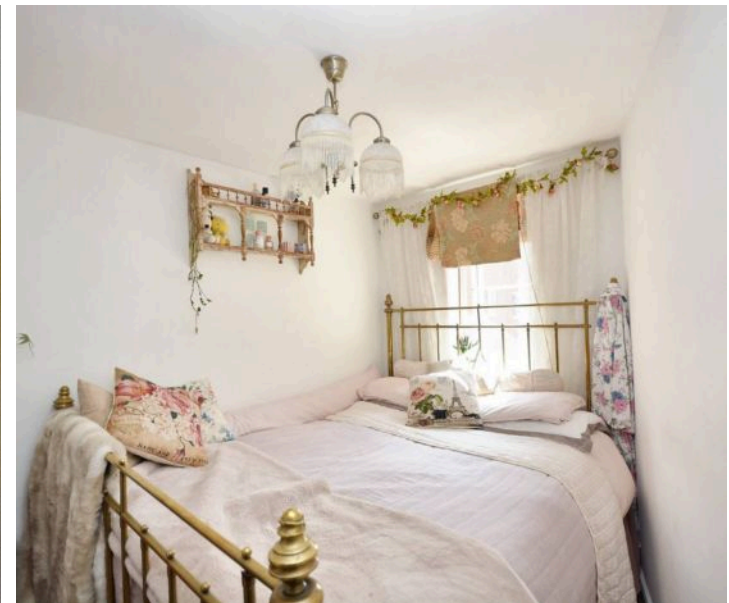
Bedroom One

8' 8" x 7' 9" (2.64m x 2.36m)

This room benefits from attractive wood-effect flooring and a window to the rear. An electric heating. Door leading through to the en-suite.

En-suite

The en-suite is tastefully finished with classic Georgian-style wall panelling, adding a touch of elegance to the space. It includes a low-level WC, a hand basin, and a walk-in shower. Vinyl flooring.

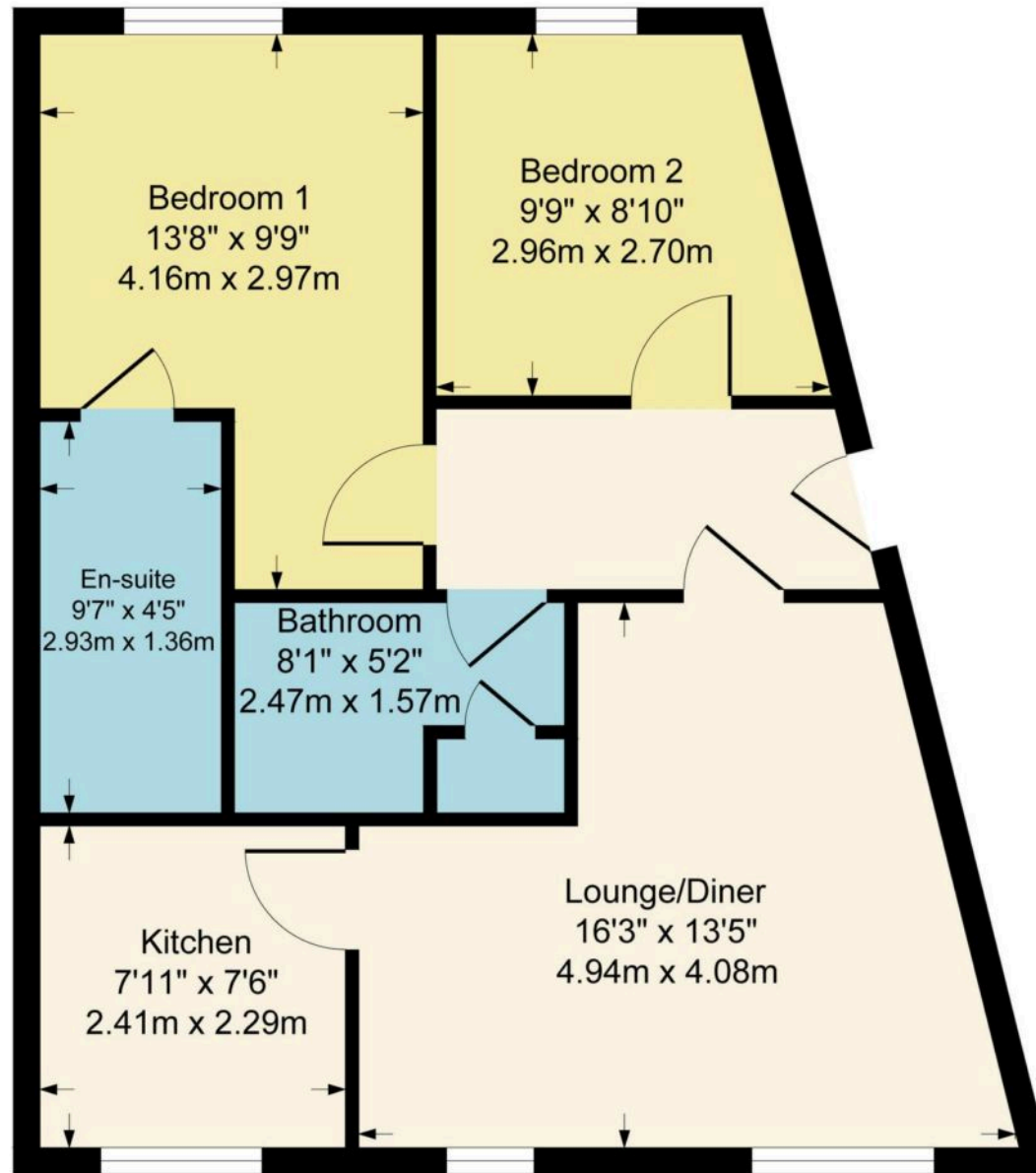








Approximate Gross Internal Area
560 sq ft - 52 sq m



Although every attempt has been made to ensure accuracy, all measurements are approximate.
This floorplan is for illustrative purposes only and not to scale.
Measured in accordance with RICS Standards.



Skippers Estate Agents – Ashford

5 Kings Parade High Street, Ashford – TN24 8TA

01233 632383

ashford@skippers-ea.co.uk

skippers-ea.co.uk

Skippers

