



14 Yew Tree Park Homes, Charing
£200,000

14 Yew Tree Park Homes

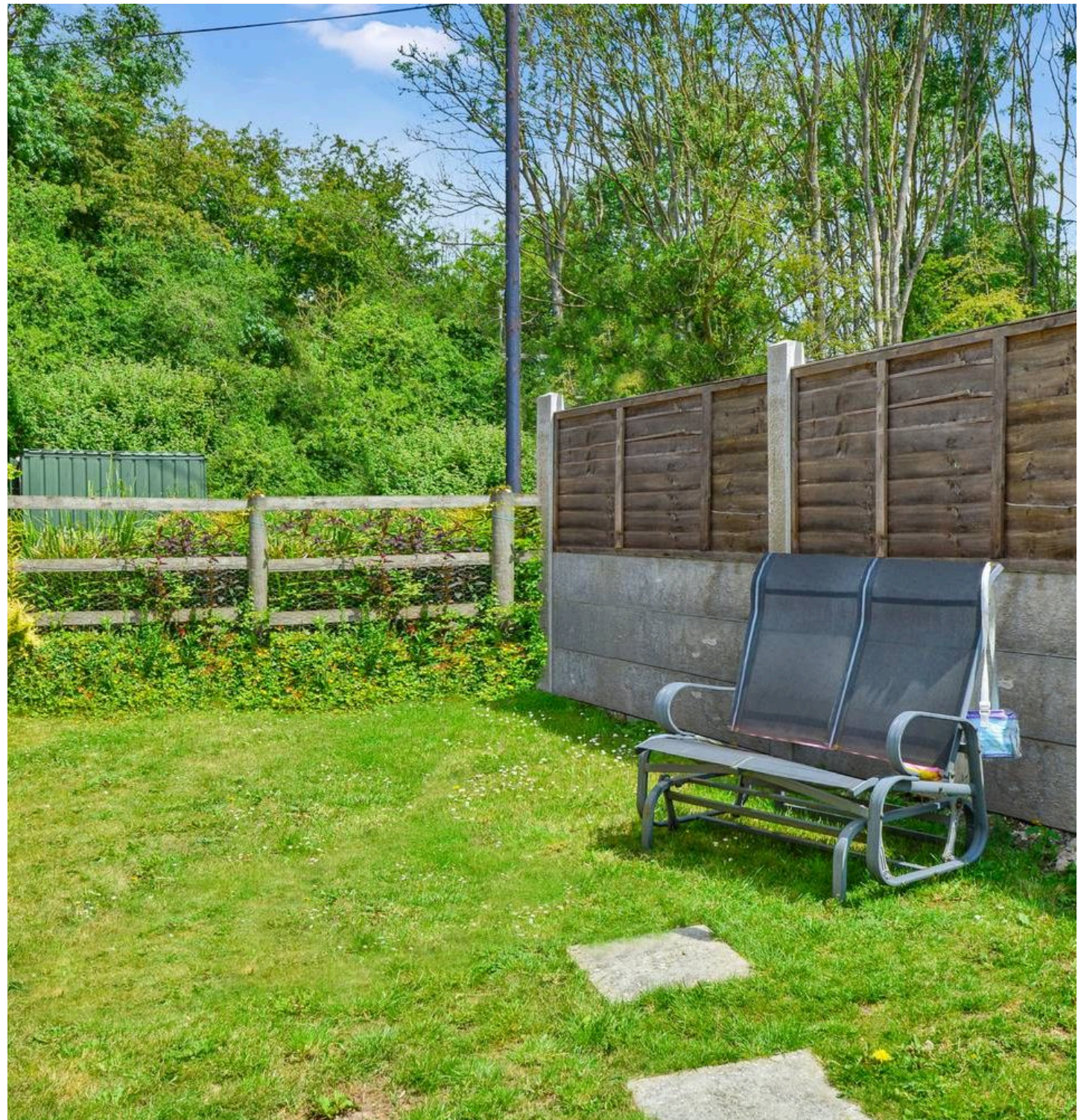
Charing, Ashford

This delightful two-bedroom home offers light-filled living spaces, well-proportioned rooms, and a layout that balances character with comfort.

Council Tax band: A

Tenure: Leasehold

- Peaceful park home setting in a well-kept, semi-rural development
- Two Bedroom Park Home
- En-suite bedroom
- Dining Room
- Garden



Lounge

14' 0" x 10' 8" (4.27m x 3.26m)

Bright open lounge benefitting from a large bay window and two additional windows. Feature coal effect fire. Radiators.

Dining Room

9' 6" x 6' 8" (2.90m x 2.02m)

Separate dining room to open plan lounge. Window to the side.

Kitchen

10' 7" x 9' 2" (3.22m x 2.80m)

Stone effect vinyl flooring. Matching wall and base units, stainless steel sink with mixer taps, space and plumbing for washing machine. Breakfast bar. Windows overlooking garden in addition to the rear door.

Bathroom

8' 5" x 6' 3" (2.57m x 1.90m)

Roll top bath, low level w.c and hand basin. Obscured glass window to rear.

Bedroom One

9' 2" x 8' 10" (2.80m x 2.70m)

Spacious bedroom with fitted carpet, window overlooking garden. Door to walk in wardrobe, door to En-suite

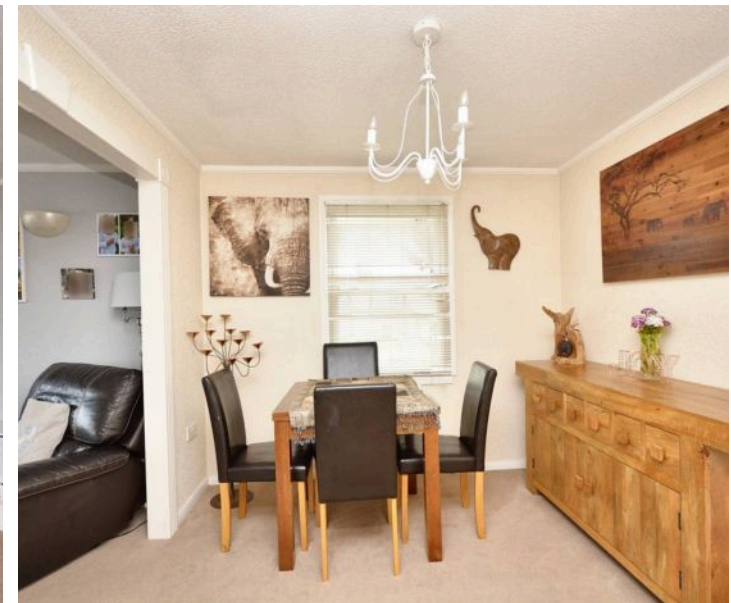
En-suite

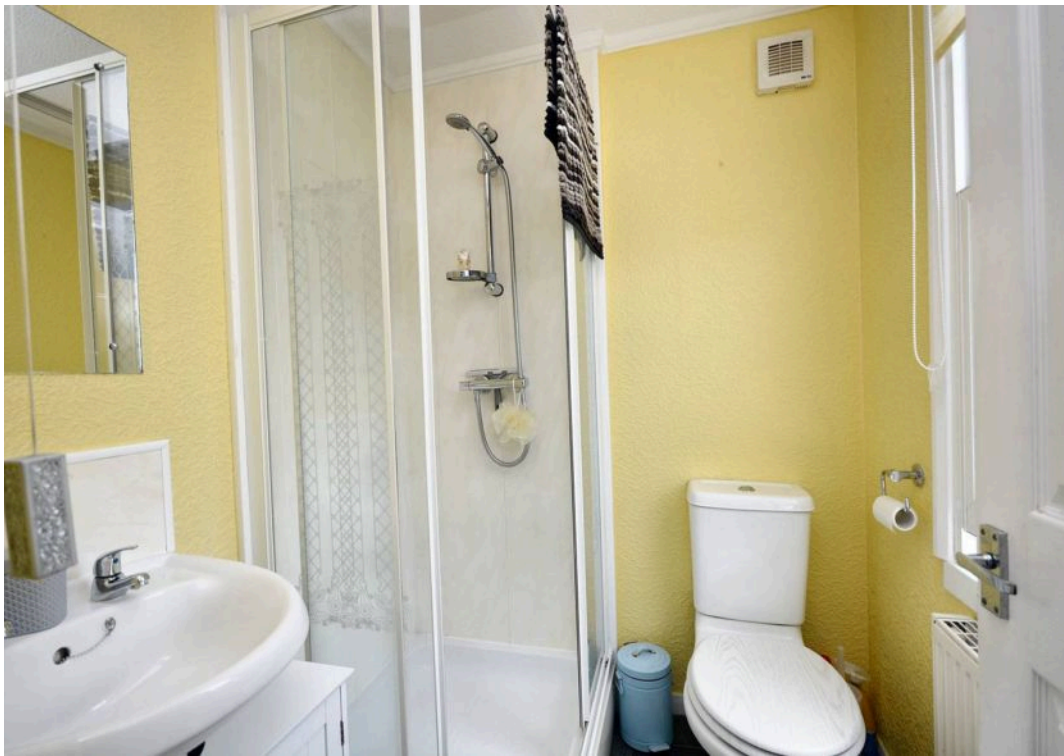
Shower. Low level wc, wash basin. Window to side.

Bedroom Two

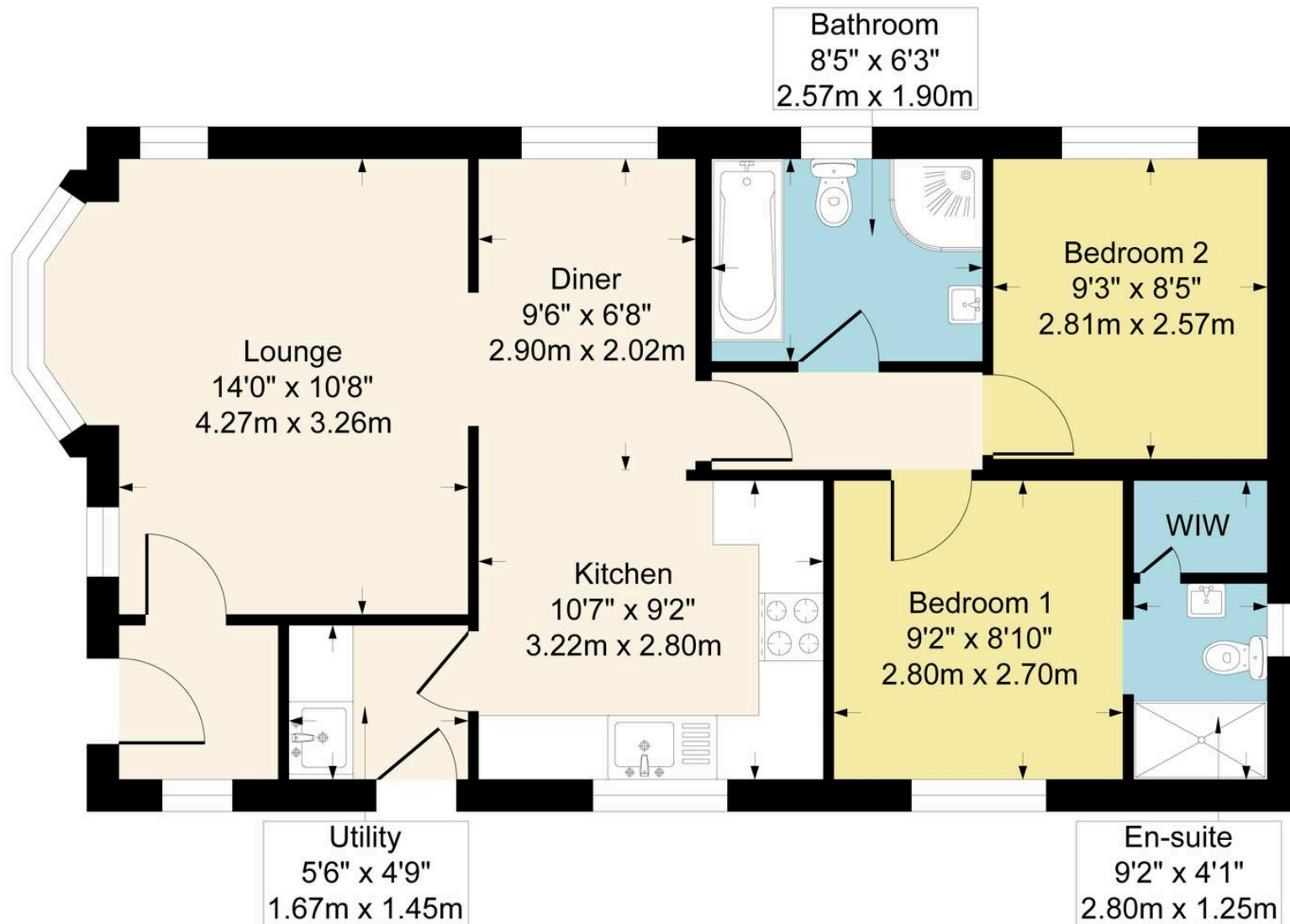
9' 2" x 8' 10" (2.80m x 2.70m)

Ideal second bedroom, play room, office. Flexible area with fitted carpet. Window to the rear.





Approximate Gross Internal Area
683 sq ft - 63 sq m



Although every attempt has been made to ensure accuracy, all measurements are approximate.
This floorplan is for illustrative purposes only and not to scale.
Measured in accordance with RICS Standards.



Skippers Estate Agents – Ashford

5 Kings Parade High Street, Ashford – TN24 8TA

01233 632383

ashford@skippers-ea.co.uk

skippers-ea.co.uk

Skippers

