



Hadley Cottage The Street, Smarden

Offers in Region of £450,000

Skippers

Hadley Cottage The Street

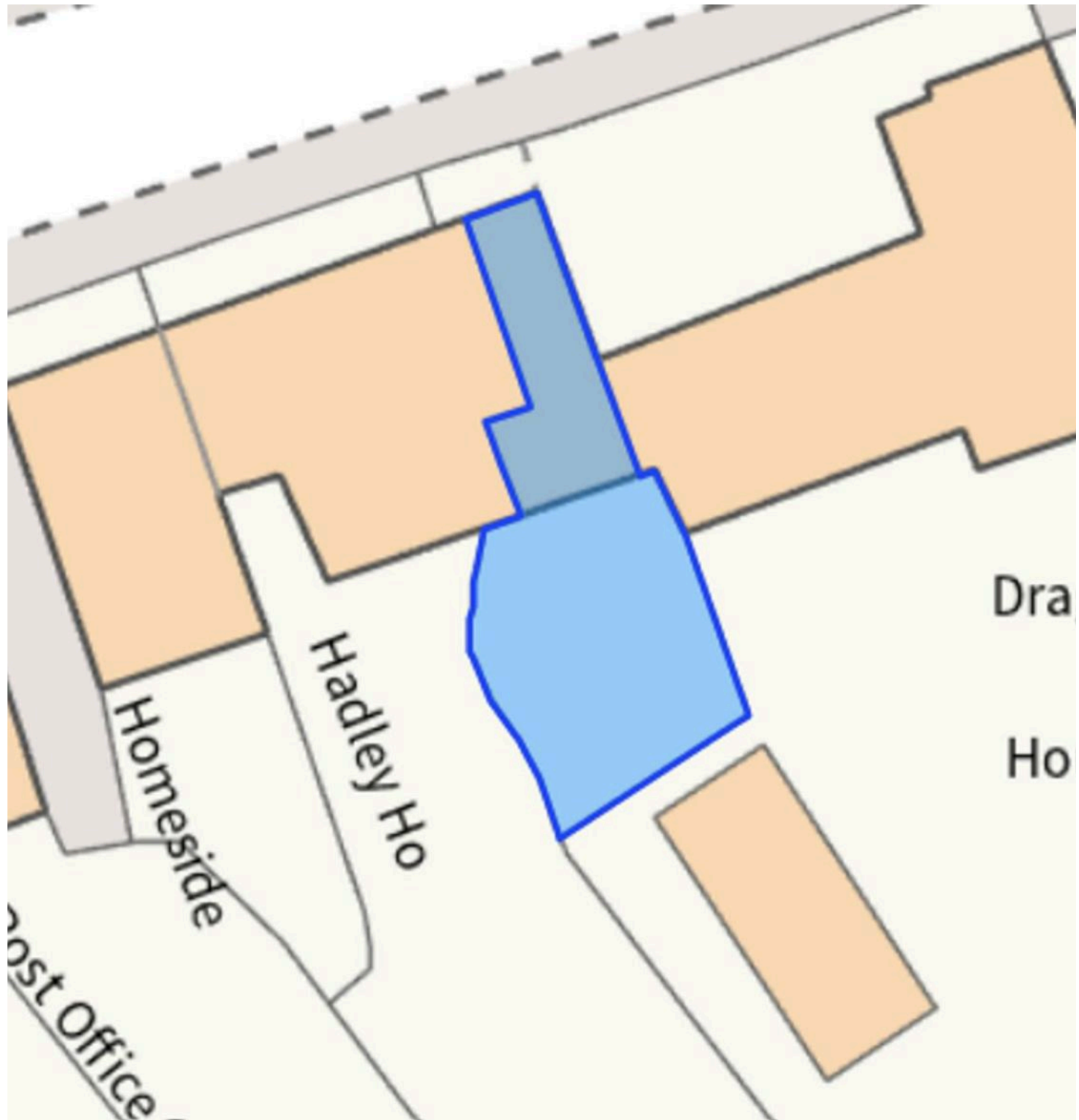
Smarden, Ashford

Charming Grade II listed cottage in Smarden village with 3 bedrooms, modern kitchen, cosy lounge with fireplace, private garden, gas heating, and no onward chain. Enjoy historic charm with modern comforts.

Council Tax band: E

Tenure: Freehold

- NO ONWARD CHAIN
- Grade II listed Character Cottage
- Three Double Bedrooms
- Smarden Village Location
- Lovely Matured Private Cottage Gardens
- Lounge with Inglenook Fireplace
- Modern Kitchen/Diner
- Family Bathroom with White Suite
- Gas Fired Central Heating



Sitting Room

14' 3" x 11' 9" (4.34m x 3.58m)

With exposed beams, inglenook fireplace and double aspect windows to front and side.

Inner hallway

With stairs to front floor, coat storage and door through to kitchen/diner.

Kitchen/Dining Room

15' 4" x 11' 8" (4.67m x 3.56m)

Good range of cupboards and drawers beneath worksurfaces and additional wall mounted units, ceramic sink with mixer tap and drainer, space and plumbing for washing machine and dishwasher, windows and door out to rear garden, inset spotlights, integrated cooker with gas hob over and extractor over, AGA range cooker (not tested or currently in use).

Landing

Window to side, doors leading through to 2 bedrooms and family bathroom and stairs leading to master bedroom.

Bedroom

10' 9" x 10' 5" (3.28m x 3.18m)

Exposed beams with window outlook to front.

Bedroom

11' 11" x 10' 3" (3.63m x 3.12m)

Window outlook over rear garden and exposed brick fireplace.

Family Bathroom

White three piece bathroom suite with window outlook to rear and locally tiled walls.

Bedroom

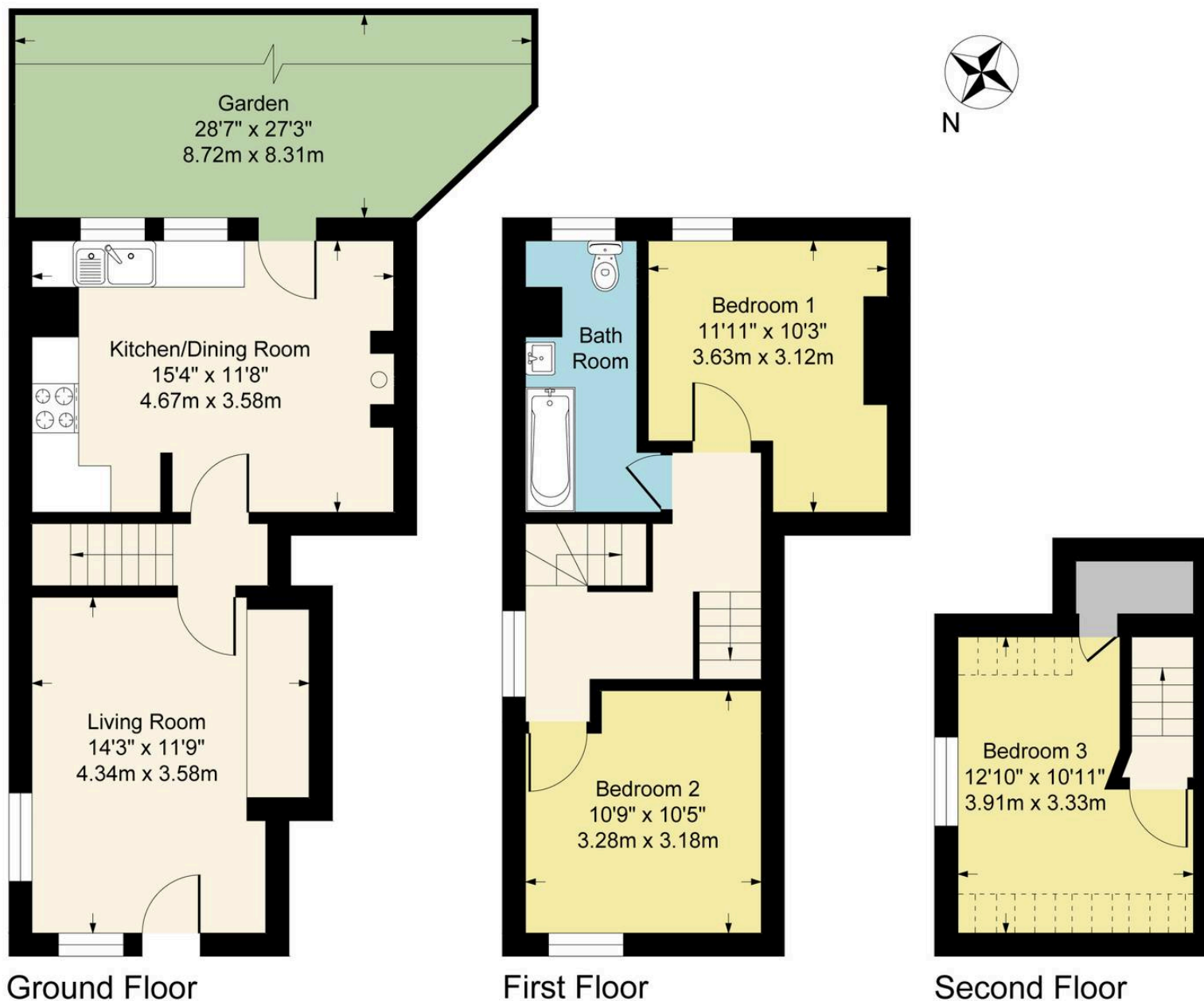
12' 10" x 10' 11" (3.91m x 3.33m)

Exposed beams, window to side and built in storage cupboard.





**Approximate Gross Internal Area
913 sq ft - 85 sq m**



Although every attempt has been made to ensure accuracy, all measurements are approximate.
This floorplan is for illustrative purposes only and not to scale.
Measured in accordance with RICS Standards.



Skippers Estate Agents – Ashford

5 Kings Parade High Street, Ashford – TN24 8TA

01233 632383

ashford@skippers-ea.co.uk

skippers-ea.co.uk

Skippers

