



11 Bale Place, Kingsnorth  
£90,500



# 11 Bale Place

Kingsnorth, Ashford

Modern 3-bed detached house in Bridgefields, Kingsnorth. Built in 2022, part-ownership offering, spacious living area, en-suite master bedroom, carport, garden with shed. Ideal family home in sought-after location with no onward chain.

Schedule a viewing today!

Council Tax band: D

Tenure: Leasehold

- NO ONWARD CHAIN
- 25% PART OWNERSHIP OF SHARED OWNERSHIP PROPERTY
- Detached Family Home
- 3 Bedrooms
- Carport with Driveway Parking
- En-suite to Master Bedroom, Family Bathroom & Cloakroom
- Lounge/Diner
- Enclosed Rear Garden
- Built in 2023
- Popular Bridgefields Location within Kingsnorth



**Hallway**

With stairs leading to first floor

**Cloakroom**

Low level wc, pedestal wash hand basin with obscured window to front.

**Kitchen**

10' 6" x 6' 8" (3.20m x 2.03m)

Range of beech fronted cupboards and drawers beneath work surfaces with additional wall mounted units, window to front, cupboard housing wall mounted boiler for hot water and heating, integrated fridge/freezer, space and plumbing for washing machine, 4 ring gas hob with splashback and extractor over and low level oven.

**Lounge/Diner**

17' 5" x 16' 8" (5.31m x 5.08m)

Carpeted with window and double patio doors to rear and large understairs cupboard.

**Landing**





### **Bedroom**

13' 8" x 13' 3" (4.17m x 4.04m)

Carpeted with window to front, wall mounted panels, double built in wardrobe and further single storage cupboard/airing cupboard.

### **En-suite**

White suite comprising low level wc, pedestal wash hand basin, tiled shower cubicle, obscured window to front, locally tiled walls.

### **Bedroom**

9' 11" x 9' 3" (3.02m x 2.82m)

Carpeted with window to rear.

### **Bedroom**

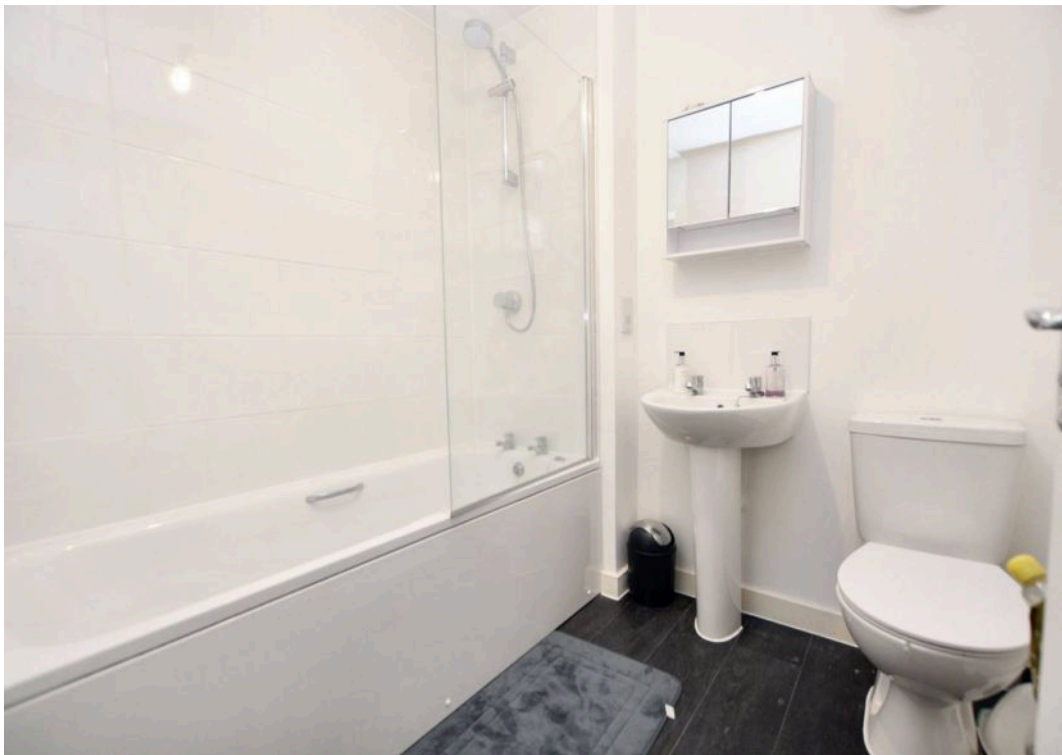
9' 11" x 7' 1" (3.02m x 2.16m)

Carpeted with window to rear.

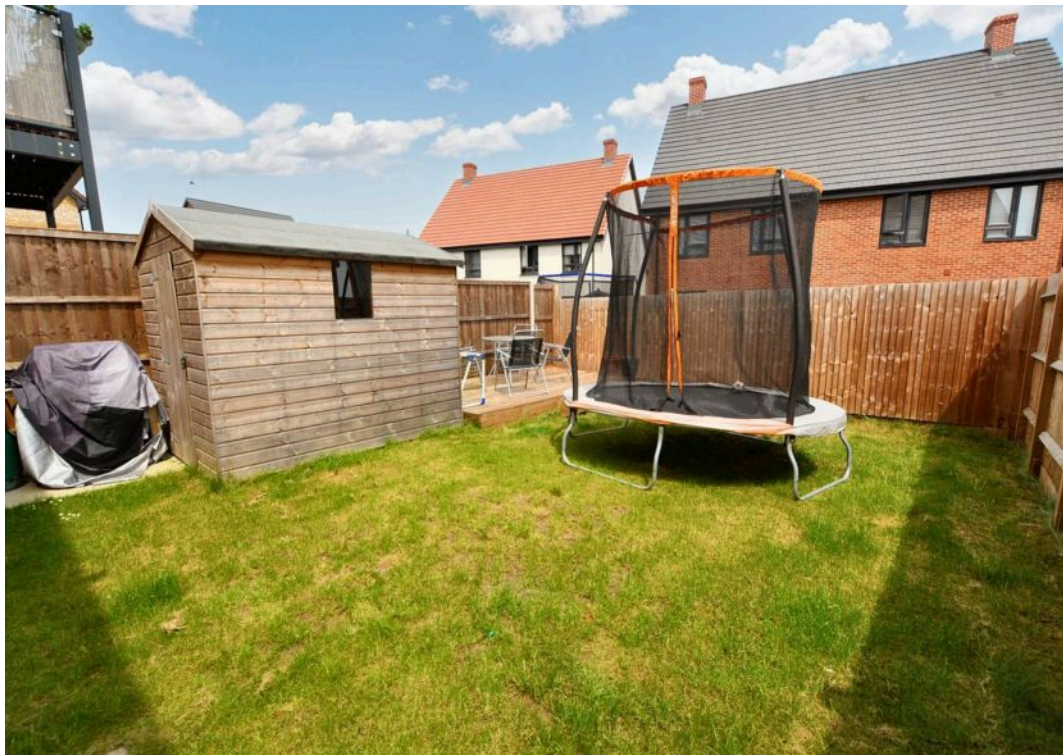
### **Family Bathroom**

White suite comprising low level wc, pedestal wash hand basin, panelled bath with shower screen and shower over, locally tiled walls.





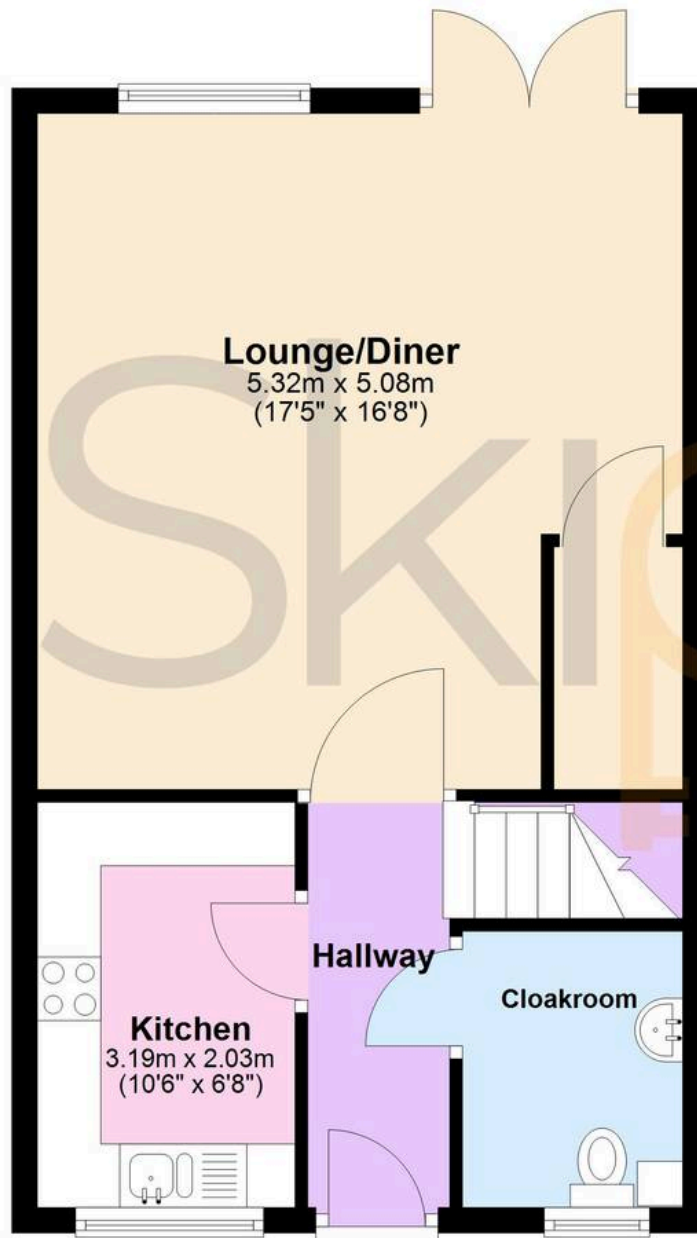






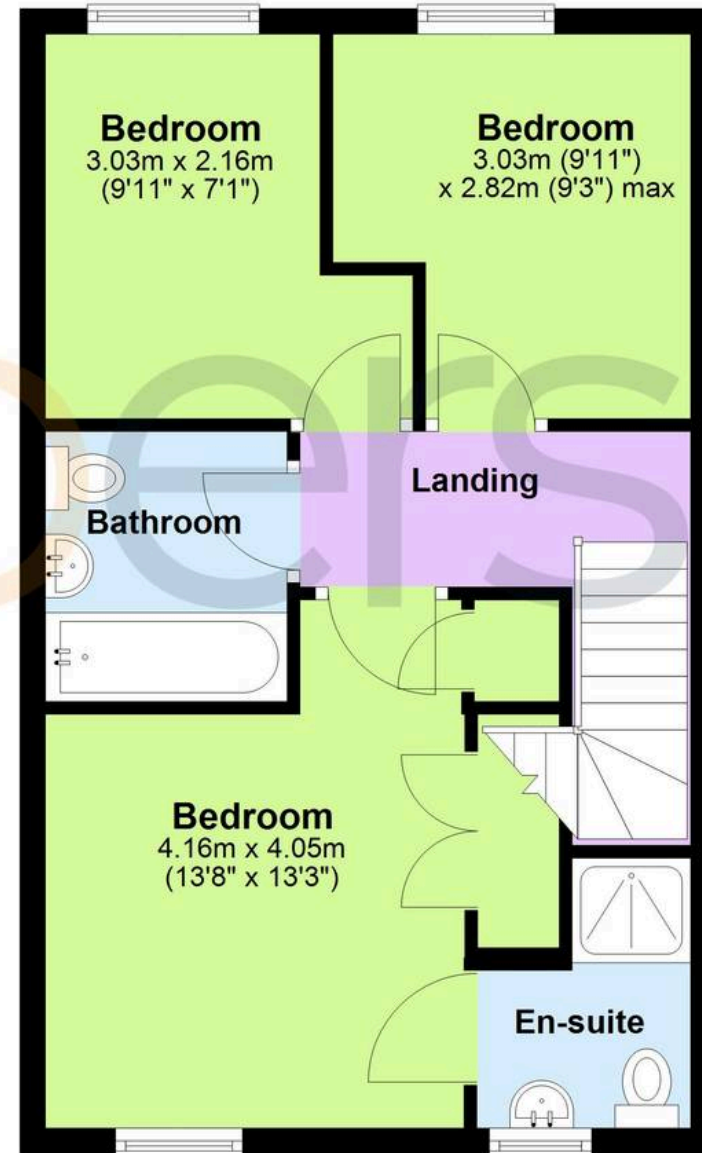
## Ground Floor

Approx. 43.7 sq. metres (470.8 sq. feet)



## First Floor

Approx. 43.7 sq. metres (470.8 sq. feet)



Total area: approx. 87.5 sq. metres (941.6 sq. feet)





## Skippers Estate Agents – Ashford

5 Kings Parade High Street, Ashford – TN24 8TA

01233 632383

[ashford@skippers-ea.co.uk](mailto:ashford@skippers-ea.co.uk)

[skippers-ea.co.uk](http://skippers-ea.co.uk)





