



Boundary Road, Hythe
£425,000

Plot 72 Burmarsh, Boundary Road

Hythe

Council Tax band: TBD

Tenure: Freehold

- Brand New Three Bedroom Home
- Master Bedroom with Ensuite
- Accommodation over Three Floors
- Parking
- Available to Reserve Today
- Close to Beach & Town Centre
- All Flooring Included
- Fully Fitted Integrated Kitchen
- 10 Year Build Warranty
- Assisted Move



Boundary Road

Located in the sought after area of Hythe, Sutherland Park is conveniently located for access to both the beach and the Town Centre.

The Burmarsh is an energy efficient home that is designed with both comfort and style in mind, with a fully integrated kitchen, heating served by an air source heat pump and stylish bathrooms, as well as flooring throughout

The accommodation is set over three floors, so to the ground floor there is a cloakroom, a fully integrated kitchen leading to the living dining room. The first floor has two bedrooms and family bathroom, with the master bedroom and ensuite on the 2nd floor.

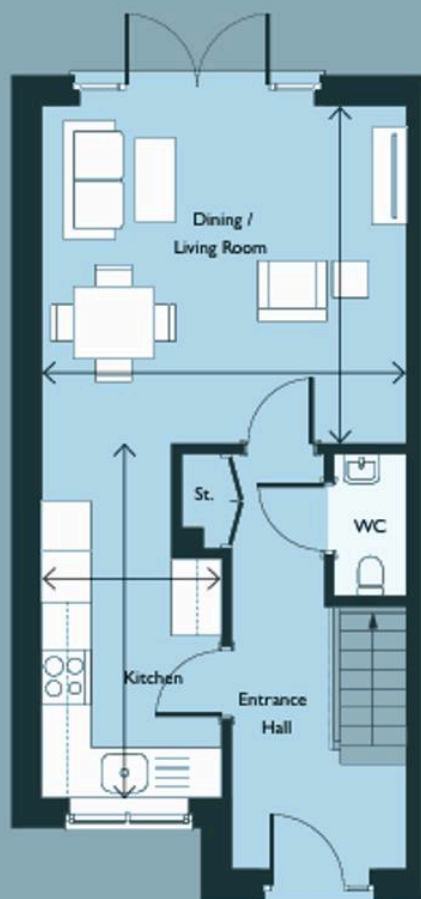
Available to reserve today and with assisted move please contact us to book your viewing at the Marketing Suite.





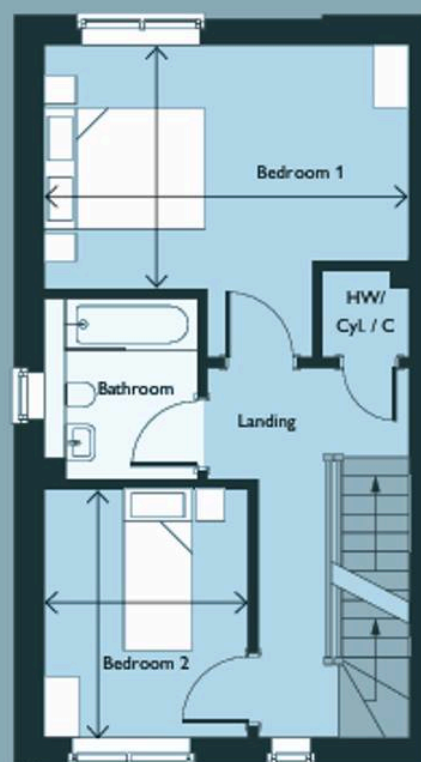






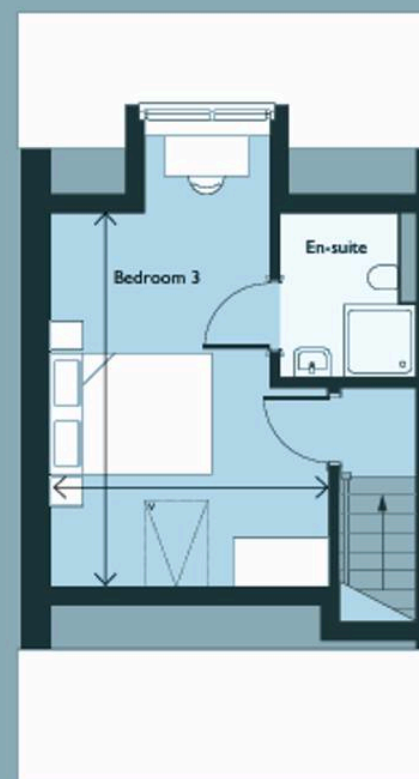
GROUND FLOOR

Kitchen	2.24m x 4.39m 7'4" x 14'4"
Dining/Living Room	4.53m x 4.20m 14'10" x 13'9"
WC	0.90m x 1.77m 2'11" x 5'9"



FIRST FLOOR

Bedroom 1	4.53m x 3.03m 14'10" x 9'11"
Bedroom 2	2.54m x 3.88m 8'3" x 12'7"
Bathroom	1.91m x 2.24m 6'3" x 7'4"



SECOND FLOOR

Bedroom 3	3.46m x 5.81m 11'4" x 19'0"
En-suite	1.69m x 2.04m 5'6" x 6'8"