



Romney Sand Holiday Village, The Parade

New Romney

Offers in excess of **£37,000**



Romney Sand Holiday Village

The Parade, New Romney

Charming 2-bed detached chalet in sought-after holiday village, renovated with seaside living in mind. Short stroll to beach, ample parking, discounts & passes included. Ideal coastal retreat for year-round relaxation and exploration.

Council Tax band: A

Tenure: Leasehold

- Detached holiday chalet
- Two bedrooms
- Recently renovated
- Located on a fantastic holiday village
- Lease expires 2050
- Just a short stroll from the beach
- Park is open eleven months of the year.
- Discounts and passes included to use in the village.
- Plenty of parking close by.



Open plan living space.
16' 11" x 13' 6" (5.16m x 4.12m)

Bedroom
6' 9" x 9' 3" (2.05m x 2.81m)

Bedroom
9' 1" x 9' 3" (2.78m x 2.81m)

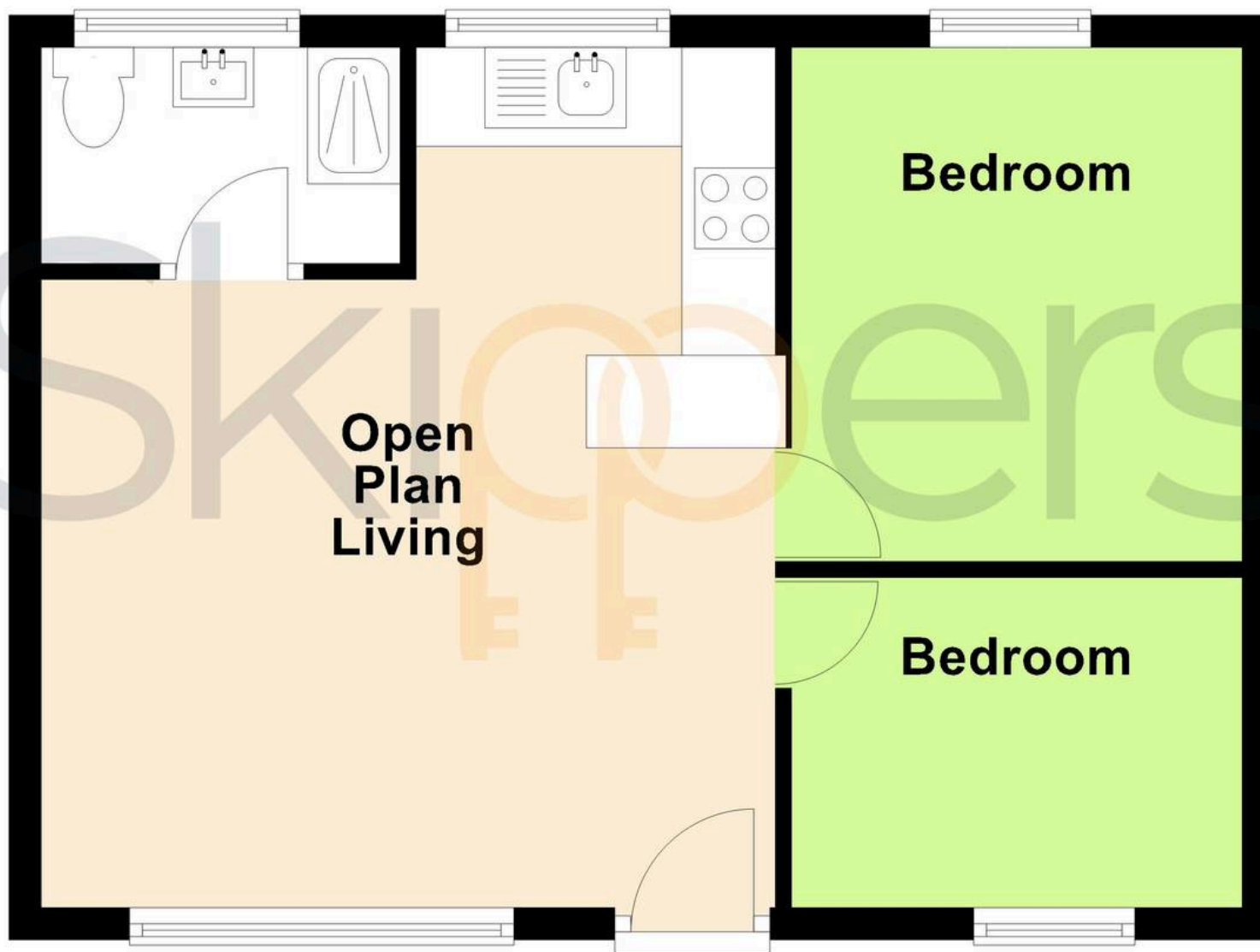
Shower room





Ground Floor

Approx. 39.7 sq. metres (427.8 sq. feet)



Total area: approx. 39.7 sq. metres (427.8 sq. feet)



Skippers Estate Agents – New Romney

Andrew & Co, 55 High Street – TN28 8AH

01797 362898

newromney@skippers-ea.co.uk

skippers-ea.co.uk

Skippers