



23 Pippin Close, New Romney

New Romney

£525,000



23 Pippin Close

New Romney, New Romney

Exquisite 4-bed semi-detached home in sought-after cul-de-sac with stunning countryside views. Spacious interiors, mature garden, garage, and driveway. Ideal blend of tranquillity and accessibility near New Romney Highstreet.

Council Tax band: D

Tenure: Freehold

- Stunning countryside views.
- Beautiful spacious home
- Located close to New Romney Highstreet
- Accommodation over three floors
- Peaceful cul-de-sac location
- Two reception rooms
- Four bedrooms
- Garage and driveway



Entrance Hall

Spacious and inviting

Office/Bedroom five

12' 5" x 12' 2" (3.78m x 3.70m)

The heart of the home with field views.

WC

Kitchen/family room

17' 9" x 17' 1" (5.40m x 5.20m)

Landing

Bedroom

9' 9" x 17' 4" (2.98m x 5.28m)

En suite shower room

Lounge

17' 9" x 17' 4" (5.40m x 5.29m)

Spacious with a Juliet balcony

Landing

Bedroom

9' 9" x 7' 11" (2.98m x 2.41m)

Bedroom

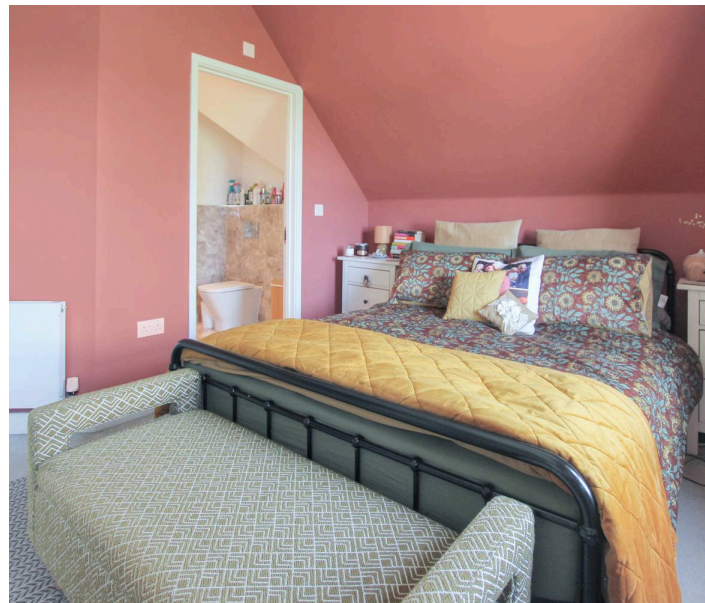
12' 7" x 9' 1" (3.84m x 2.76m)

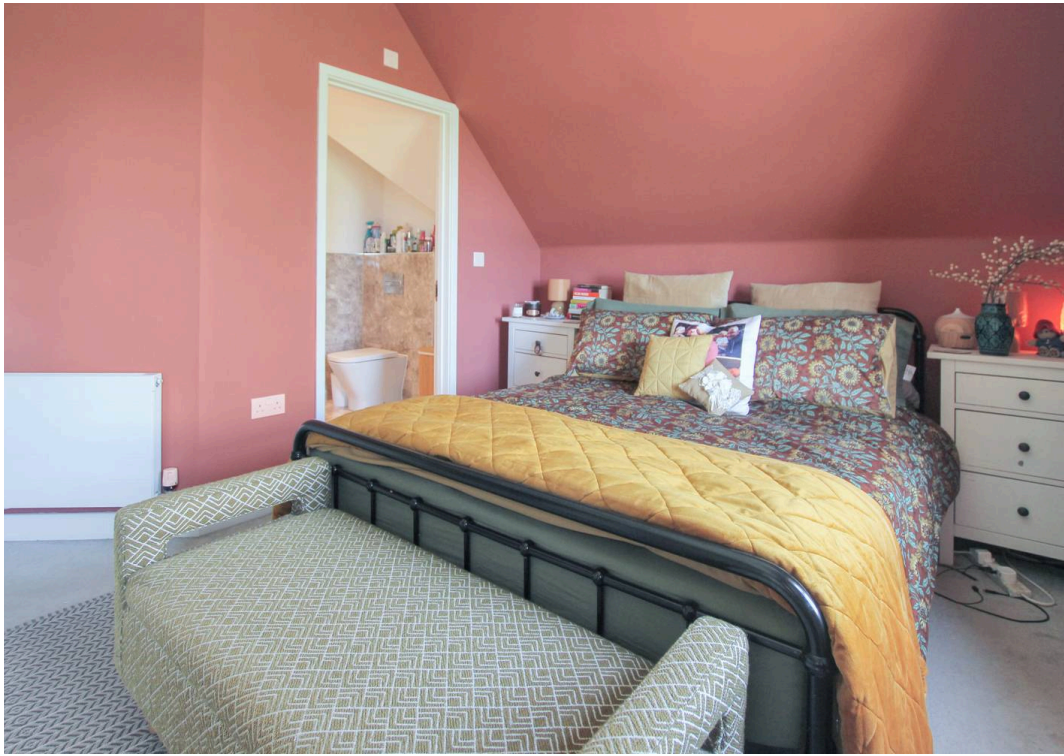
Master bedroom

14' 10" x 17' 5" (4.51m x 5.30m)

Countryside views

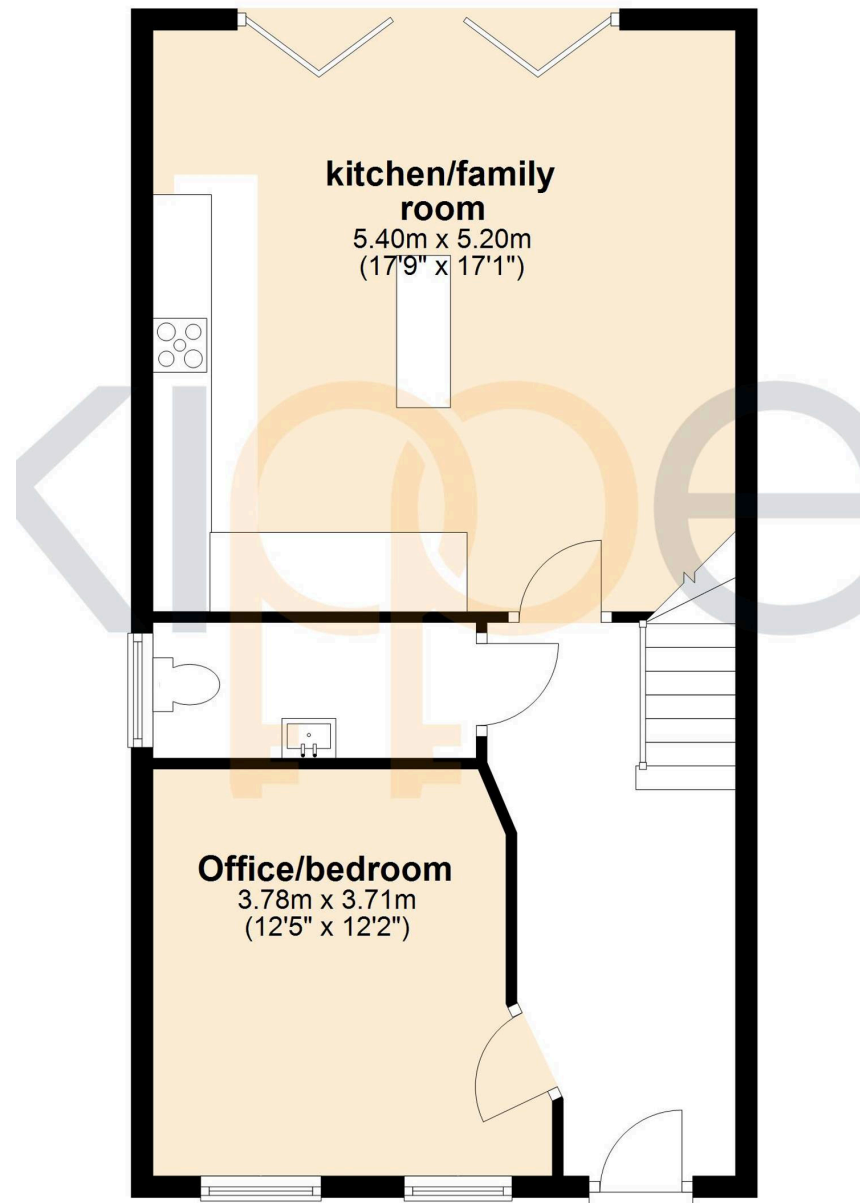
En suite shower room





Ground Floor

Approx. 56.7 sq. metres (610.1 sq. feet)



Total area: approx. 173.0 sq. metres (1862.6 sq. feet)



Skippers Estate Agents – New Romney

Andrew & Co, 55 High Street – TN28 8AH

01797 362898

newromney@skippers-ea.co.uk

skippers-ea.co.uk

Skippers