



1 Meadow Road, Ashford

Guide Price **£500,000**

Skippers

1 Meadow Road

Ashford, Ashford

This spacious and well-maintained four-bedroom link detached home offers versatile living across two floors, ideal for a growing family or those seeking extra space to work from home.

Council Tax band: D

Tenure: Freehold

- Four Bedroom Link Detached
- Large Garden With Rear Access
- Hardstanding for Motorhome or Camper Van
- Dining Room
- Office Space



Hallway

Stairs leading to upstairs accommodation. Parquet flooring. Guest cloakroom. Radiator, storage. Window to the front.

Lounge

18' 10" x 11' 5" (5.74m x 3.48m)

Fitted carpet. Window to the front, radiator. French doors to the garden.

Dining Room

10' 11" x 10' 4" (3.33m x 3.15m)

Tiled flooring. Doble doors leading to the conservatory. Radiator.

Kitchen

11' 11" x 10' 5" (3.63m x 3.18m)

Tiled flooring. Matching wall and base units. Space for Gas oven and gas hob, dishwasher. Stainless steel sink with mixer tap and water filter. Window to the garden.

Conservatory

9' 6" x 9' 0" (2.90m x 2.74m)

Large conservatory connecting the dining room and leading to the garden. Tiled flooring

Utility

8' 6" x 6' 8" (2.59m x 2.03m)

Space and plumbing for washing machine and a range of white goods.

Office

10' 0" x 6' 7" (3.05m x 2.01m)

Double aspect windows. Wood effect flooring

Bedroom One

13' 0" x 11' 11" (3.96m x 3.63m)

Overlooking the garden with a window to the rear. Fitted carpet. Fitted wardrobes.

Bedroom Two

12' 6" x 11' 6" (3.81m x 3.51m)

Fitted carpet. Window to the rear, radiator

Bedroom Three





Hallway

Stairs leading to upstairs accommodation. Parquet flooring. Guest cloakroom. Radiator, storage. Window to the front.

Lounge

18' 10" x 11' 5" (5.74m x 3.48m)

Fitted carpet. Window to the front, radiator. French doors to the garden.

Dining Room

10' 11" x 10' 4" (3.33m x 3.15m)

Tiled flooring. Double doors leading to the conservatory. Radiator.

Kitchen

11' 11" x 10' 5" (3.63m x 3.18m)

Tiled flooring. Matching wall and base units. Space for Gas oven and gas hob, dishwasher. Stainless steel sink with mixer tap and water filter. Window to the garden.

Conservatory

9' 6" x 9' 0" (2.90m x 2.74m)

Large conservatory connecting the dining room and leading to the garden. Tiled flooring

Utility

8' 6" x 6' 8" (2.59m x 2.03m)

Space and plumbing for washing machine and a range of white goods.

Office

10' 0" x 6' 7" (3.05m x 2.01m)

Double aspect windows. Wood effect flooring

Bedroom One

13' 0" x 11' 11" (3.96m x 3.63m)

Overlooking the garden with a window to the rear. Fitted carpet. Fitted wardrobes.

Bedroom Two

12' 6" x 11' 6" (3.81m x 3.51m)

Fitted carpet. Window to the rear, radiator

Bedroom Three





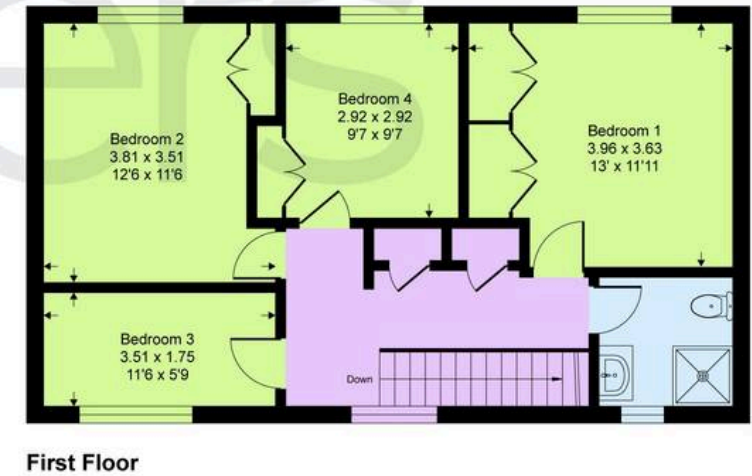
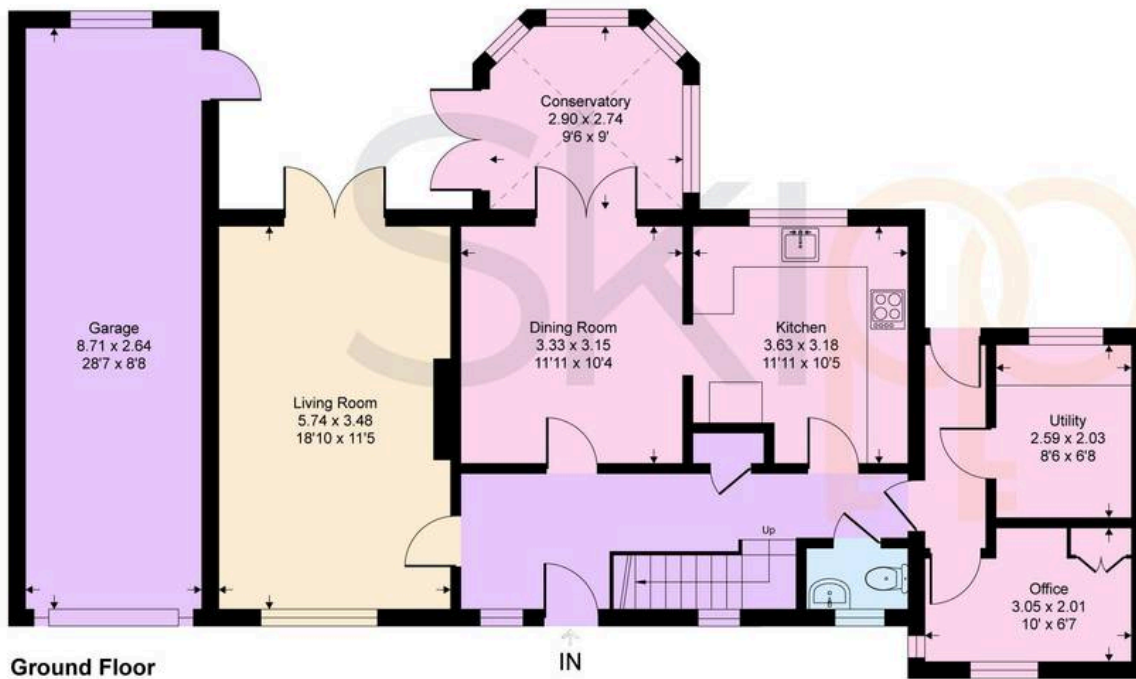


Meadow Road, TN23

Approximate Gross Internal Area = 142.6 sq m / 1535 sq ft

Approximate Garage Internal Area = 23 sq m / 248 sq ft

Approximate Total Internal Area = 165.6 sq m / 1783 sq ft



This floor plan is for representation purposes only as defined by the RICS code of Measuring Practice (and IPMS where requested) and should be used as such by any prospective purchaser. Whilst every attempt has been made to ensure the accuracy contained here, the measurement of doors, windows and rooms is approximate and no responsibility is taken for any error, omission or mis-statement. Specifically no guarantee is given on the total area of the property if quoted on the plan. Any figure provided is for guidance only and should not be used for valuation purposes.



Skippers Estate Agents – Ashford

5 Kings Parade High Street, Ashford – TN24 8TA

01233 632383

ashford@skippers-ea.co.uk

skippers-ea.co.uk



