



40 Swaffer Way, Ashford

In Excess of £300,000

Skippers

40 Swaffer Way

Ashford, Ashford

A three-bedroom end-terrace home, positioned in a nicely tucked away location with a tree-lined walkway to the front, enjoying a south-facing low maintenance garden and two allocated parking spaces. No onward chain.

Council Tax band: C

Tenure: Freehold

- 3-bedroom end terrace home
- Allocated parking for 2 cars
- Low maintenance south-facing garden
- Downstairs cloakroom/WC
- Fitted wardrobes to Bedroom 1
- Overlooking tree-lined walkway to the front
- Singleton location - close to schools and shops with regular transport links also
- No onward chain



Entrance Hallway

Part glazed composite door to the front, stairs to first-floor, radiator and laminate wood flooring.

Cloakroom

Window to the front, WC, wash basin, radiator and laminate wood flooring.

Kitchen

9' 10" x 6' 7" (2.99m x 2.01m)

Window to the front, radiator, tiled splash back and vinyl flooring. Fitted kitchen comprises matching wall and base units with work surfaces over, inset sink/drainage, built-in electric oven, 4-ring gas hob and extractor over & dishwasher. Space and plumbing for washing machine and fridge-freezer.

Lounge/Diner

15' 8" x 14' 0" (4.77m x 4.26m)

Window to rear and French doors leading to the garden, under-stairs storage cupboard, radiator and laminate wood flooring.

Landing

Doors to each room, loft access, cupboard housing hot water cylinder, carpet fitted to the stairs and landing.





Bedroom 1

9' 9" x 11' 10" (2.97m x 3.61m)

Windows to the front, built-in storage cupboard and wardrobes, radiator and fitted carpet.

Bedroom 2

7' 9" x 8' 11" (2.36m x 2.71m)

Window to the rear, radiator and fitted carpet.

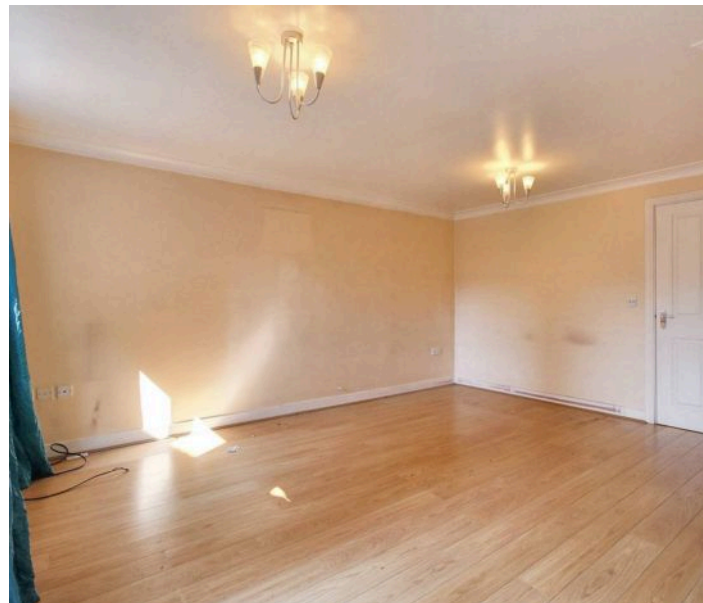
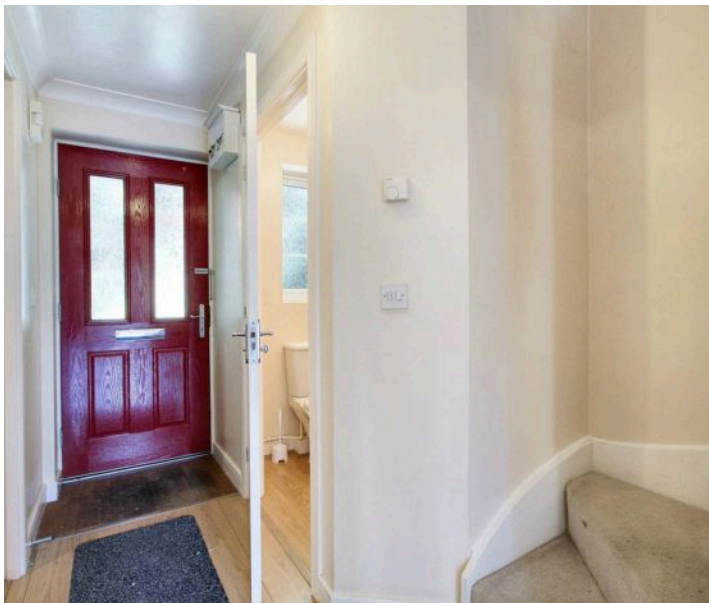
Bedroom 3

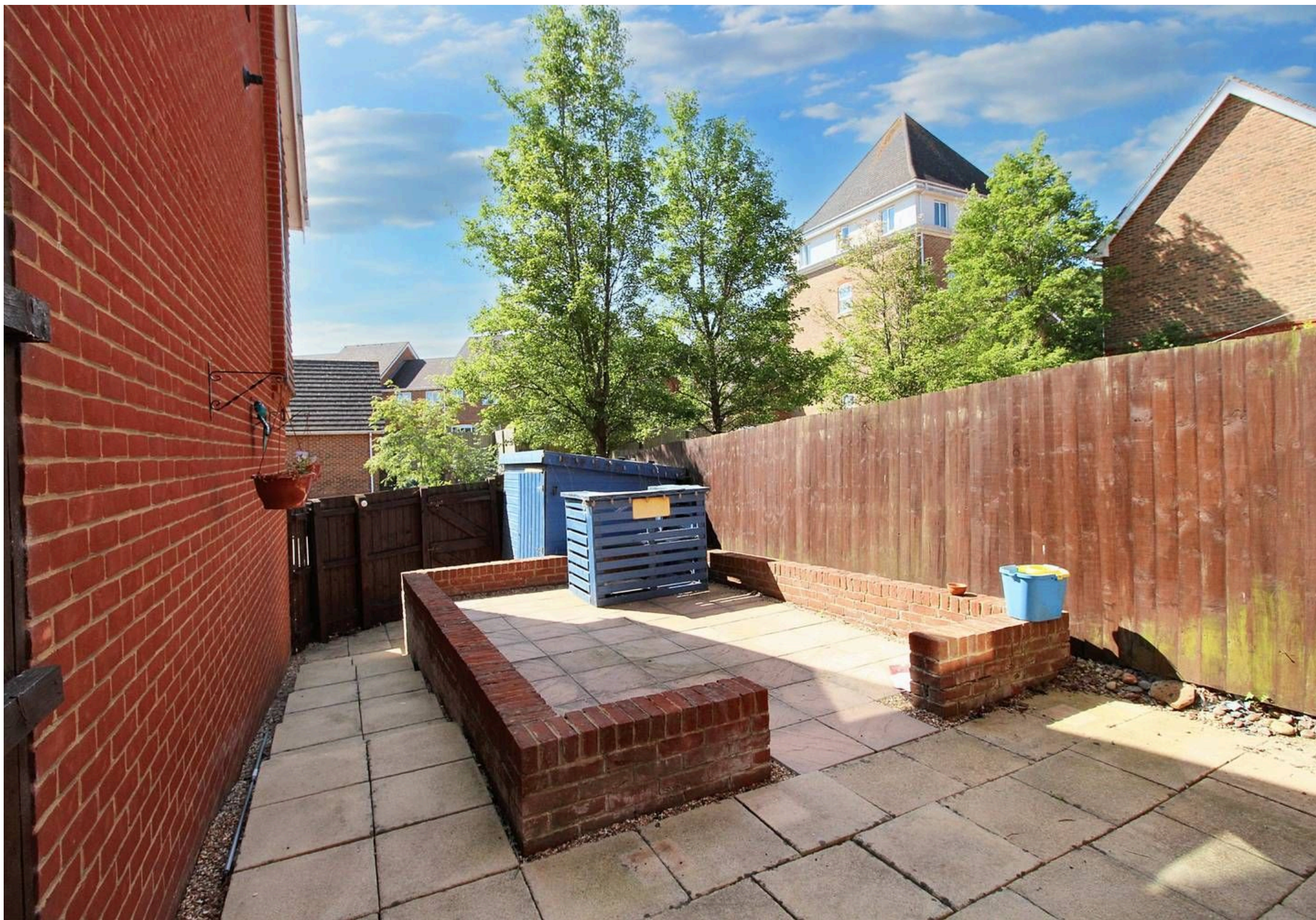
5' 11" x 8' 11" (1.81m x 2.71m)

Window to the rear, radiator and fitted carpet.

Bathroom

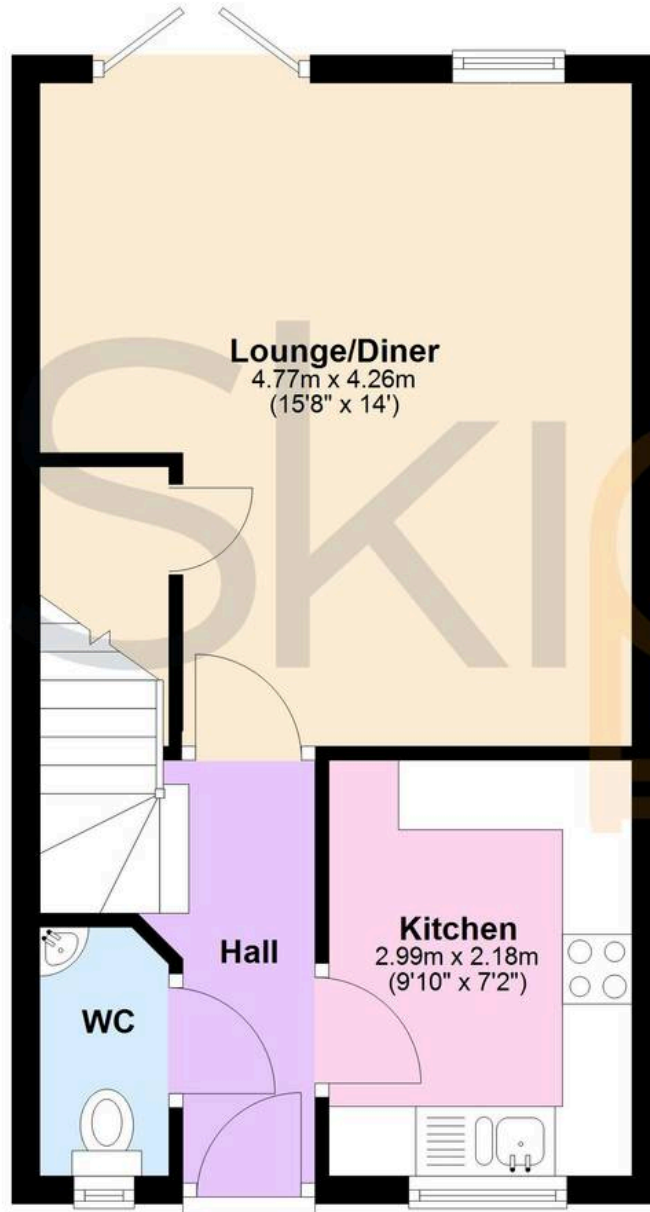
Comprising a bath with mixer taps and shower attachment with folding glass shower screen, WC, wash basin, radiator, extractor fan, tiled walls around the bath and tiled flooring





Ground Floor

Approx. 33.5 sq. metres (360.4 sq. feet)



First Floor

Approx. 33.5 sq. metres (360.4 sq. feet)



Total area: approx. 67.0 sq. metres (720.8 sq. feet)



Skippers Estate Agents – Ashford

5 Kings Parade High Street, Ashford – TN24 8TA

01233 632383

ashford@skippers-ea.co.uk

skippers-ea.co.uk



