



6 Meridian Court, Ashford  
£220,000



## 6 Meridian Court

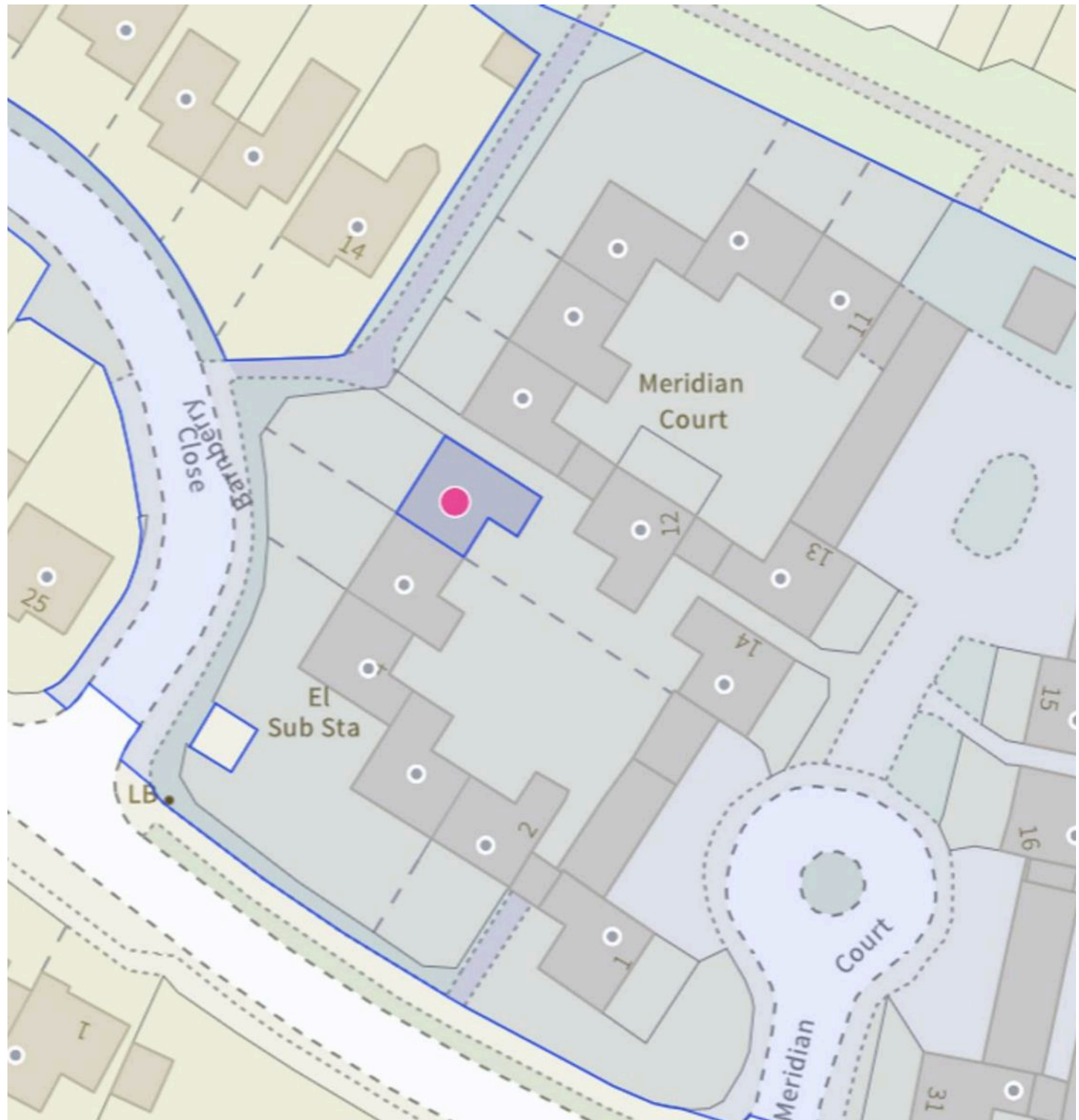
Ashford, Ashford

Immaculate 2 bed terraced bungalow in esteemed 60+ development in Singleton area. Features lounge, kitchen, shower room. Good access to amenities and transport links. Outdoor patio, communal gardens, parking area. Comfort, convenience, community in vibrant neighbourhood.

Council Tax band: C

Tenure: Leasehold

- Well Presented Bungalow in Warden Assisted Development
- Over 60's
- 2 Bedrooms
- Residents Parking Area
- Good Access to Local Amenities & Public Transport Leading to Ashford Town & International Train Station
- Popular Meridian Court within Singleton Area
- Shower Room
- Patio Area leading onto Communal Lawned Gardens
- Lounge with outlook to rear
- Kitchen



### Hallway

### Lounge

13' 5" x 11' 8" (4.09m x 3.56m)

### Kitchen

9' 10" x 9' 4" (3.00m x 2.84m)

### Bedroom

11' 9" x 11' 1" (3.58m x 3.38m)

### Bedroom

10' 6" x 9' 7" (3.20m x 2.92m)

### Shower Room







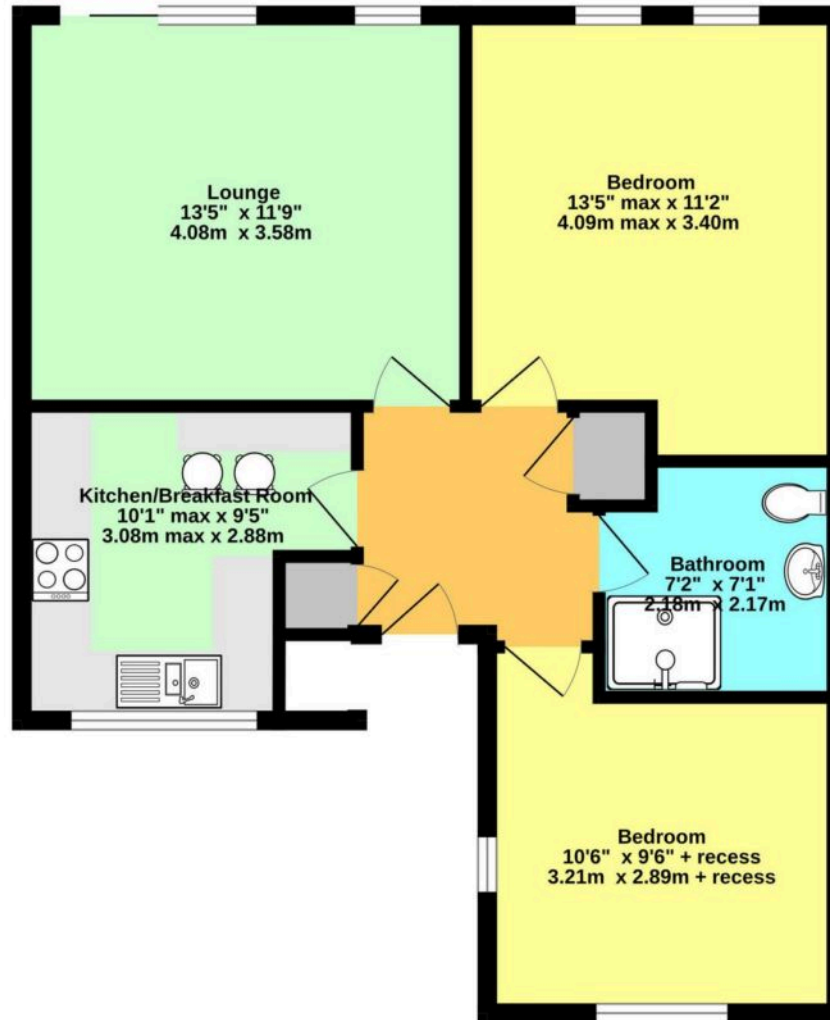












Whilst every attempt has been made to ensure the accuracy of the floorplan contained here, measurements of doors, windows, rooms and any other items are approximate and no responsibility is taken for any error, omission or mis-statement. This plan is for illustrative purposes only and should be used as such by any prospective purchaser. The services, systems and appliances shown have not been tested and no guarantee as to their operability or efficiency can be given.  
Made with Metropix ©2025





## Skippers Estate Agents – Ashford

5 Kings Parade High Street, Ashford – TN24 8TA

01233 632383

[ashford@skippers-ea.co.uk](mailto:ashford@skippers-ea.co.uk)

[skippers-ea.co.uk](http://skippers-ea.co.uk)





