



2 Langney Drive, Ashford

Guide Price £300,000

Skippers

2 Langney Drive

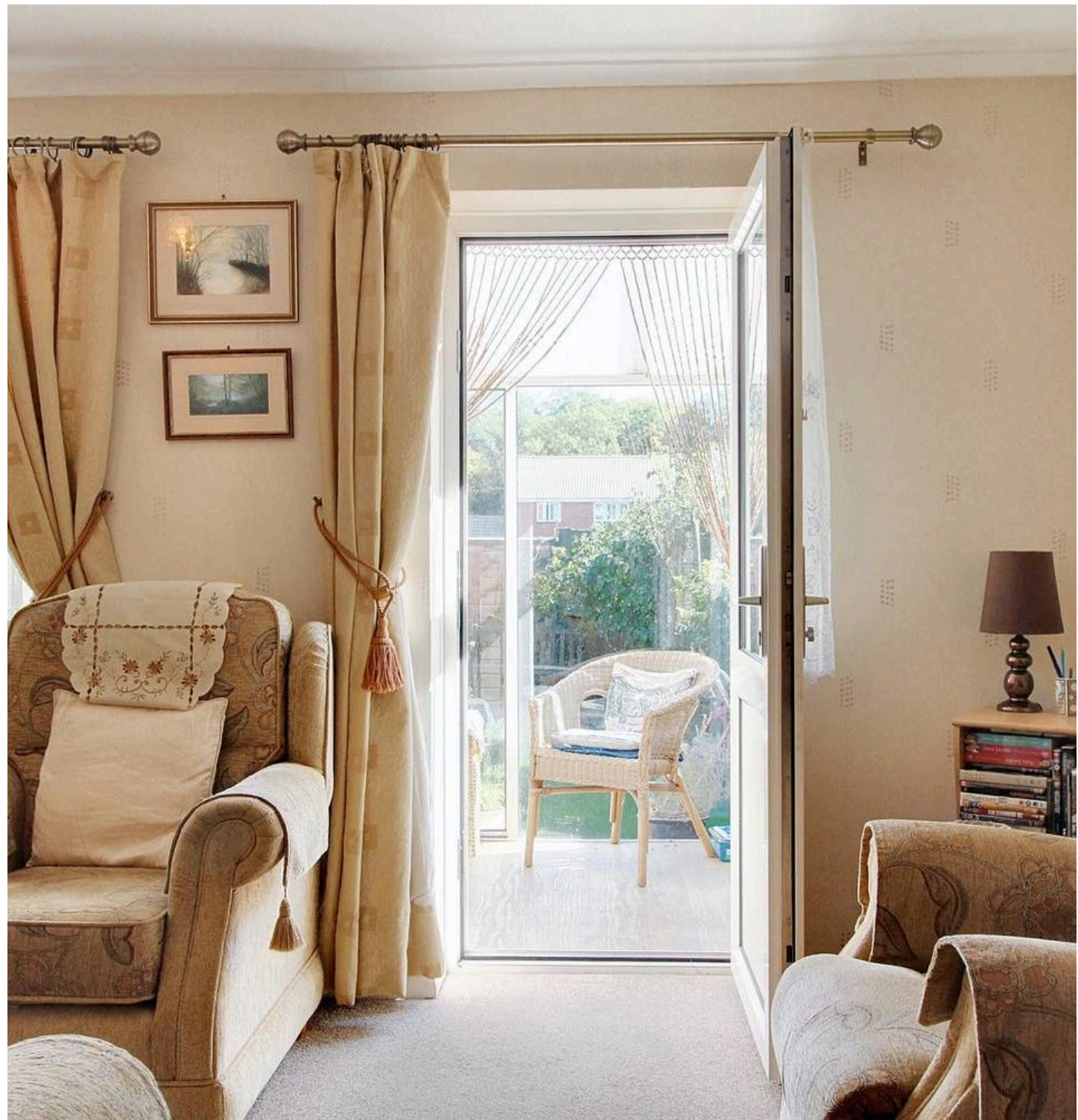
Ashford, Ashford

Spacious three-bedroom semi in sought-after Langney Drive with huge potential. Offered with no onward chain, this home features generous living space, good-sized garden, parking to the rear and scope to add a front driveway—ready for you to make it your own.

Council Tax band: C

Tenure: Freehold

- 3-bedroom semi-detached house
- Sunny rear garden
- Driveway to the rear of the garden offering space to park two cars (currently overgrown)
- Would benefit from modernising and updating
- No onward chain
- Generous kitchen/diner
- Fitted wardrobes to Bedrooms 1 & 2
- Conservatory with garden access
- Popular location with amenities close by



Hallway

uPVC door to the side with fan light and sidelight window, window to the front, stairs to the first-floor with under-stairs storage cupboard, radiator and laminate wood flooring.

Lounge

16' 3" x 10' 2" (4.96m x 3.11m)

Window to the rear and door leading to the conservatory, electric fire, radiator and fitted carpet.

Kitchen/Diner

10' 3" x 13' 10" (3.13m x 4.21m)

Window to the front, radiator and vinyl flooring. Kitchen comprises wall and base units with work surfaces over, inset stainless steel sink/drainage and tiled splash back, built-in electric double oven, 4-zone hob with extractor over, plumbing and space for washing machine and dishwasher and space for free-standing fridge/freezer.

Conservatory

12' 10" x 5' 11" (3.92m x 1.80m)

Aluminium framed glass conservatory overlooking the garden with sliding doors to the garden and to the side.

Landing

Window to the side, doors to each room, loft access, storage cupboard and fitted carpet to the stairs and landing.





Bedroom 1

10' 0" x 11' 11" (3.05m x 3.64m)

Window to the front, fitted bedroom furniture, radiator and fitted carpet.

Bedroom 2

9' 0" x 10' 2" (2.74m x 3.11m)

Window to the rear, built-in wardrobes, radiator and fitted carpet.

Bedroom 3

6' 11" x 7' 1" (2.12m x 2.17m)

Window to the rear, radiator and fitted carpet.

Bathroom

Window to the front, large rectangular shower enclosure with sliding doors and thermostatic shower, WC, wash basin with storage beneath, towel radiator, extractor fan, tiled walls and flooring.



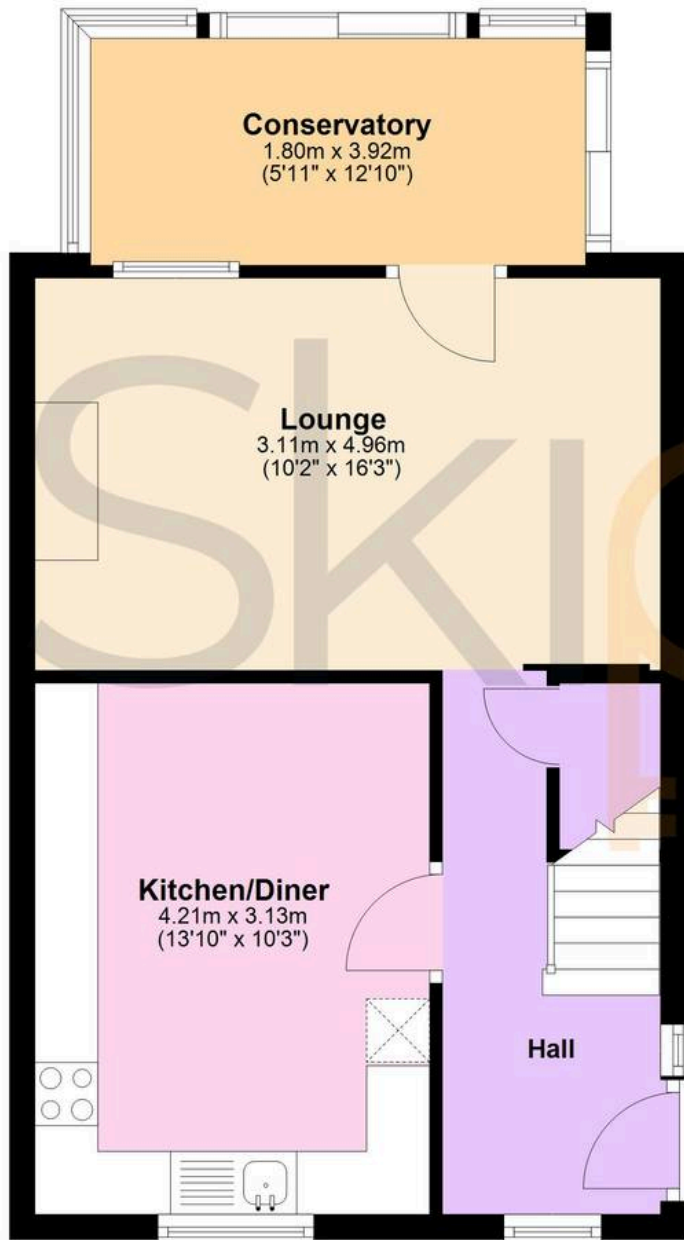






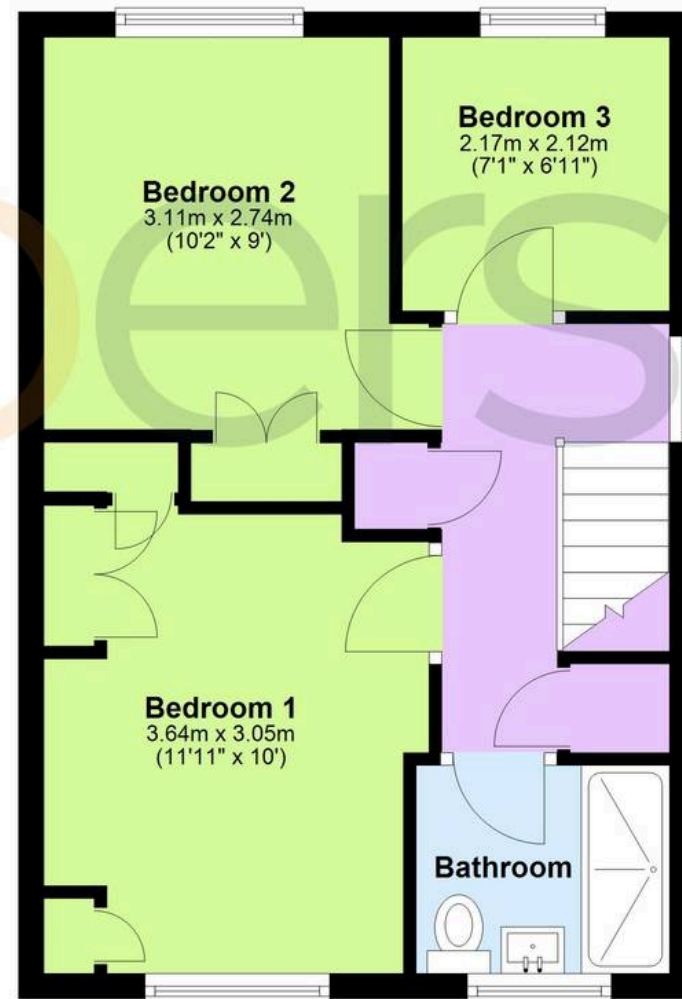
Ground Floor

Approx. 44.3 sq. metres (476.4 sq. feet)



First Floor

Approx. 36.8 sq. metres (396.1 sq. feet)



Total area: approx. 81.1 sq. metres (872.5 sq. feet)



Skippers Estate Agents – Ashford

5 Kings Parade High Street, Ashford – TN24 8TA

01233 632383

ashford@skippers-ea.co.uk

skippers-ea.co.uk



