



3 Caroland Villas Church Road, Smeeth
£425,000

3 Caroland Villas Church Road

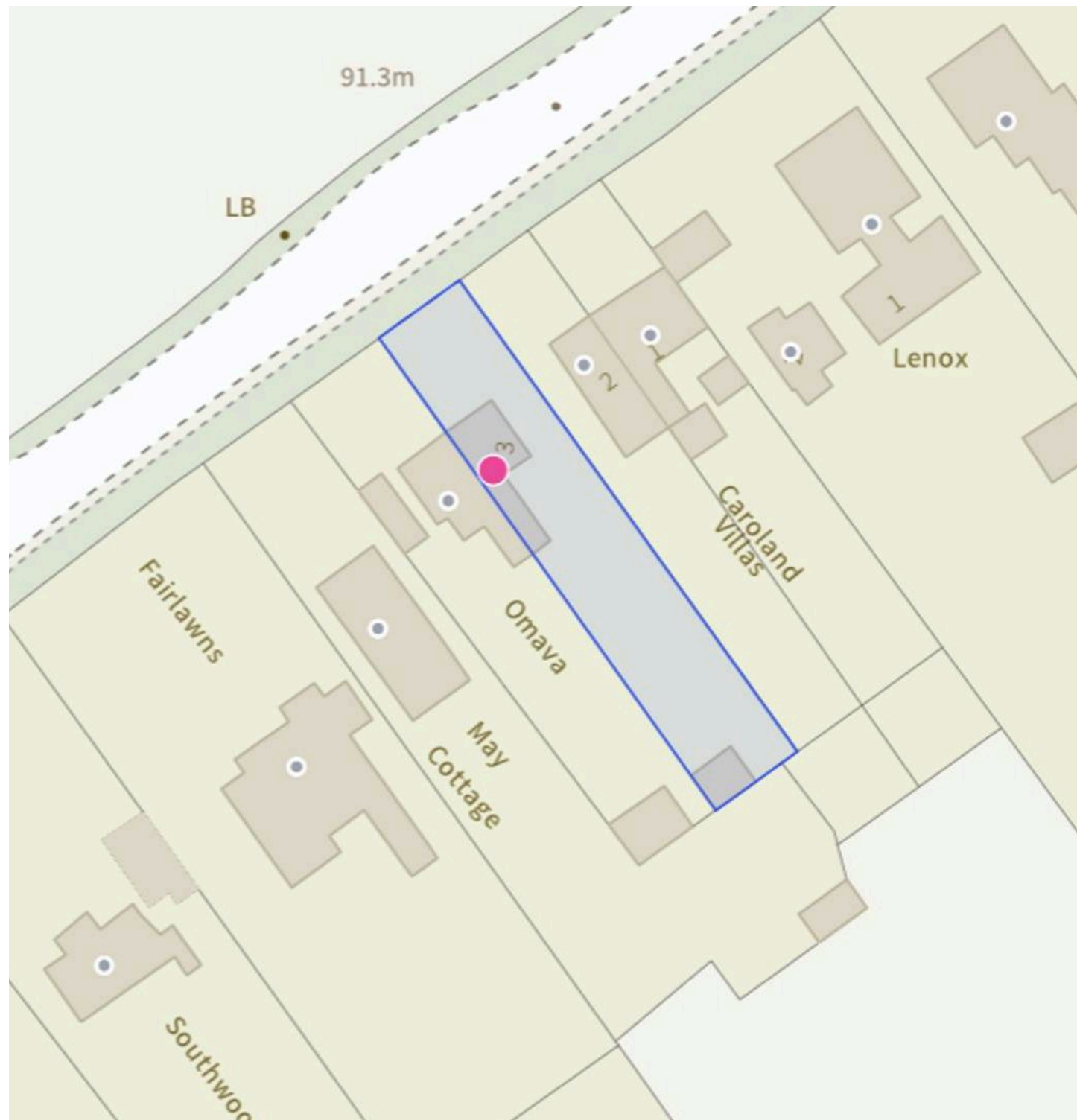
Smeeth, Ashford

Nestled in Smeeth Village, this 1930's family home offers character and modern convenience. With feature fireplaces, 3 bedrooms, and a lush garden, it's a tranquil retreat close to village amenities and schools. Perfect for nature lovers and entertainers, with a spacious shed, patio, and gated driveway for up to 4 vehicles, this property promises a lifestyle of comfort and serenity.

Council Tax band: C

Tenure: Freehold

- Semi-Rural Smeeth Village Location with Lovely Views to Front over Farmland
- Separate Lounge & Dining Room with Feature Fireplaces
- Lovely Mature Rear Gardens with Private Patio
- Ground Floor Bathroom
- Block Paved Driveway for Several Vehicles
- 3 Bedrooms
- Walking Distance to Village Amenities
- Public Transport Links with Bus Service to Coastal & Ashford Secondary Schools



Hallway

Lounge

10' 11" x 10' 8" (3.33m x 3.25m)

Dining Room

16' 6" x 10' 8" (5.03m x 3.25m)

Kitchen

14' 8" x 6' 4" (4.47m x 1.93m)

Bathroom

6' 6" x 6' 3" (1.98m x 1.91m)

Landing

Bedroom

16' 6" x 10' 8" (5.03m x 3.25m)

Bedroom

10' 8" x 9' 8" (3.25m x 2.95m)

Bedroom

7' 7" x 6' 7" (2.31m x 2.01m)

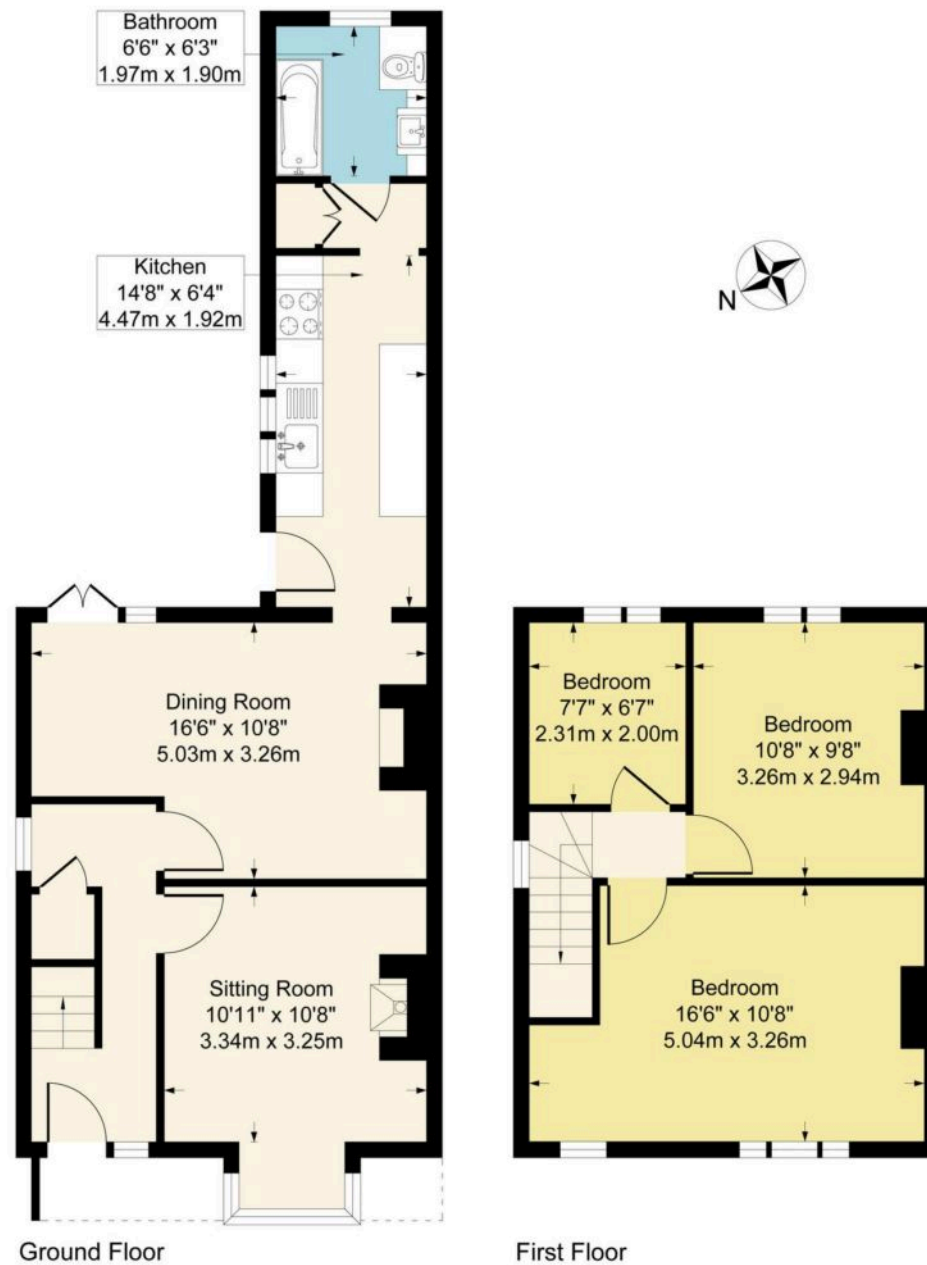








Approximate Gross Internal Area
902 sq ft - 83.8 sq m



Although every attempt has been made to ensure accuracy, all measurements are approximate.
This floorplan is for illustrative purposes only and not to scale.
Measured in accordance with RICS Standards.



Skippers Estate Agents – Ashford

5 Kings Parade High Street, Ashford – TN24 8TA

01233 632383

ashford@skippers-ea.co.uk

skippers-ea.co.uk

Skippers

