



**8 Romney Point, Ashford**

In Excess of £500,000

**Skippers**

# 8 Romney Point

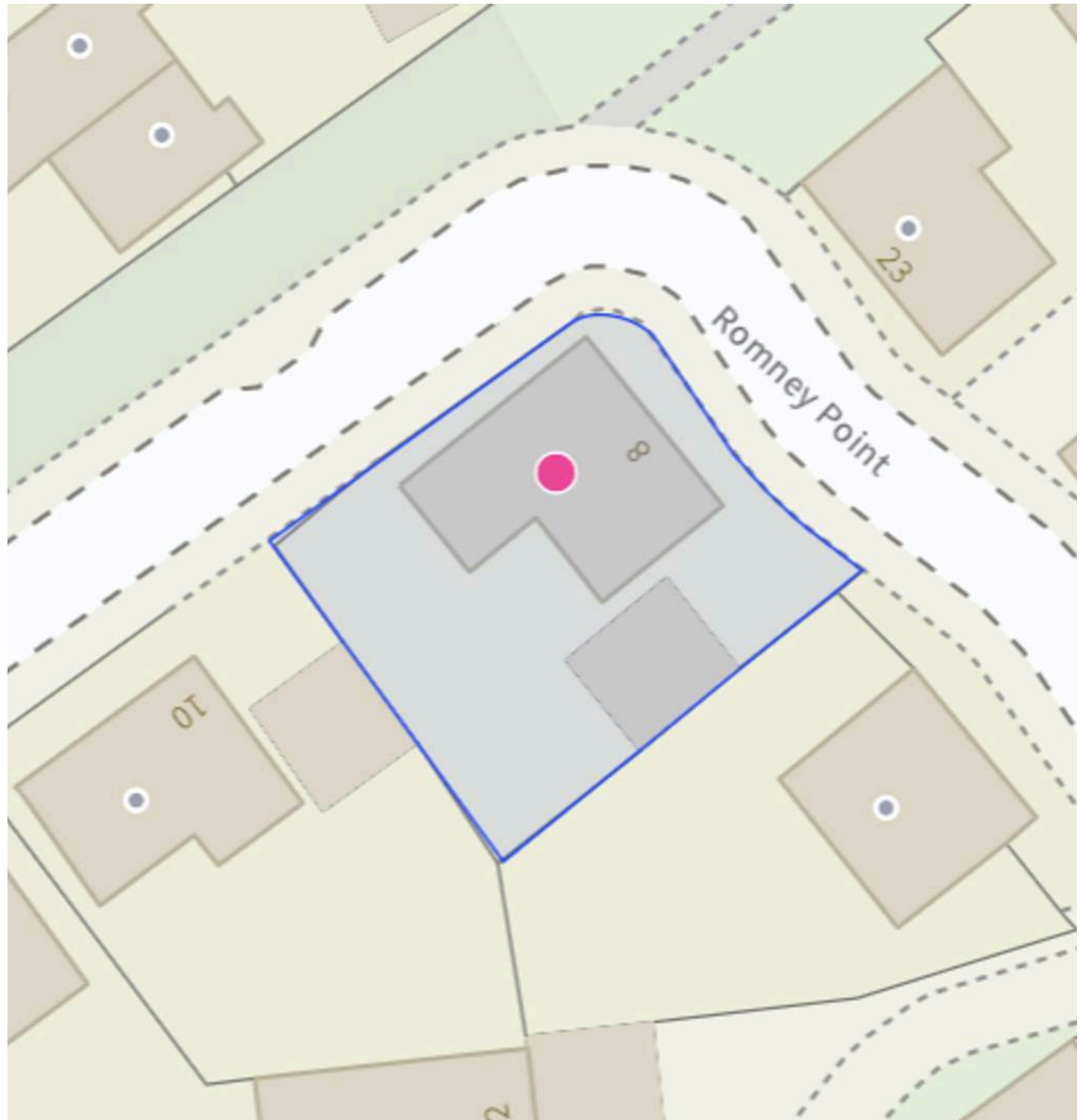
Ashford, Ashford

This impressive 4-bed detached house features a modern kitchen, open living/dining area, reception rooms, 3 bathrooms, spacious bedrooms, home office, lush garden with patio, double garage, and driveway. Perfect for families seeking style, space, and convenience with high-quality features throughout.

Council Tax band: F

Tenure: Freehold

- NO ONWARD CHAIN
- Popular Repton Park Location with Excellent access to local amenities
- Close Proximity to Highworth Girls Grammer & Repton Park Primary Schools
- Easy Access to M20 & A20
- Modern kitchen with island and integrated appliances
- French Doors Providing Direct Access to Well-maintained private garden with patio
- Double garage and off-road driveway parking
- Contemporary bathrooms with modern fixtures
- Versatile Living Accommodation with option of home office/workspace
- Attractive Detached 4 Bedroom Detached Family Home



## Hallway

## Wc

## Lounge

11' 5" x 22' 6" (3.47m x 6.86m)

## Kitchen

15' 2" x 22' 6" (4.62m x 6.86m)

## Dining room

10' 8" x 11' 5" (3.25m x 3.48m)

## Utility Room

5' 5" x 6' 4" (1.66m x 1.93m)

## Landing

## Bedroom 1

9' 6" x 9' 7" (2.90m x 2.91m)

## En-suite

5' 4" x 7' 9" (1.63m x 2.37m)

## Bedroom 2

9' 7" x 10' 7" (2.91m x 3.23m)

## En-suite

## Bedroom 3

10' 11" x 11' 4" (3.33m x 3.45m)

## Bedroom 4

12' 8" x 15' 1" (3.87m x 4.60m)

## Bathroom

6' 2" x 6' 3" (1.88m x 1.90m)





**Hallway**

**Wc**

**Lounge**

11' 5" x 22' 6" (3.47m x 6.86m)

**Kitchen**

15' 2" x 22' 6" (4.62m x 6.86m)

**Dining room**

10' 8" x 11' 5" (3.25m x 3.48m)

**Utility Room**

5' 5" x 6' 4" (1.66m x 1.93m)

**Landing**

**Bedroom 1**

9' 6" x 9' 7" (2.90m x 2.91m)

**En-suite**

5' 4" x 7' 9" (1.63m x 2.37m)

**Bedroom 2**

9' 7" x 10' 7" (2.91m x 3.23m)

**En-suite**

**Bedroom 3**

10' 11" x 11' 4" (3.33m x 3.45m)

**Bedroom 4**

12' 8" x 15' 1" (3.87m x 4.60m)

**Bathroom**

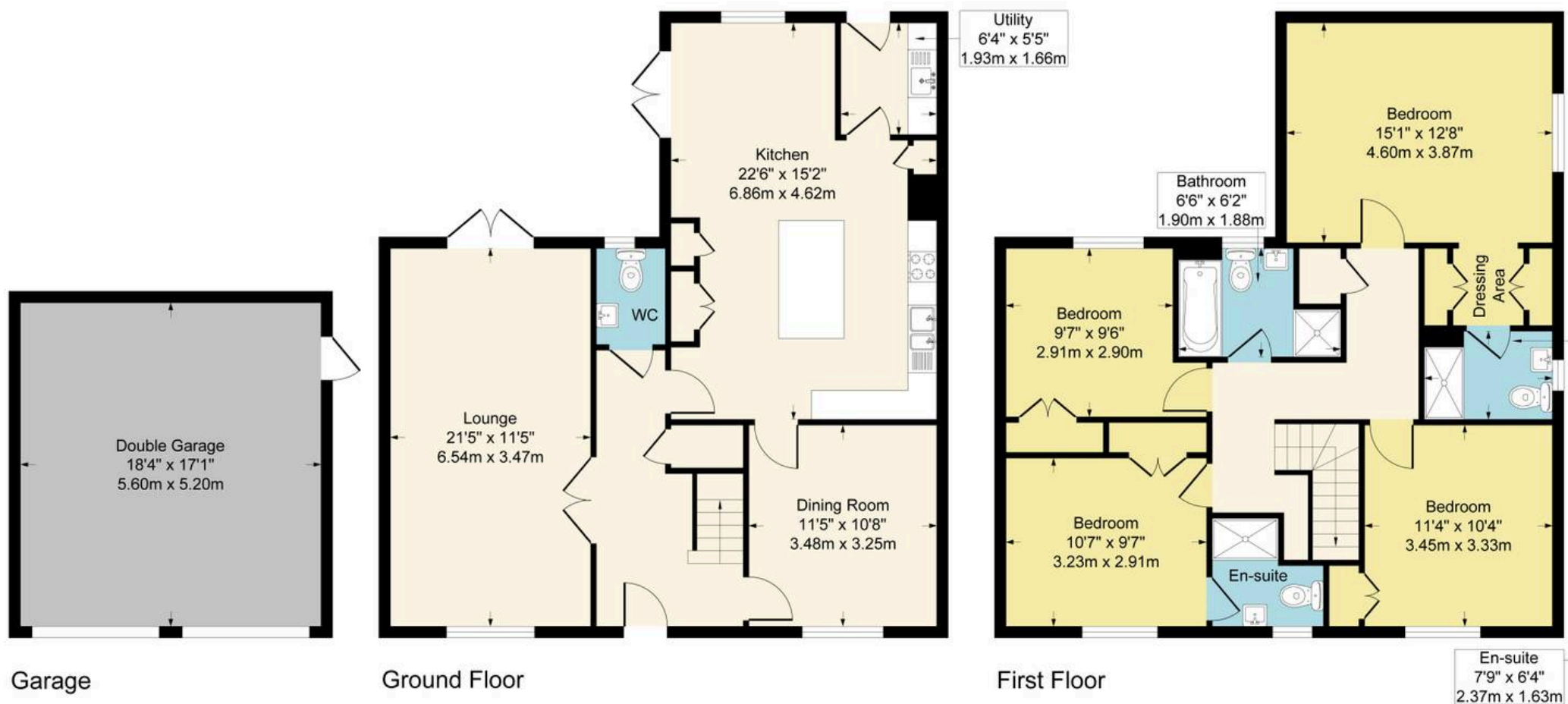
6' 2" x 6' 3" (1.88m x 1.90m)



**Approximate Gross Internal Area = 1718 sq ft - 160 sq m**

**Garage Area = 313 sq ft - 29 sq m**

**Total Area = 2031 sq ft - 189 sq m**



Although every attempt has been made to ensure accuracy, all measurements are approximate.

This floorplan is for illustrative purposes only and not to scale.

Measured in accordance with RICS Standards.



## Skippers Estate Agents – Ashford

5 Kings Parade High Street, Ashford – TN24 8TA

01233 632383

[ashford@skippers-ea.co.uk](mailto:ashford@skippers-ea.co.uk)

[skippers-ea.co.uk](http://skippers-ea.co.uk)

Skippers

