



88 Church Road, Sevington
£330,000

88 Church Road

Sevington, Ashford

Three-bedroom semi in popular Sevington with flexible ground-floor living, spacious lounge, modern kitchen/diner, and 100ft garden with patio, lawn, and outbuildings. Driveway parking included. Council Tax band: C

Tenure: Freehold

- No Onward Chain
- Semi-detached Victorian property
- Ground-floor bedroom with WC
- Off road parking
- Easy access to Ashford International Station and the M20
- Spacious lounge
- Over 100ft rear garden
- Convenient location with children's play park opposite



Sitting Room

14' 6" x 10' 11" (4.43m x 3.32m)

Double glazed bay window to the front, gas fire and radiator.

Kitchen/ Dining Room

14' 6" x 13' 6" (4.42m x 4.11m)

Space for dining table with double doors to lean to conservatory, matching wall and base units, one and a half bowl stainless steel sink, gas hob with extractor fan over, electric oven, space for fridge freezer, radiator.

Ground Floor Bedroom

15' 0" x 7' 5" (4.57m x 2.26m)

Double glazed window to rear, built in cupboard, radiator.

Downstairs Cloakroom

Wash hand basin with cupboards under, low level WC

Lean to Conservatory

Windows to side, double doors leading to garden.

Bedroom 1

14' 6" x 8' 11" (4.42m x 2.72m)

Two double glazed windows to front, ornate fire place, radiator.

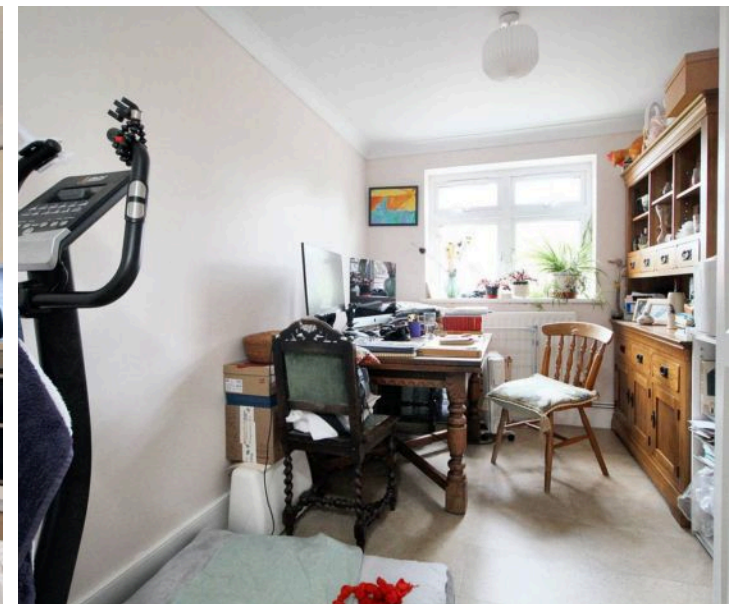
Bedroom 2

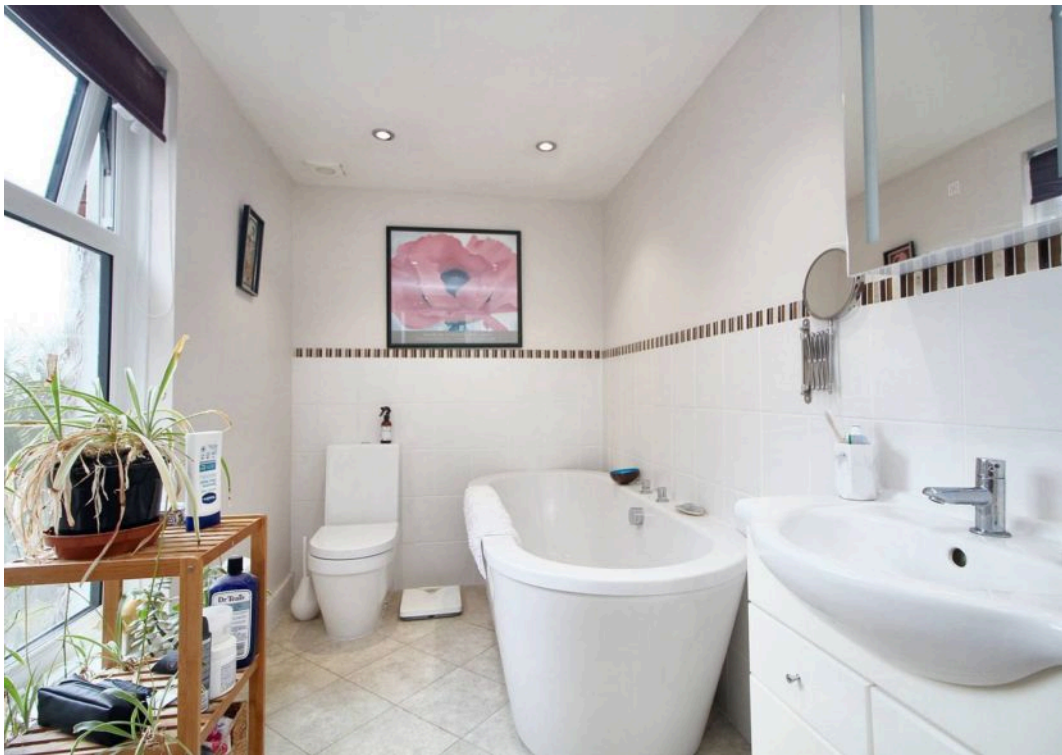
9' 2" x 8' 9" (2.79m x 2.67m)

Double glazed window to rear, radiator.

Bathroom

Double glazed window to side, walk-in shower cubicle, contemporary suite with roll top bath, basin unit with mixer tap, low level WC, stainless steel heated towel rail.

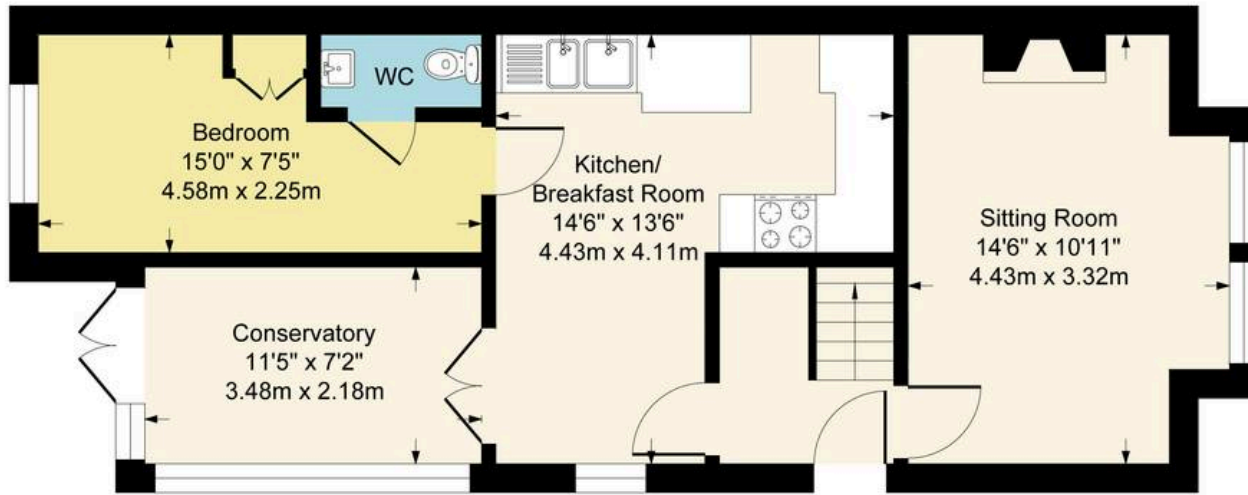




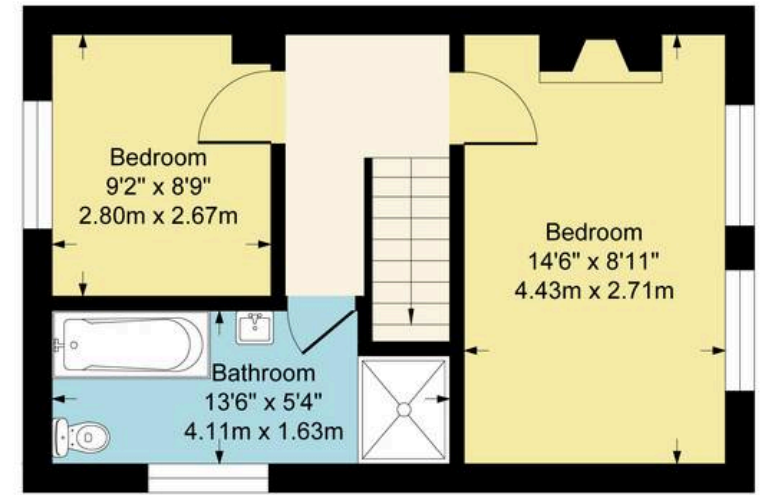




**Approximate Gross Internal Area
850 sq ft - 80 sq m**



Ground Floor



First Floor

Although every attempt has been made to ensure accuracy, all measurements are approximate.
This floorplan is for illustrative purposes only and not to scale.
Measured in accordance with RICS Standards.



Skippers Estate Agents – Ashford

5 Kings Parade High Street, Ashford – TN24 8TA

01233 632383

ashford@skippers-ea.co.uk

skippers-ea.co.uk



