



**Oaklands Ashford Road, Bethersden**  
**£775,000**



# Oaklands Ashford Road

Bethersden, Ashford

'Oaklands' is a substantial family home, enjoying a large garden and plenty of driveway parking, situated just outside the village of Bethersden.

Council Tax band: G

Tenure: Freehold

- Substantial family home, boasting in excess of 2,100sqft of internal accommodation
- Versatile accommodation providing 5 double bedrooms
- Massive kitchen/dining/family room measuring an impressive 32ft!
- Large driveway, plenty of space to accommodate up to 8 vehicles
- Bi-folding doors opening from the Kitchen/Dining/Family Room onto the terrace
- Large garden, lots of space for entertaining
- About 1.5 miles to Bethersden Village Centre, 5.5 miles to Ashford & 7 miles to Tenterden
- Two en-suite bedrooms, primary bedroom also enjoying a dressing room



## Entrance Hallway

## WC

## Bedroom

10' 7" x 10' 6" (3.22m x 3.21m)

## Lounge

17' 10" x 13' 1" (5.43m x 4m)

## Kitchen/Dining/Family Room

32' 10" x 12' 11" (10.01m x 3.93m)

## Utility Room

5' 8" x 11' 4" (1.73m x 3.46m)

## First floor landing

## Primary Bedroom

13' 2" x 13' 1" (4.01m x 4m)

## Dressing Room

6' 1" x 7' 4" (1.85m x 2.24m)

## En-suite

## Bedroom

9' 7" x 13' 11" (2.93m x 4.24m)

## En-suite

## Bedroom

9' 7" x 12' 5" (2.93m x 3.79m)

## Bedroom

9' 9" x 9' 5" (2.98m x 2.88m)

## Bathroom





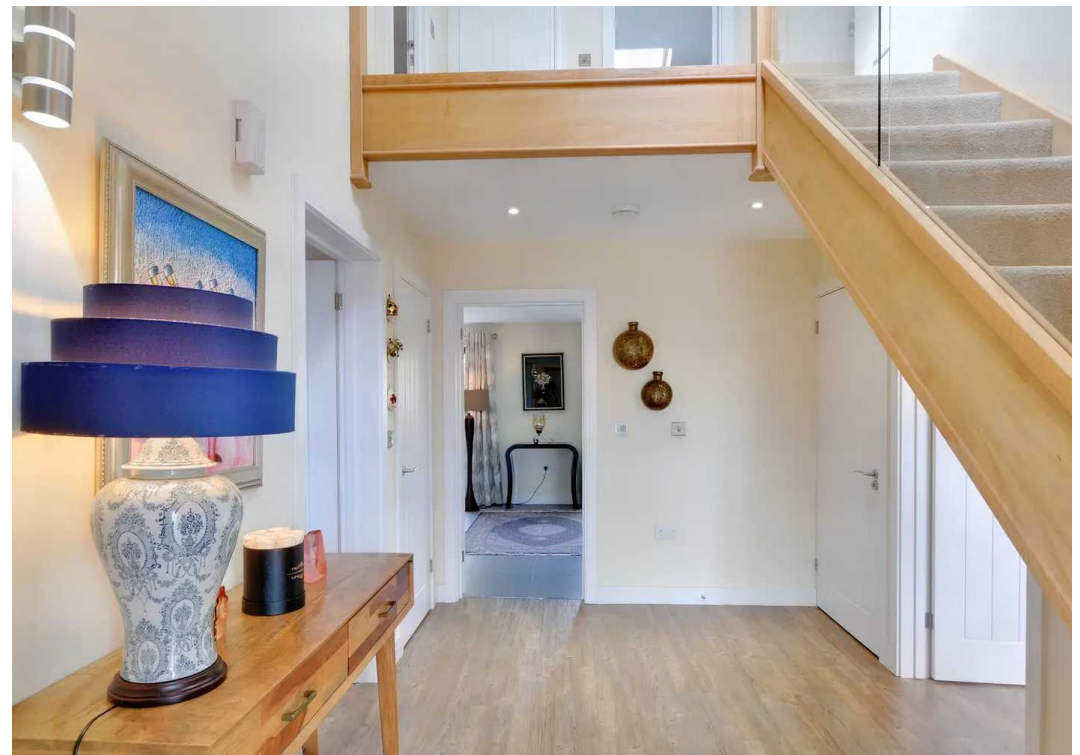
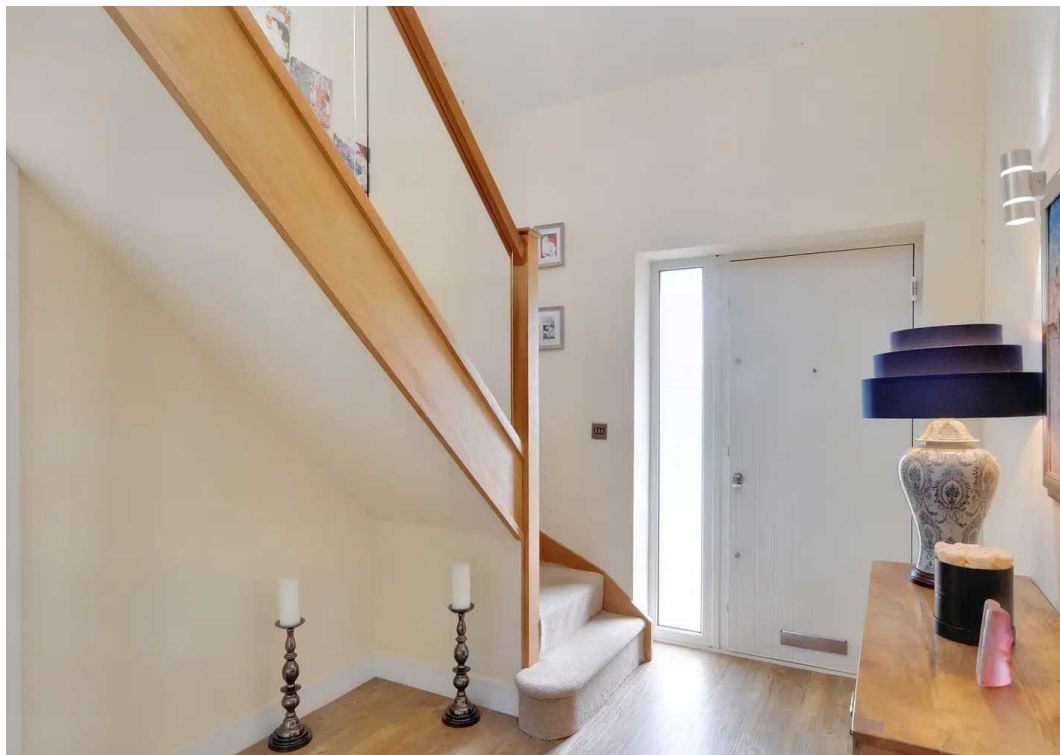
**REAR GARDEN**

**ON DRIVE**

7 Parking Spaces









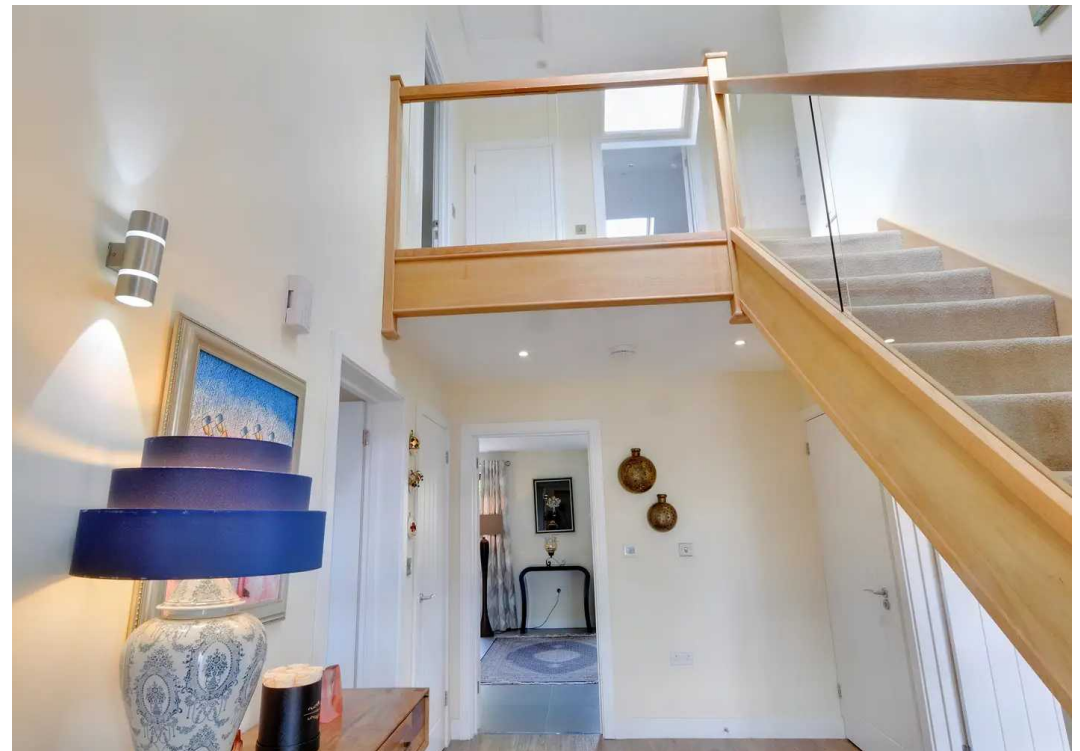














































### Ground Floor

Approx. 116.4 sq. metres (1252.4 sq. feet)



### First Floor

Approx. 87.5 sq. metres (942.3 sq. feet)



Total area: approx. 203.9 sq. metres (2194.7 sq. feet)

Plans are for layout purposes only and are not drawn to scale, with any doors, windows and other internal features merely intended as a guide.  
Plan produced using PlanUp.