



2 Oak Drive, St. Marys Bay
£300,000

2 Oak Drive

St. Marys Bay, Romney Marsh

This stylish semi-detached bungalow features 2 bedrooms, 2 reception rooms, modern kitchen, contemporary bathroom, and spacious garden with patio and storage shed. Ideal for buyers seeking comfort, style, and functionality.

- No onward chain
- Two double bedrooms
- Located in the popular Trees Estate.
- Two reception rooms
- Driveway parking
- Detached garage
- Bright living room with fireplace
- Abundant natural light throughout





This beautifully presented semi-detached bungalow offers an attractive blend of modern style and practical living. Boasting two spacious bedrooms and two generous reception rooms, the home has been thoughtfully designed to maximise light and space. The kitchen features sleek white cabinetry, and access to a well-maintained garden, perfect for those who enjoy indoor-outdoor living. The bright living room is enhanced by a large window and a cosy fireplace, creating a welcoming space for relaxation or entertaining.

Additional highlights include a contemporary bathroom with modern fixtures and built-in storage, as well as bedrooms that benefit from ample natural light. Outside, the property impresses with a spacious garden featuring a lush lawn, patio area, and a practical storage shed – ideal for outdoor dining or family gatherings. A well-kept front garden offers strong kerb appeal, complemented by a spacious driveway and detached garage, providing ample off-road parking and storage options. This bungalow is perfectly suited for buyers seeking a comfortable, stylish, and functional home.

- No onward chain
- Two double bedrooms
- Located in the popular Trees Estate.
- Two reception rooms
- Driveway parking
- Detached garage
- Bright living room with fireplace
- Abundant natural light throughout

Lounge

10' 9" x 19' 6" (3.27m x 5.95m)

Lovely light, bright lounge.

Dining Room

11' 0" x 6' 6" (3.36m x 1.97m)

This dining room is perfectly positioned next to the kitchen.

Kitchen

7' 7" x 11' 10" (2.32m x 3.61m)

Bathroom**Bedroom**

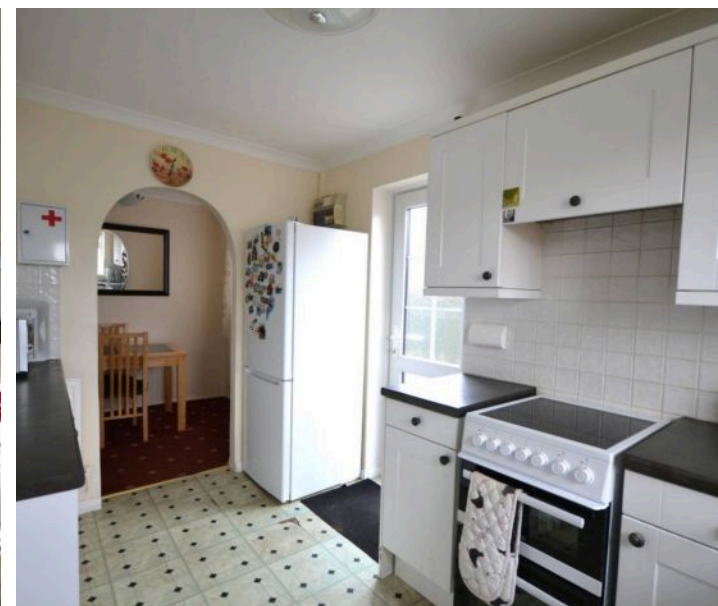
10' 10" x 11' 7" (3.31m x 3.54m)

Spacious double bedroom with views over the garden.

Bedroom

10' 9" x 8' 7" (3.27m x 2.62m)

Second double bedroom with views over the garden.



GARDEN

Mature front and rear garden

GARAGE

Single Garage

Large driveway for multiple cars and a spacious garage that benefits from a new roof.

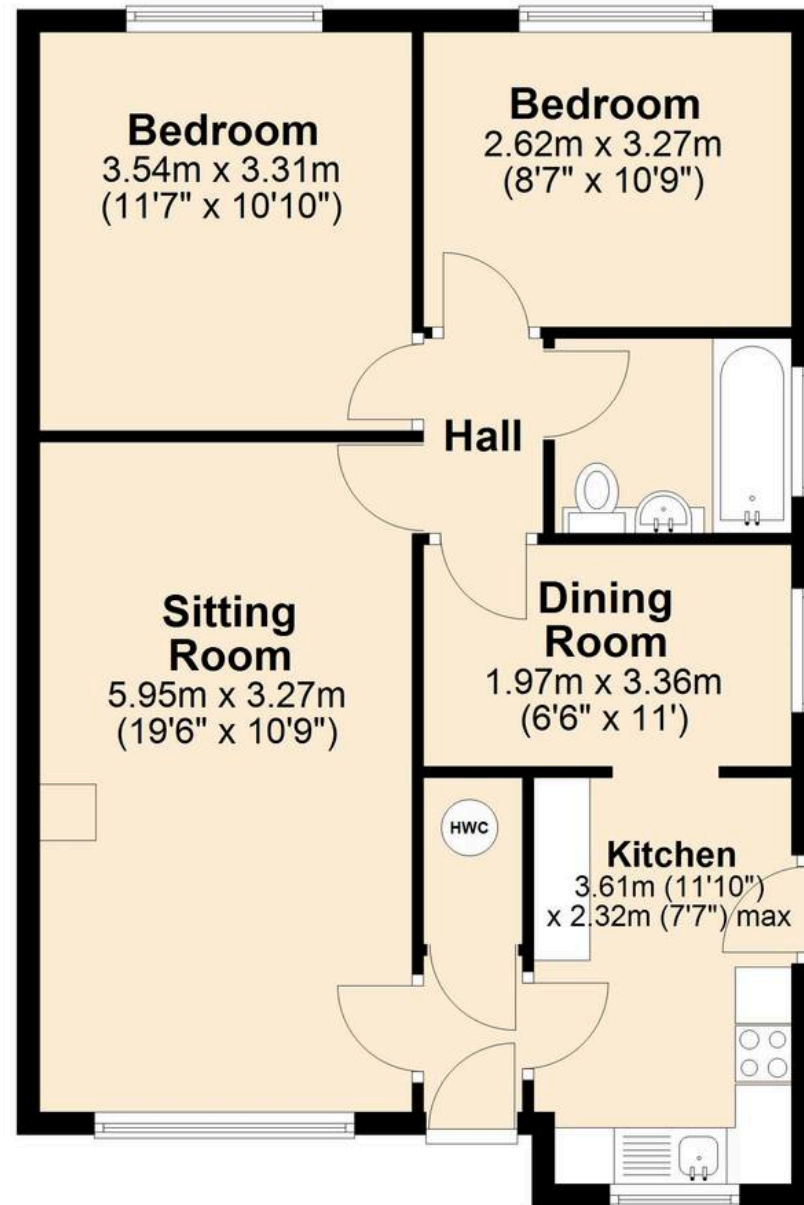






Ground Floor

Approx. 65.8 sq. metres (708.8 sq. feet)



Total area: approx. 65.8 sq. metres (708.8 sq. feet)



Skippers Estate Agents Cheriton/Folkestone

30 High Street, Cheriton - CT19 4ET

01303 279955

cheriton@skippers-ea.co.uk

skippers-ea.co.uk

Skippers