



97 Mead Road, Willesborough
£265,000

97 Mead Road

Willesborough, Ashford

Spacious 2-bed semi-detached home in sought-after Willesborough area. Lounge/dining area, modern kitchen, 2 double bedrooms, family bathroom. Driveway & close to Ashford International Station

Council Tax band: B

Tenure: Freehold

- Semi Detached house
- Potential for driveway parking
- Two double bedrooms
- 1 mile to Ashford International Station (approx. 20 minutes walking)
- Modern fitted kitchen with integrated appliances
- Located within easy reach of shops, parks, and motorway links
- Generous rear garden



Entrance Porch

Lounge/ Dining Room

22' 1" x 9' 0" (6.72m x 2.75m)

Dual aspect with window to the front & French doors opening to the garden, laminate flooring and radiators.

Kitchen

Double glazed window and door to the side. Fitted wall and base units, Electric hob with extractor fan, electric oven, integrated fridge/ freezer and dishwasher, space and plumbing for washing machine, sink unit and with mixer tap.

Landing

Doors leading to:

Bedroom 1

9' 8" x 9' 3" (2.94m x 2.83m)

Window to front, built in storage cupboard, fireplace and radiator.

Bedroom 2

Window to rear, feature fire place and radiator.

Bathroom

Frosted window to side, tiled walls and floor, heated towel rail, wash basin with vanity unit, bath, WC, airing cupboard

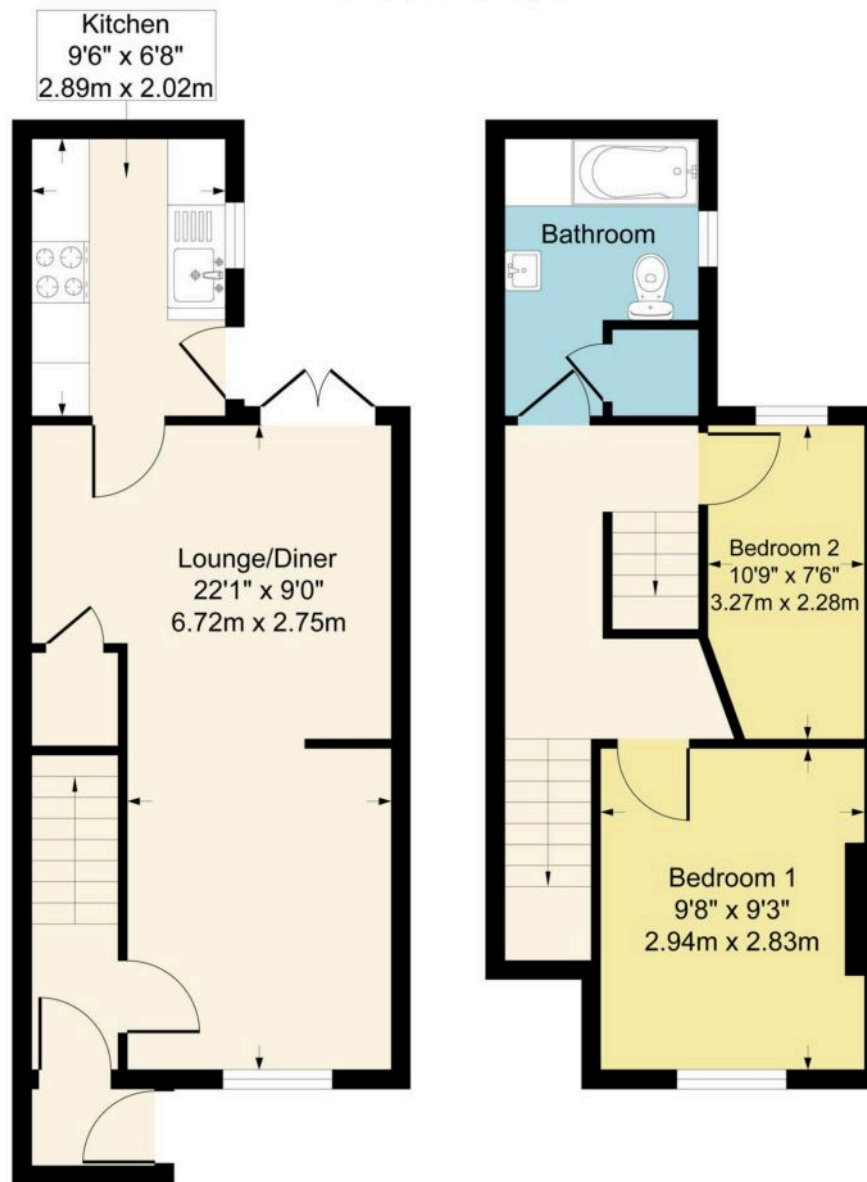
Loft Room

Velux window to the rear, eaves storage.





Approximate Gross Internal Area
674 sq ft - 63 sq m



Ground Floor

First Floor

Although every attempt has been made to ensure accuracy, all measurements are approximate.
This floorplan is for illustrative purposes only and not to scale.
Measured in accordance with RICS Standards.



Skippers Estate Agents – Ashford

5 Kings Parade High Street, Ashford – TN24 8TA

01233 632383

ashford@skippers-ea.co.uk

skippers-ea.co.uk

Skippers

