



**5 Common Way, Hothfield**

Guide Price **£275,000**

**Skippers**



## 5 Common Way

Hothfield, Ashford

Three-bedroom end of terrace home in popular residential area. Large front garden, spacious living room, fitted kitchen, spacious rear garden. (Furniture in photos belongs to former tenants.)

Council Tax band: B

Tenure: Freehold

- Spacious lounge
- Enclosed garden





**Lounge**

17' 10" x 10' 8" (5.43m x 3.26m)

**Dining Room/Utility**

7' 1" x 7' 0" (2.15m x 2.13m)

**Kitchen/Breakfast Room**

13' 4" x 10' 4" (4.06m x 3.15m)

**Bedroom One**

12' 2" x 10' 3" (3.70m x 3.12m)

**Bedroom Two**

31' 6" x 27' 3" (9.60m x 8.30m)

**Bedroom Three**

31' 2" x 22' 8" (9.50m x 6.90m)











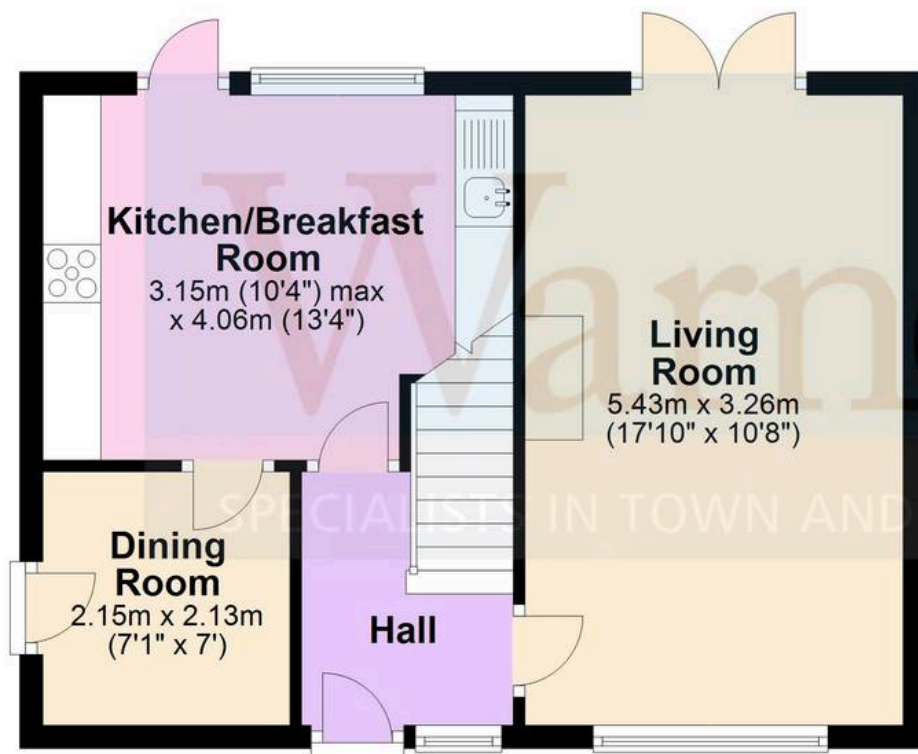






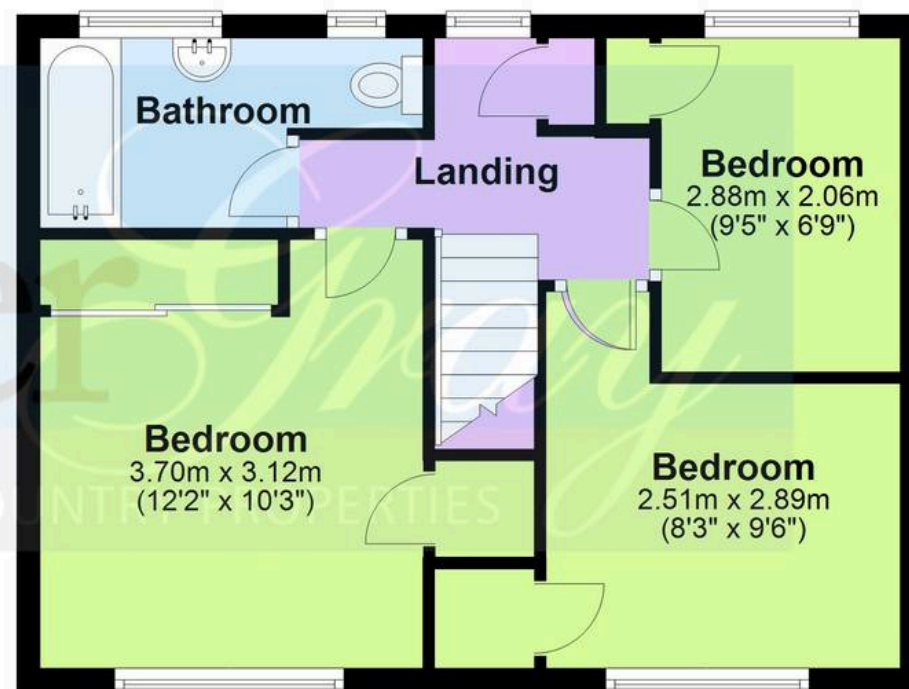
## Ground Floor

Approx. 40.4 sq. metres (434.6 sq. feet)



## First Floor

Approx. 39.3 sq. metres (423.3 sq. feet)



Total area: approx. 79.7 sq. metres (857.8 sq. feet)

Plans are for layout purposes only and are not drawn to scale, with any doors, windows and other internal features merely intended as a guide. Copyright WarnerGray.  
Plan produced using PlanUp.





## Skippers Estate Agents – Ashford

5 Kings Parade High Street, Ashford – TN24 8TA

01233 632383

[ashford@skippers-ea.co.uk](mailto:ashford@skippers-ea.co.uk)

[skippers-ea.co.uk](http://skippers-ea.co.uk)

Skippers



