



11 Downs Close, Charing
£250,000

11 Downs Close

Charing, Ashford

Situated in a peaceful cul-de-sac just a short walk from the heart of the village, this rarely available semi-detached bungalow offers comfortable single-storey living in a sought-after location. Council Tax band: B

Tenure: Freehold

- Two Bedrooms
- Gas Central Heating
- Semi Detached Bungalow
- Quiet Residential Cul-De-Sac
- Walking Distance To Village Centre



Lounge

16' 10" x 10' 6" (5.12m x 3.20m)

The living room has a front-facing window allowing good natural light and wood-effect flooring throughout. A decorative cast iron fireplace forms a central feature, with space for shelving or storage on either side. There are sliding doors leading to the main bedroom, along with separate doors to the second bedroom and kitchen.

Kitchen

9' 1" x 7' 2" (2.77m x 2.18m)

The kitchen is fitted with a range of matching wall and base units, providing good storage and worktop space. There is a stainless steel sink set below a rear-facing window, a freestanding cooker with extractor above, and space for a washing machine and fridge freezer. The room has tiled splashbacks and vinyl flooring,





Bedroom One

10' 6" x 8' 3" (3.20m x 2.51m)

This bedroom includes a front-facing window allowing natural light and is fitted with a radiator beneath. The room has wood-effect flooring, storage area space for bedroom furniture. A sliding door leads through to the adjoining living room.

Bedroom Two

10' 4" x 6' 8" (3.14m x 2.03m)

This is a rear-facing bedroom with a window overlooking the garden. The room has wood-effect flooring, space for a bed and storage furniture.

Bathroom

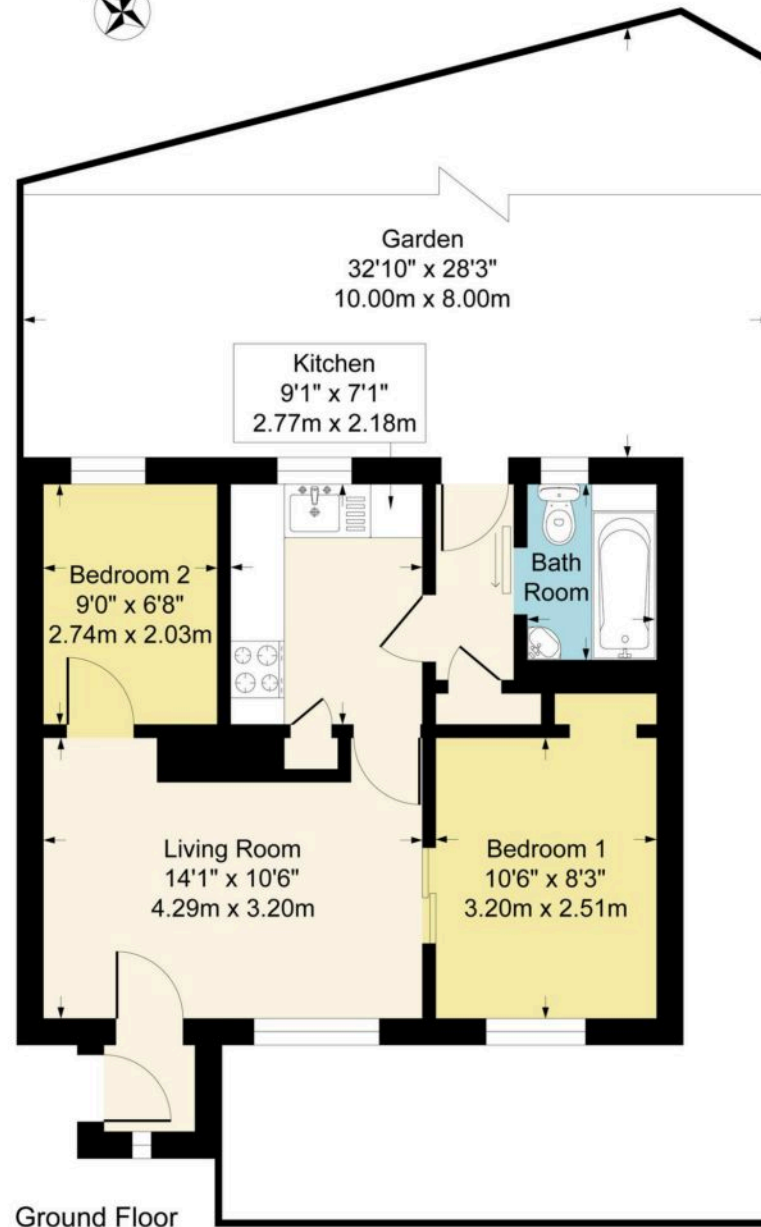
The bathroom is fitted with a white three-piece suite comprising a shaped bath with shower and screen, a wash basin, and a WC. The walls are part-tiled with patterned ceramic tiles, and there is an obscured window providing natural light and ventilation.







Approximate Gross Internal Area
473 sq ft - 44 sq m



Although every attempt has been made to ensure accuracy, all measurements are approximate.
This floorplan is for illustrative purposes only and not to scale.
Measured in accordance with RICS Standards.



Skippers Estate Agents – Ashford

5 Kings Parade High Street, Ashford – TN24 8TA

01233 632383

ashford@skippers-ea.co.uk

skippers-ea.co.uk

Skippers

