



398a Hythe Road, Willesborough
£1,200 pcm

Skippers

398a Hythe Road

Willesborough, Ashford

Nestled in a prime location, this 2-bed flat features an exclusive entrance for privacy. Modern interior, study/dressing room, recent refurbishment.

Allocated parking, near hospital, local amenities, and transport links. Ideal for professionals, couples, or small families seeking comfort and convenience.

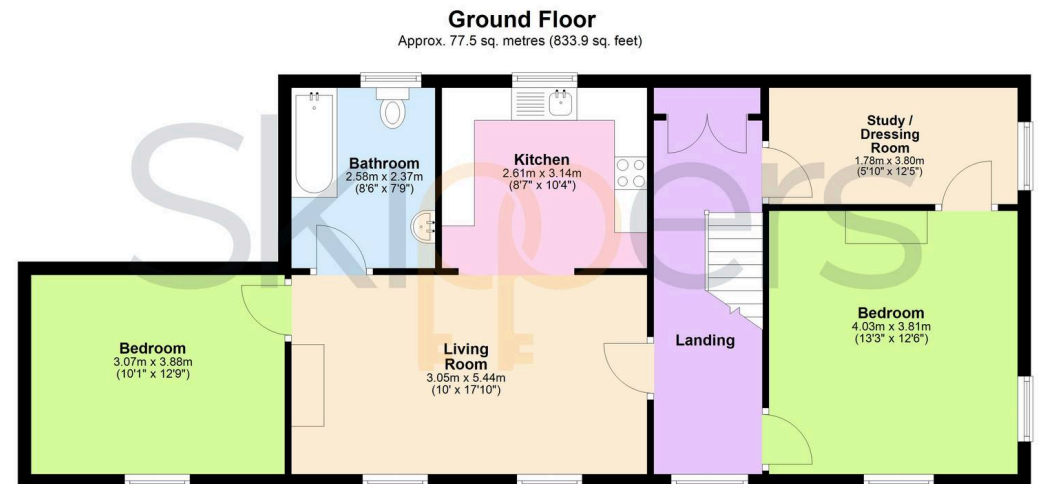
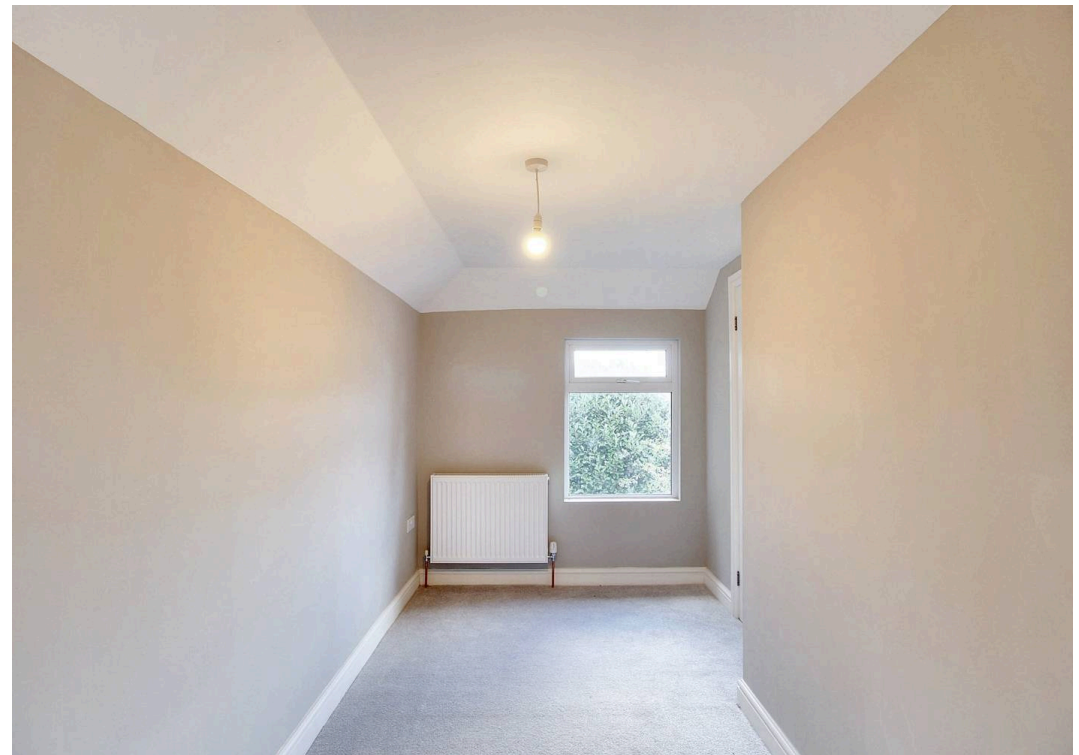
Council Tax band: TBD

Tenure: Leasehold

- Two Double Bedroom Apartment
- Own Entrance
- Additional Study / Dressing Room
- Modern, Refurbished Accommodation
- One Allocated Parking Space
- Walking Distance To William Harvey Hospital
- Great Access To Local Shops, Amenities & Transport Links



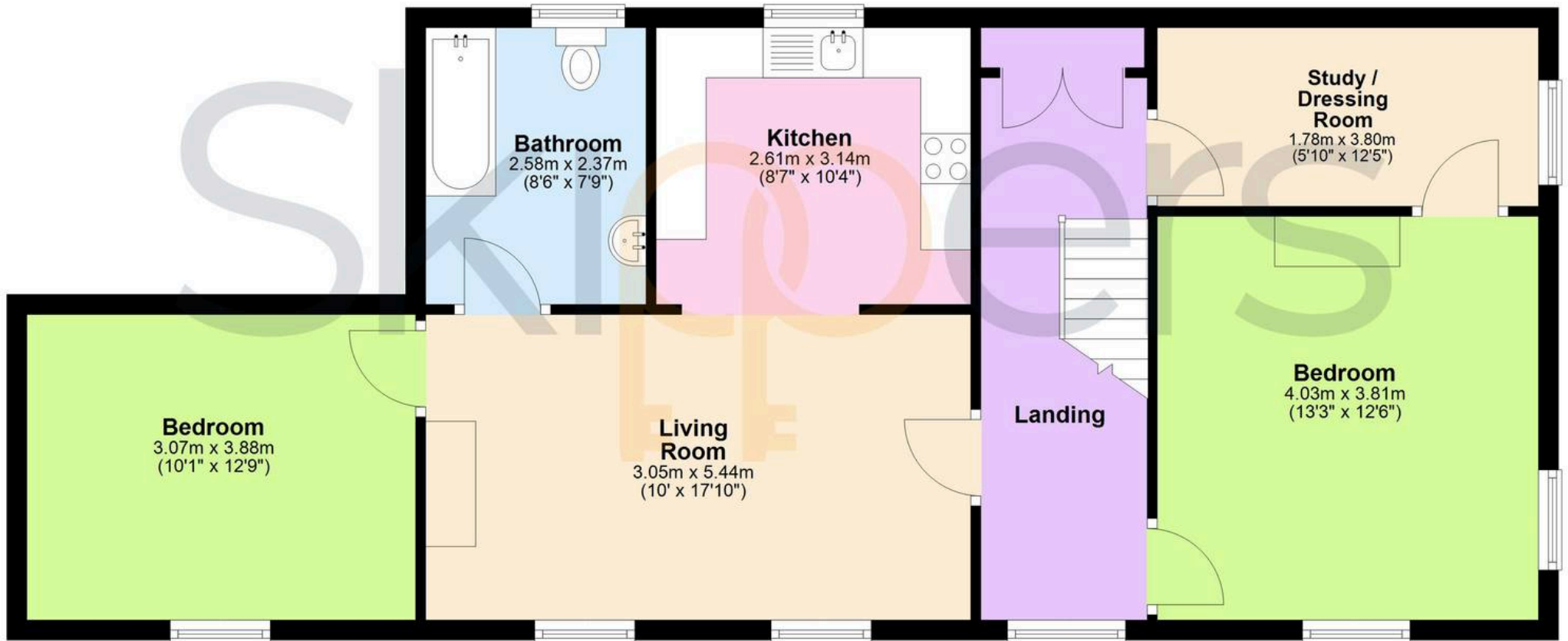




Total area: approx. 77.5 sq. metres (833.9 sq. feet)

Ground Floor

Approx. 77.5 sq. metres (833.9 sq. feet)



Total area: approx. 77.5 sq. metres (833.9 sq. feet)