



134 Dunes Road, Greatstone
£365,000

134 Dunes Road

Greatstone, New Romney

Located near the beach, this spacious 4-bed bungalow offers a serene retreat with field views, a detached garage, ample parking, and a home office. Ideal for families or remote workers, it needs updating but presents a fantastic opportunity to create a dream home in a sought-after setting. Council Tax band: E

Tenure: Freehold

- Extremely spacious detached bungalow
- Ready for you to put your own stamp on this lovely home.
- Four double bedrooms
- Just a short stroll from the beach.
- Detached garage with workshop area.
- Garden with field views.
- Ample off road parking for several cars.
- Two ensuite shower rooms.



Entrance Hall

Welcoming hallway with leading through this spacious home.

Living room

12' 10" x 21' 0" (3.91m x 6.41m)

This spacious living room is flooded with light from the two picture windows.

Office area

14' 4" x 5' 10" (4.37m x 1.77m)

This room would be a perfect home office or maybe a snug.

Kitchen

14' 10" x 13' 6" (4.53m x 4.11m)

This kitchen has bags of space with a fitted larder cupboard.

Dining Room

12' 2" x 8' 10" (3.70m x 2.68m)

This beautiful dining space with French doors leading you to the garden.

Utility room

This handy utility room with a door leading to the driveway is a perfect place to leave all those boots after that walk on the beach.

WC**Family bathroom**

This family bathroom is perfectly appointed close to the two ground floor bedrooms.





Bedroom

12' 9" x 10' 8" (3.88m x 3.25m)

This is a spacious double bedroom with fitted storage.

Bedroom

12' 11" x 13' 4" (3.93m x 4.07m)

Another spacious double bedroom with fitted storage and French doors leading to the garden.

Landing

Bedroom

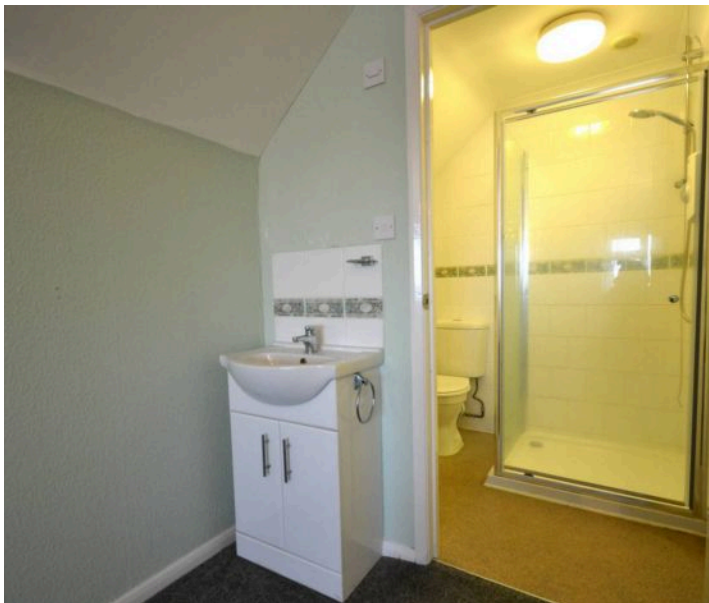
16' 4" x 12' 7" (4.99m x 3.84m)

This double bedroom has stunning field views and benefits from a en-suite shower room.

Bedroom

14' 6" x 12' 7" (4.42m x 3.84m)

This spacious double bedroom with eaves storage and an en-suite shower room.

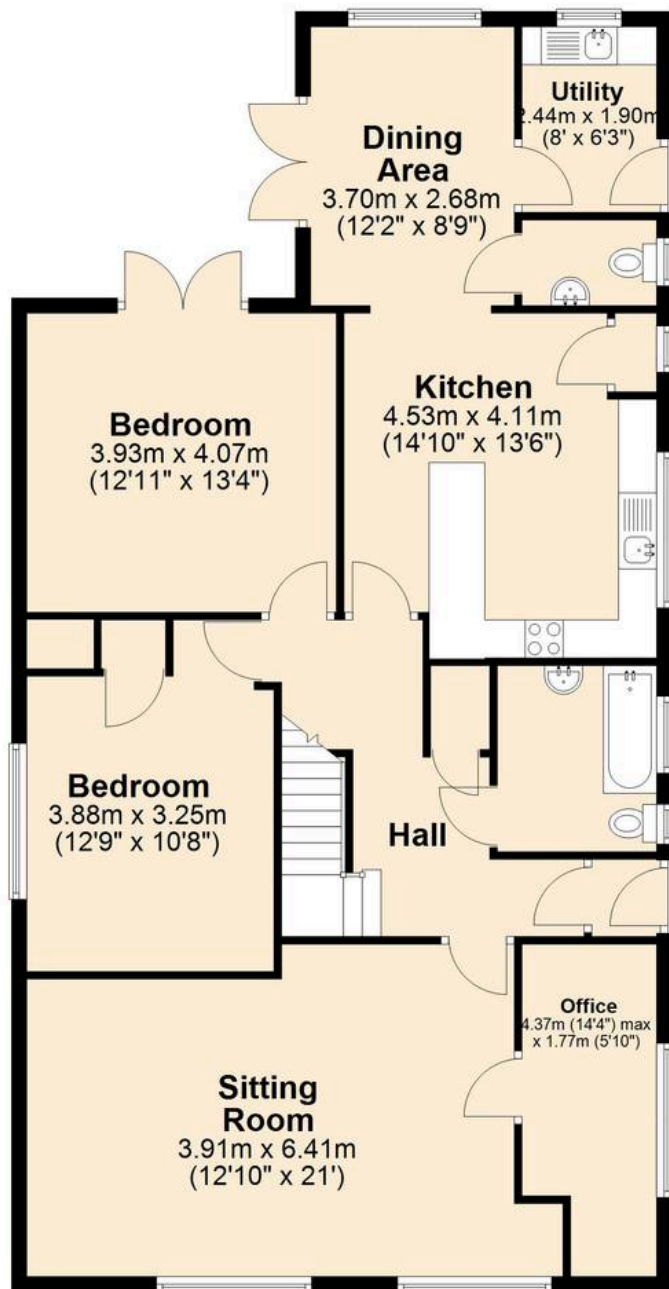






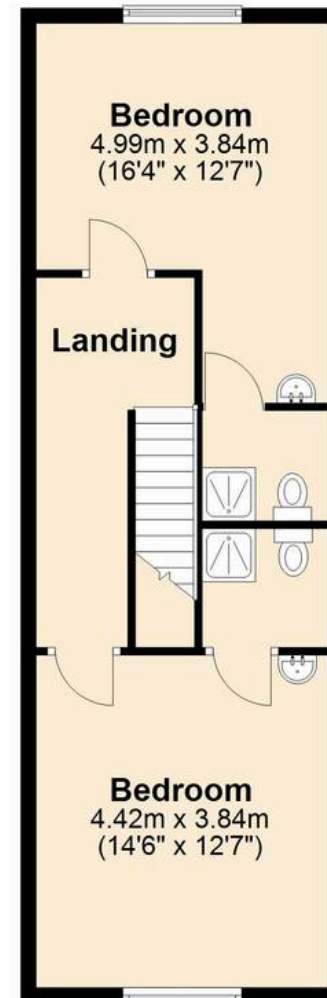
Ground Floor

Approx. 122.4 sq. metres (1317.2 sq. feet)



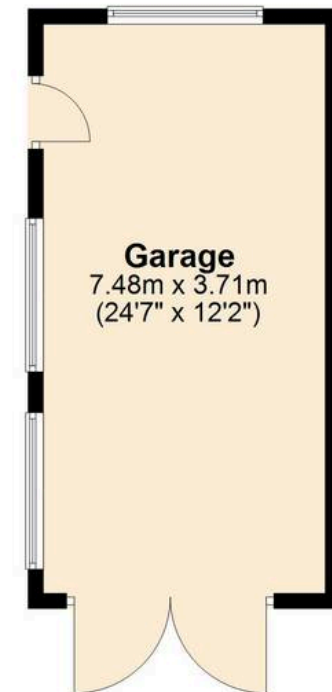
First Floor

Approx. 48.9 sq. metres (525.9 sq. feet)



Outbuilding

Approx. 27.7 sq. metres (298.4 sq. feet)



Total area: approx. 199.0 sq. metres (2141.5 sq. feet)



Skippers Estate Agents Cheriton/Folkestone

30 High Street, Cheriton - CT19 4ET

01303 279955

cheriton@skippers-ea.co.uk

skippers-ea.co.uk

Skippers

