



Sheenam Woodchurch Road, Shadoxhurst
£710,000

Sheenam Woodchurch Road

Shadoxhurst, Ashford

This beautifully presented five-bedroom home in Shadoxhurst offers flexible family living, with two ground-floor bedrooms, three en-suite bathrooms, and a sleek, modern kitchen with central island. The open-plan living area opens via bi-folding doors to the south-facing garden, complemented by under-floor heating. With a generous driveway, large garage, cosy snug, and excellent village amenities nearby, this home perfectly combines style, comfort, and practicality.

Council Tax band: D

Tenure: Freehold

- Five beautifully presented bedrooms, with two on the ground floor allowing flexible & multi-generational living
- Three en-suite bathrooms providing privacy and convenience for the family
- Impressive open-plan living space to the rear with under-floor heating, flooded with natural light
- Wide bi-folding doors leading from the living area to the south-facing garden, perfect for entertaining
- Sleek, modern kitchen with central island, ample workspace, and generous storage
- Under-floor heating to all bathrooms for year-round comfort
- Separate utility room, cloakroom, and handy coat cupboard for practical family living
- Cosy snug/home office, ideal for work, relaxation, or movie nights
- Generous driveway and large garage (over 7m in length) offering ample parking and storage
- Fantastic south-facing garden, providing plenty of space for children to play and for adults to relax or



Hallway

Snug/Office

9' 2" x 8' 7" (2.80m x 2.62m)

Bedroom 4

8' 0" x 12' 0" (2.44m x 3.65m)

En-suite

Bedroom 5

9' 6" x 12' 0" (2.90m x 3.65m)

Utility Room

10' 6" x 6' 6" (3.19m x 1.98m)

Wc

Open Plan Living Room

29' 3" x 20' 0" (8.91m x 6.10m)

Kitchen

29' 3" x 20' 0" (8.91m x 6.10m)

Landing

Bedroom 1

16' 11" x 15' 3" (5.16m x 4.66m)

En-suite

Bedroom 2

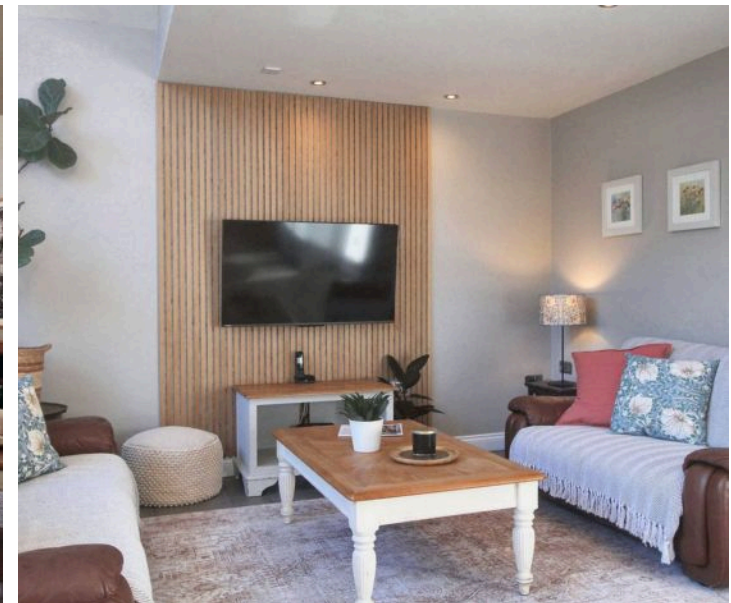
14' 3" x 17' 2" (4.34m x 5.22m)

En-suite

Bedroom 3

7' 7" x 16' 10" (2.31m x 5.14m)

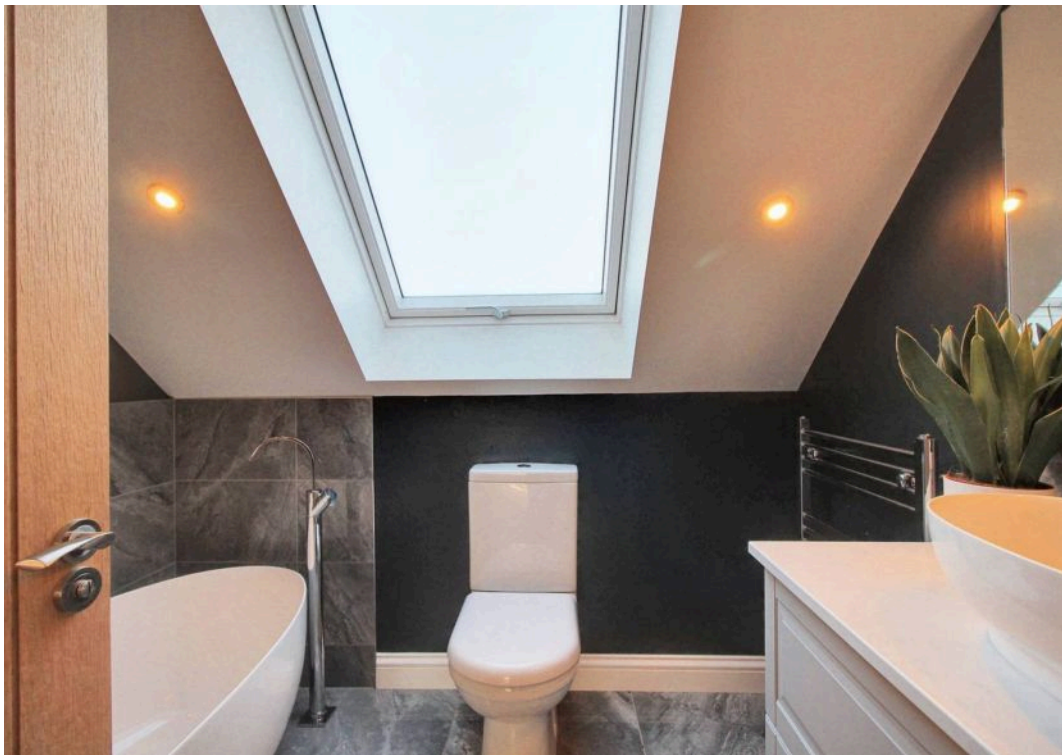
Bathroom











Ground Floor

Approx. 133.4 sq. metres (1436.1 sq. feet)



First Floor

Approx. 70.6 sq. metres (759.8 sq. feet)



Total area: approx. 204.0 sq. metres (2195.9 sq. feet)



Skippers Estate Agents – Ashford

5 Kings Parade High Street, Ashford – TN24 8TA

01233 632383

ashford@skippers-ea.co.uk

skippers-ea.co.uk



