



125 Drummond Grove, Willesborough

Guide Price £165,000

Skippers

125 Drummond Grove

Willesborough, Ashford

A well-presented two bedroom, two bathroom apartment offering a bright open plan living space, modern fitted kitchen, built-in wardrobes to both bedrooms, en-suite to the principal bedroom
Council Tax band: B

Tenure: Leasehold

- Two Bedroom Top Floor Apartment
- Open plan living area
- Modern kitchen with integrated appliances
- Ensuite bathroom
- Built-in wardrobes
- Modern bathroom with walk-in shower
- Gas Central Heating
- Excellent Commuter Links
- Off-road parking



Entrance Hallway

A welcoming entrance hall fitted with a security intercom system and housing the electric fuse box. Fitted carpet runs through the hallway and continues into the lounge. Doors lead to all principal rooms and to two useful storage cupboards, one of which also houses the boiler.

Sitting Room

14' 1" x 21' 0" (4.30m x 6.40m)

A well proportioned living space featuring a generous recess that allows for flexible furniture layout. Double glazed window to the front aspect, two radiators, fitted carpet, television point and telephone point. Open access through to the kitchen.

Bedroom One

6' 11" x 13' 5" (2.10m x 4.10m)

A comfortable double bedroom with double glazed UPVC window to the front, fitted carpet, radiator and television point. Door through to En suite.

En-suite

4' 11" x 7' 7" (1.50m x 2.30m)

Fitted with a modern white suite including a shower cubicle, radiator and vinyl flooring.

Bedroom Two

9' 2" x 16' 9" (2.80m x 5.10m)

Another well sized bedroom with double-glazed UPVC window to the front, fitted carpet and radiator.

Kitchen

7' 10" x 9' 10" (2.40m x 3.00m)

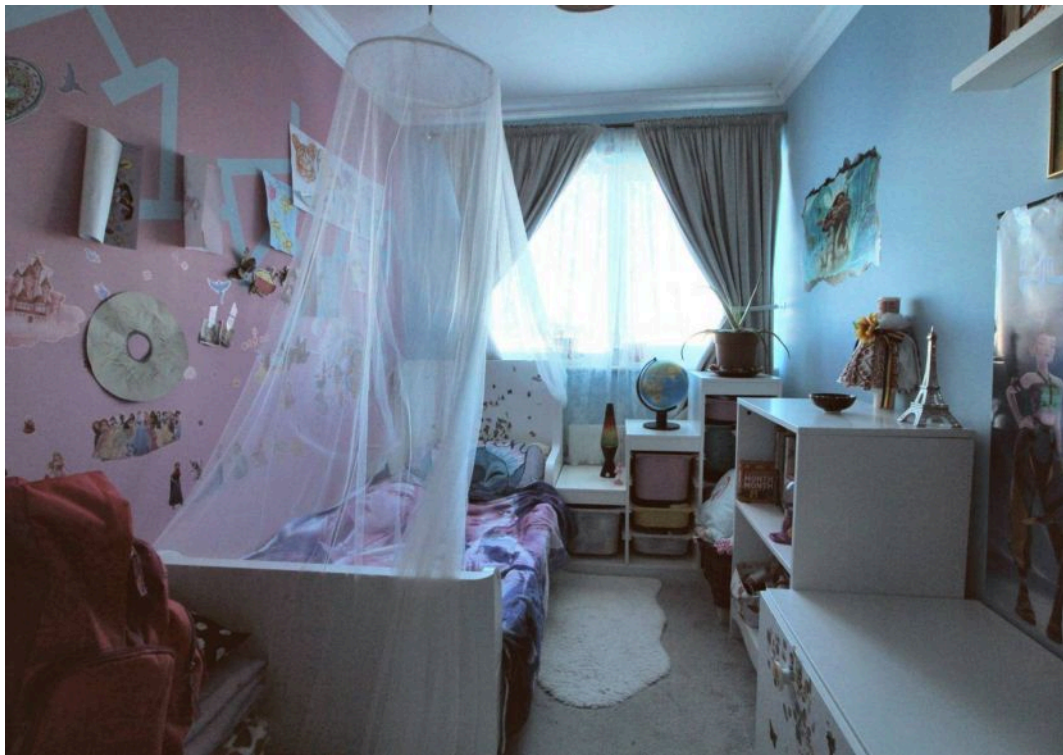
Fitted with a range of wall and base units complemented by roll-top work surfaces. Incorporating a 1½ bowl stainless steel sink with mixer tap, integral electric oven, electric hob with extractor above, radiator and vinyl flooring. Space is provided for a fridge/freezer along with plumbing for a washing machine.

Bathroom

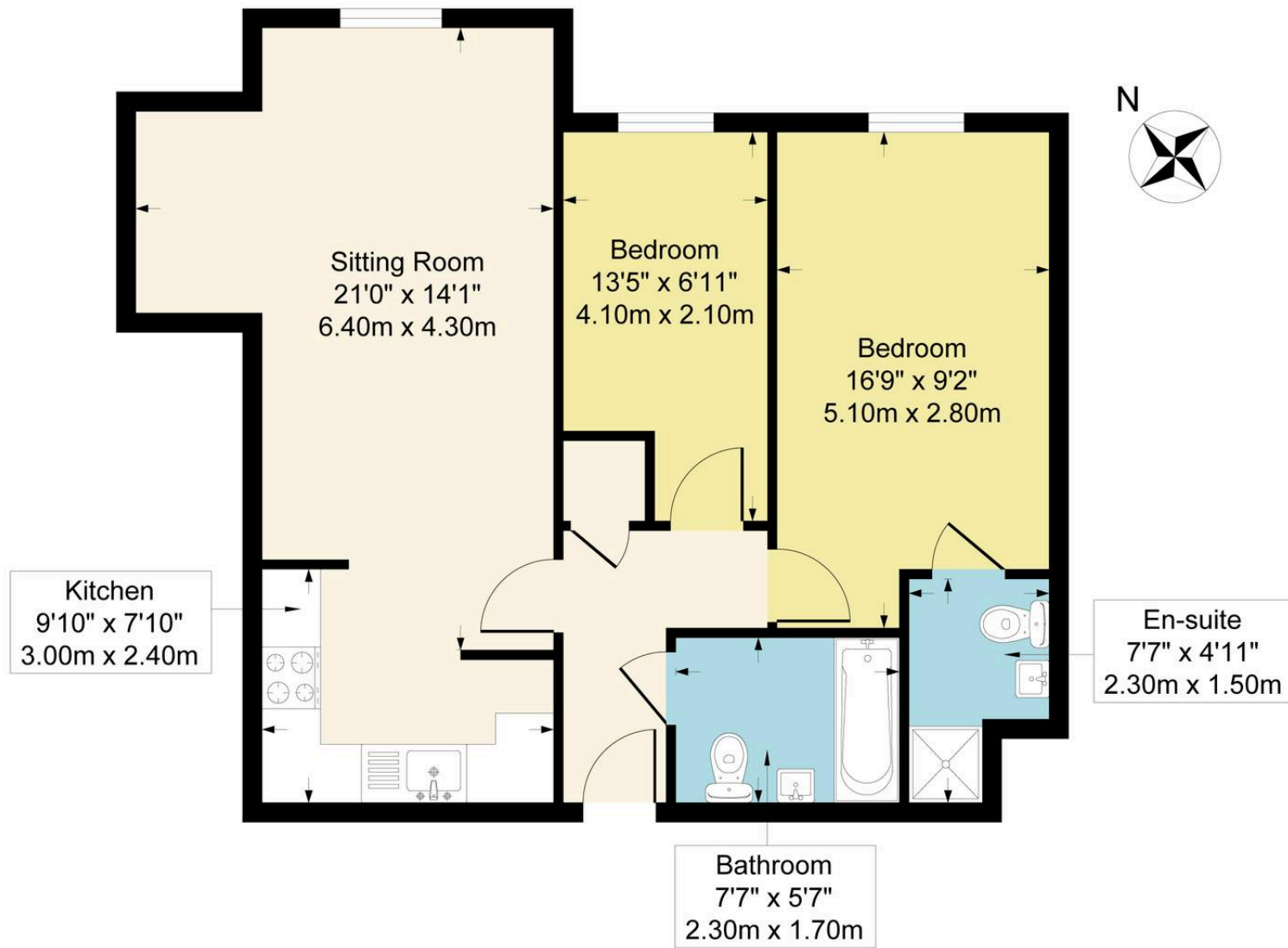
5' 7" x 7' 7" (1.70m x 2.30m)

A modern white suite comprising a bath with shower attachment, radiator, towel rail and vinyl flooring.





Approximate Gross Internal Area = 631 sq ft - 59 sq m



Although every attempt has been made to ensure accuracy, all measurements are approximate.
This floorplan is for illustrative purposes only and not to scale.
Measured in accordance with RICS Standards.



Skippers Estate Agents – Ashford

5 Kings Parade High Street, Ashford – TN24 8TA

01233 632383

ashford@skippers-ea.co.uk

skippers-ea.co.uk

Skippers

