



55 Lancaster Close, Hamstreet

Guide Price **£400,000**

Skippers

55 Lancaster Close

Hamstreet, Ashford

Immaculately Presented Four-Bedroom Family Home in the village of Hamstreet We are delighted to present this beautifully appointed four-bedroom property with parking.
Council Tax band: E

Tenure: Freehold

- Guide Price £400,000 to £420,000
- Chain Free
- Four Bedrooms
- Village Location
- Off-road parking for two cars
- Close to Hamstreet primary school
- Modern kitchen with integrated appliances
- Kitchen Diner
- Spacious bedrooms with built-in wardrobes
- En-suite bathroom
- Guest Cloakroom



Hallway

Radiator, thermostat under stair storage, guest cloakroom. Stairs leading to upstairs accommodation.

Lounge

11' 6" x 15' 5" (3.50m x 4.70m)

Fitted carpet. Georgian style window to the front, radiator.

Kitchen/Diner

11' 6" x 18' 4" (3.50m x 5.60m)

Wooden flooring. Matching wall and base units. Granite work surfaces. Space and plumbing for dishwasher. Utility cupboard with space and plumbing for washing machine and tumble dryer. Integrated fridge freezer. Electric oven and hob. Stainless steel sink with mixer tap. French doors leading to the garden.

Master Bedroom

20' 0" x 12' 6" (6.10m x 3.80m)

Master bedroom benefiting from En-suite. Window to the front of the property in addition to the Velux window to the rear. Radiator. Door leading to En-suite

En-suite

Part tiled. Low level w.c and hand basin. Shower. Velux window.

Bedroom Two

10' 2" x 13' 5" (3.10m x 4.10m)

Fitted carpet, radiator window overlooking the garden.

Bedroom Three

10' 2" x 11' 10" (3.10m x 3.60m)

Fitted carpet, radiator. Window to the front.

Bathroom

5' 7" x 8' 2" (1.70m x 2.50m)

Part tiled. Low level wc hand basin. Bath with shower. Window overlooking the front of the property.

Bedroom Four

10' 10" x 8' 2" (3.30m x 2.50m)

Fitted carpet, radiator, window overlooking the garden.



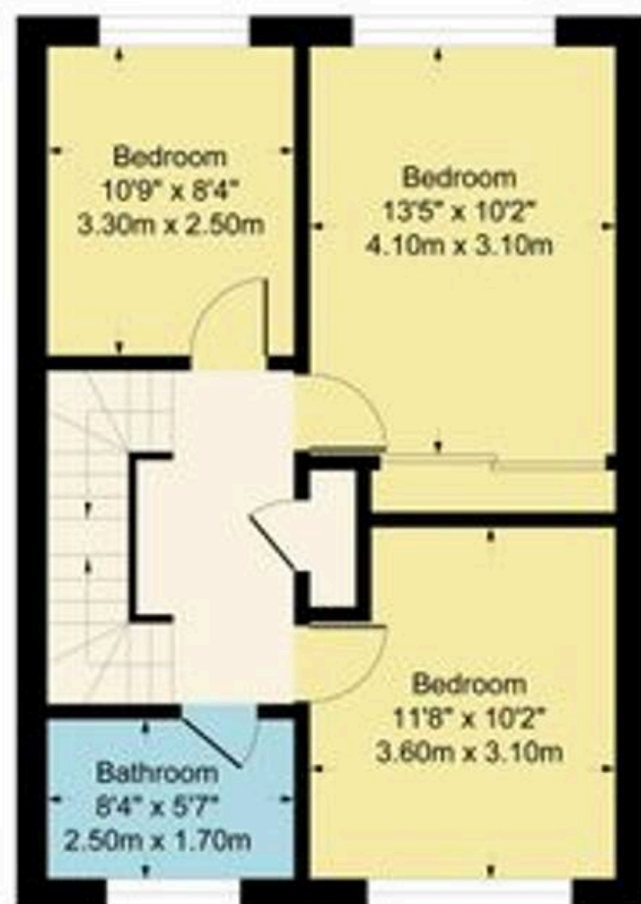




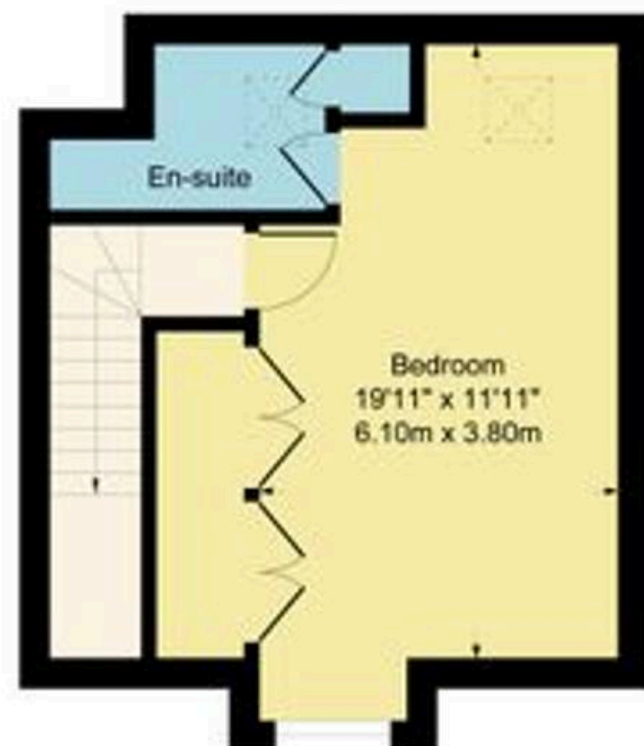
Approximate Gross Internal Area
1354 sq ft - 127 sq m



Ground Floor



First Floor



Second Floor

Although every attempt has been made to ensure accuracy, all measurements are approximate.
This floorplan is for illustrative purposes only and not to scale.
Measured in accordance with RICS Standards.



Skippers Estate Agents – Ashford

5 Kings Parade High Street, Ashford – TN24 8TA

01233 632383

ashford@skippers-ea.co.uk

skippers-ea.co.uk



