



**8, Mulberry Close,, St Marys Bay**

Guide Price **£390,000**

**Skippers**

## 8, Mulberry Close,

St Marys Bay, Romney Marsh

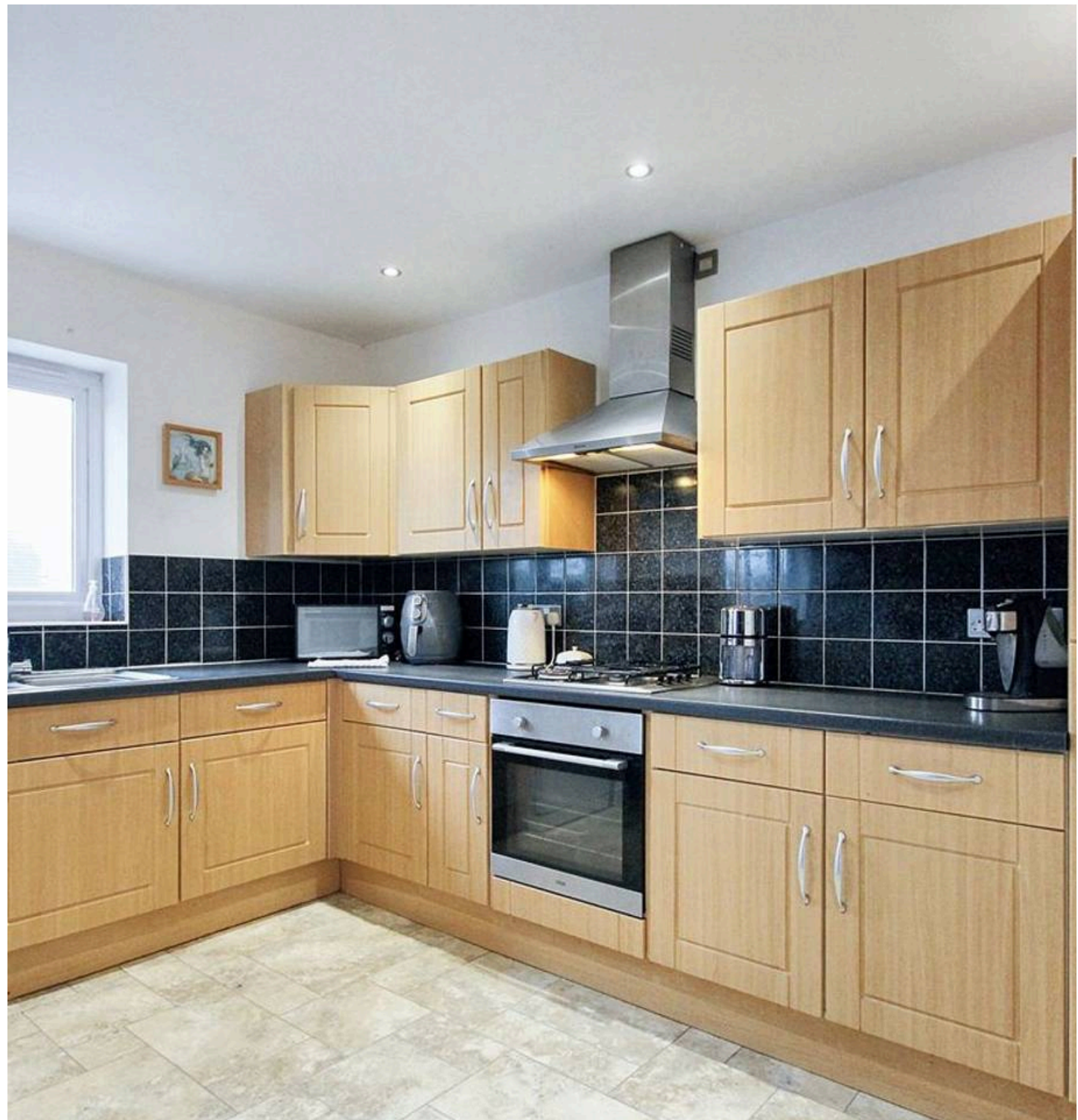
- Guide Price £390,000 - £400,000
- Detached House
- Five Bedrooms
- Large Open Plan Living Area
- Short Walk To Beach
- Central Village Location
- Double Bedrooms With Annex
- EPC Rating "C"



## 8, Mulberry Close,

St Marys Bay, Romney Marsh

- Guide Price £390,000 - £400,000
- Detached House
- Five Bedrooms
- Large Open Plan Living Area
- Short Walk To Beach
- Central Village Location
- Double Bedrooms With Annex
- EPC Rating "C"





Nestled in the heart of the picturesque village and just a stone's throw away from the sea, this stunning 5-bedroom detached townhouse offers a unique blend of modern comfort and coastal charm. Boasting a ground floor annexe that adds versatility to the living space, this property is ideal for multigenerational living or as a private home office. The large open plan living area is flooded with natural light, creating a welcoming ambience for family gatherings and entertaining guests. The master bedroom features a luxurious en-suite bathroom, while all double bedrooms provide ample space and comfort for relaxation. Situated in a central village location, this home offers both convenience and tranquillity, with local amenities and shops within easy reach.

Outside, the property features a well-manicured garden, perfect for enjoying the fresh sea breeze and al-fresco dining on warm summer evenings. The spacious patio area provides an ideal spot for outdoor entertaining, while the garage and driveway offer ample parking space for multiple vehicles. With a seamless blend of indoor and outdoor living spaces, this property offers a rare opportunity to experience a coastal lifestyle in a vibrant village setting. Don't miss the chance to make this beautiful house your new home. Contact us today to schedule a viewing and discover all the possibilities that this property has to offer.

- Guide Price £390,000 - £400,000
- Detached House
- Five Bedrooms
- Large Open Plan Living Area
- Short Walk To Beach
- Central Village Location
- Double Bedrooms With Annex
- EPC Rating "C"

**Entrance Hall**

**Wc**

**Lounge**

10' 11" x 11' 1" (3.32m x 3.38m)

**Bedroom**

11' 0" x 10' 1" (3.35m x 3.07m)

**First Floor Landing**

**Open Plan Living Area**

20' 4" x 21' 2" (6.21m x 6.46m)

**Bedroom**

16' 0" x 11' 0" (4.88m x 3.35m)

**En-Suite**

**Walk In Wardrobe**

**Second Floor Landing**

**Bedroom**

11' 1" x 12' 6" (3.39m x 3.82m)

**Bedroom**

13' 6" x 12' 6" (4.11m x 3.82m)

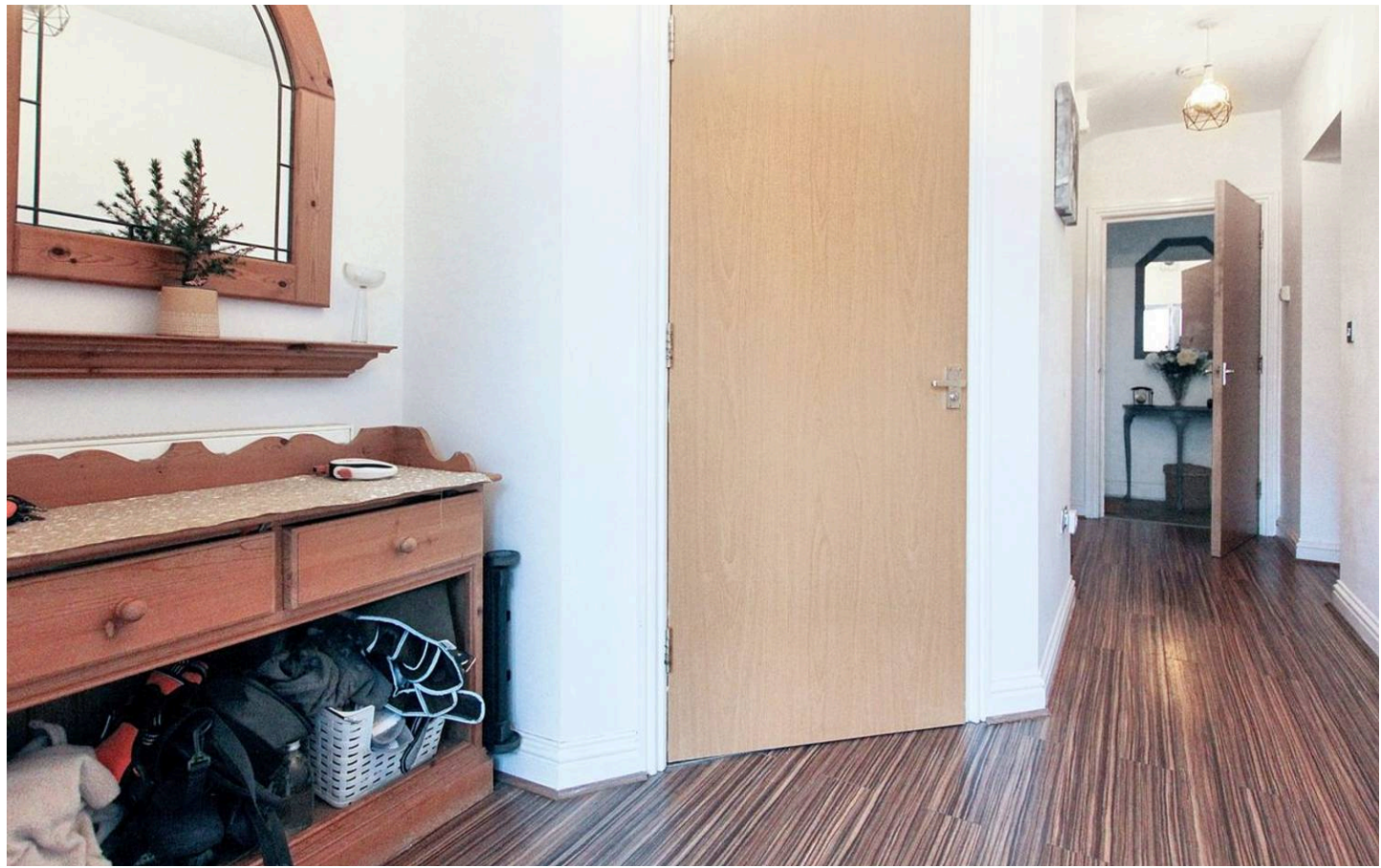
**Bedroom**

10' 0" x 8' 4" (3.06m x 2.54m)

**Bathroom**

7' 8" x 8' 3" (2.34m x 2.52m)

**Integral Garage**



**FRONT GARDEN**

**REAR GARDEN**

**GARAGE**

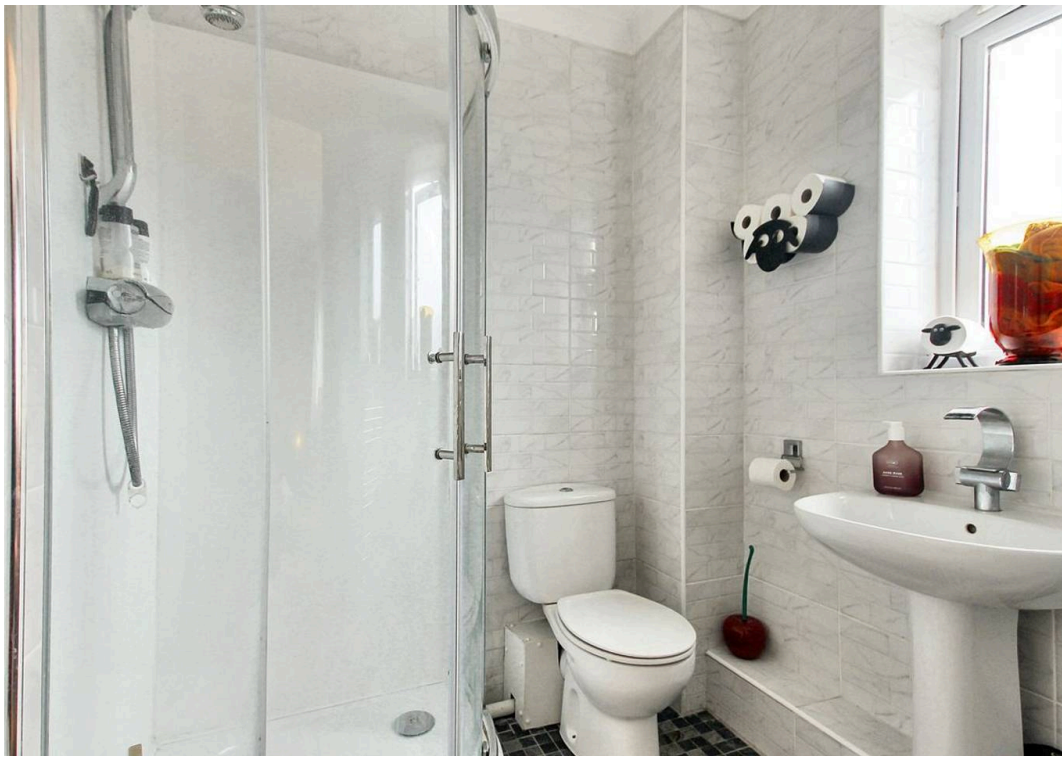
Single Garage

**DRIVEWAY**

2 Parking Spaces

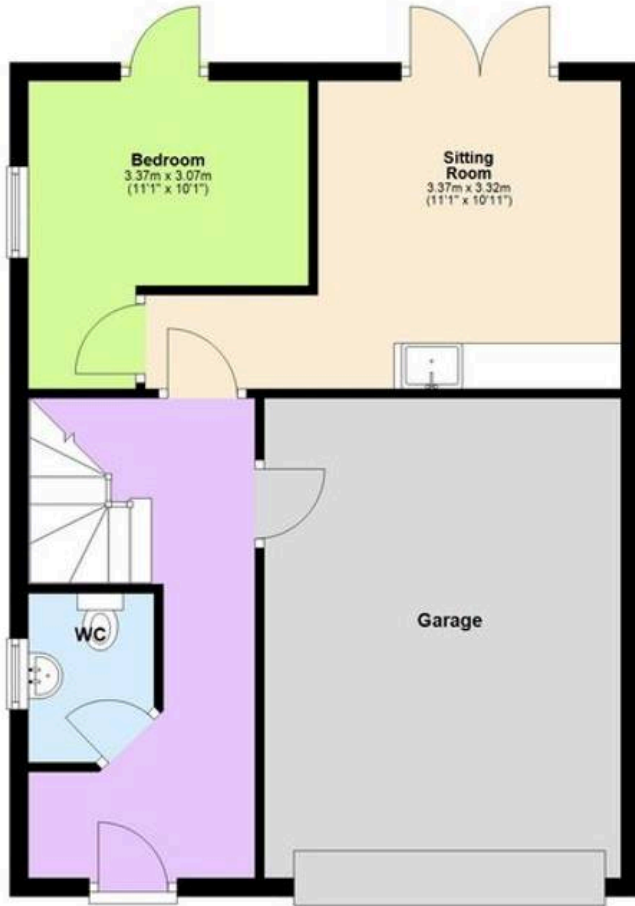






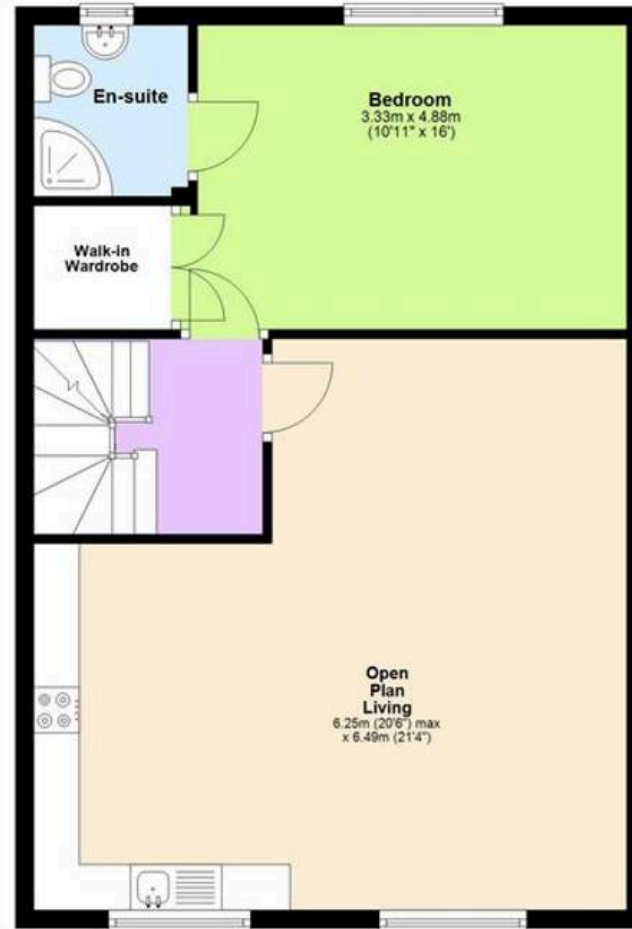
### Ground Floor

Approx. 56.6 sq. metres (609.6 sq. feet)



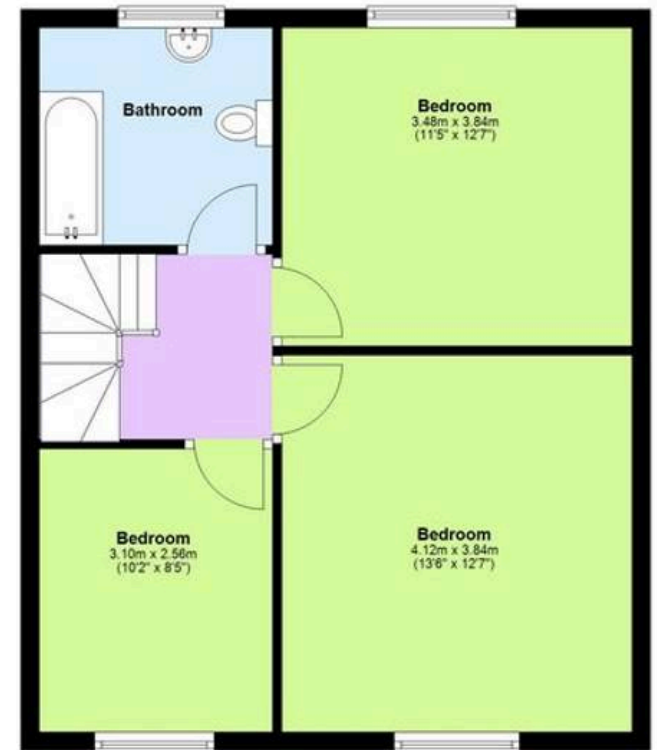
### First Floor

Approx. 62.9 sq. metres (676.7 sq. feet)



### Second Floor

Approx. 50.0 sq. metres (538.6 sq. feet)





## Skippers Estate Agents Cheriton/Folkestone

30 High Street, Cheriton - CT19 4ET

01303 279955

[cheriton@skippers-ea.co.uk](mailto:cheriton@skippers-ea.co.uk)

[skippers-ea.co.uk](http://skippers-ea.co.uk)

Skippers