



28 Vincent Place, Kennington

Guide Price £325,000

Skippers

28 Vincent Place

Kennington, Ashford

Well presented home with modern kitchen, dining area, bright living room, flexible bedrooms, stylish bathroom, and rear garden with access, ideal for families or home working. Ready to move in.
Council Tax band: D

Tenure: Freehold

- Situated within Little Burton, Kennington
- Semi detached
- Three Bedroom
- Two reception rooms
- Double driveway and off-road parking
- Open plan living and dining areas
- Modern kitchen with integrated appliances
- Spacious private garden with decking
- Contemporary bathroom with bath and shower



Kitchen

7' 4" x 8' 11" (2.24m x 2.72m)

A modern, well planned kitchen fitted with a range of wall and base units providing good storage and worktop space. A window to the side aspect allows for natural light and provides a pleasant outlook, while the neutral finish gives the room a clean, contemporary feel.

Dining room

8' 1" x 8' 11" (2.46m x 2.72m)

The room benefits from good natural light via French doors opening to the rear garden. There is ample room for a family dining table, while the open flow through to the kitchen and lounge makes this a practical and sociable layout.

Sitting room

12' 6" x 13' 3" (3.81m x 4.05m)

The room benefits from a front facing window allowing plenty of natural light, while the layout easily accommodates a range of seating arrangements. Neutral décor and fitted carpet create a calm, modern feel, with good wall space for furniture placement. Positioned conveniently off the dining area, this is a practical and welcoming reception room suited to both relaxing and entertaining.





Bedroom 1

10' 2" x 12' 0" (3.10m x 3.66m)

Window to the front, radiator and fitted carpet.

Bathroom

5' 3" x 8' 11" (1.60m x 2.72m)

A modern, well-presented family bathroom fitted with a white suite comprising a panelled bath with shower over, wash hand basin and WC. Window to the rear provides natural light and ventilation.

Bedroom 2

7' 7" x 9' 5" (2.30m x 2.87m)

Window to the rear, fitted carpet and radiator.

Bedroom 3

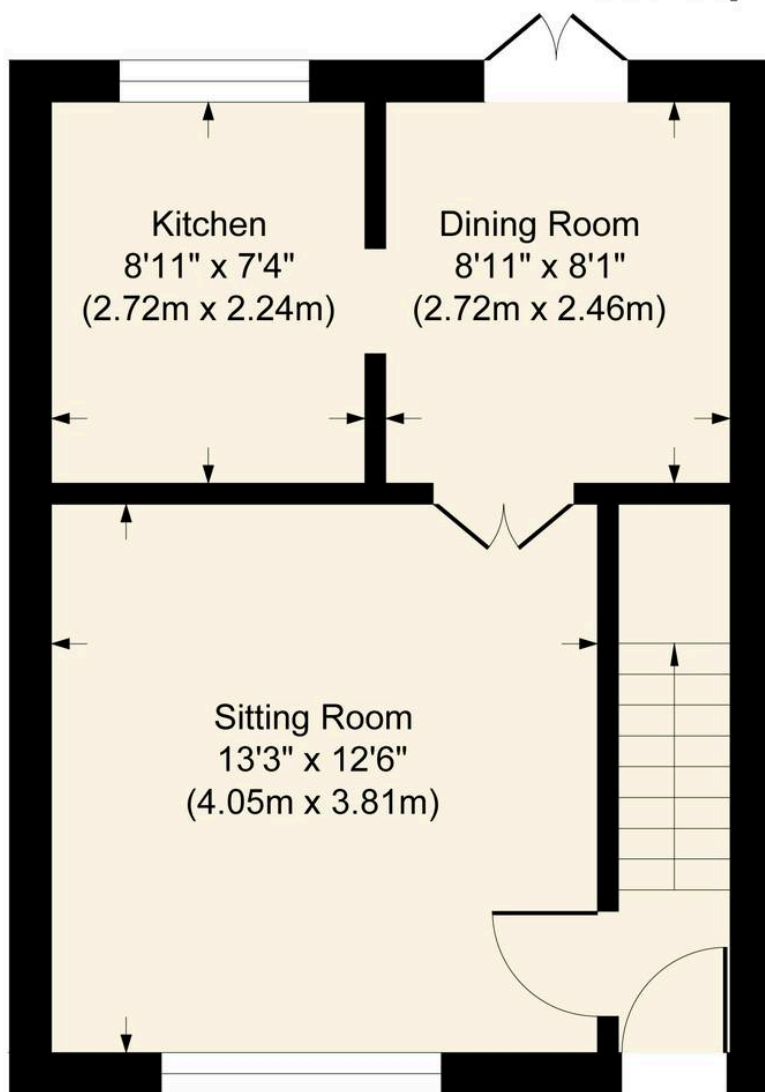
6' 5" x 7' 10" (1.95m x 2.40m)

Window to the rear, radiator and fitted carpet.

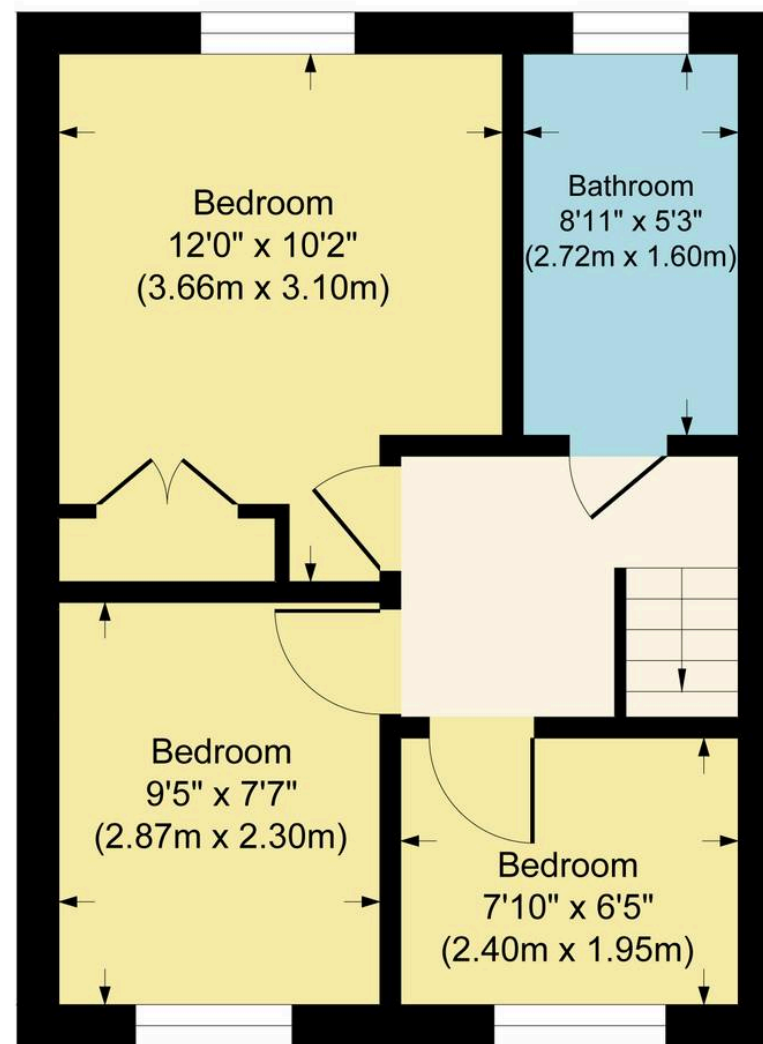




Approximate Gross Internal Area
355 sq ft - 33 sq m



Ground Floor



First Floor

Although every attempt has been made to ensure accuracy, all measurements are approximate.
This floorplan is for illustrative purposes only and not to scale.
Measured in accordance with RICS Standards.



Skippers Estate Agents – Ashford

5 Kings Parade High Street, Ashford – TN24 8TA

01233 632383

ashford@skippers-ea.co.uk

skippers-ea.co.uk



