



9 Fostall Green, Ashford
£270,000

Skippers

9 Fostall Green

Ashford, Ashford

Offered with no onward chain, this three-bedroom home in South Ashford offers excellent potential for families, first-time buyers, or investors. Featuring a generous rear garden and well-proportioned accommodation, it's a great opportunity to make your mark.

Council Tax band: B

Tenure: Freehold

- No onward chain
- Three-bedroom terraced home
- Ideal for first-time buyers, families, or investors
- Spacious lounge/diner overlooking the garden
- Kitchen to the front
- Useful utility area with cloakroom potential
- Three bedrooms with built-in storage
- Modern shower room
- Generous rear garden
- Convenient South Ashford location close to amenities and transport links



Hallway

Part glazed uPVC door to the front, doors to each room and fitted carpet.

Lounge / Diner

16' 2" x 14' 6" (4.93m x 4.42m)

Window to the rear, door to rear hallway, feature fireplace with inset electric fire, radiator and fitted carpet.

Kitchen

10' 0" x 9' 2" (3.06m x 2.79m)

Window to the front, built-in Pantry type cupboard, radiator, part wall tiling and tiled floor. A range of fitted units to the wall and floor with worksurfaces over, inset 1.5 bowl stainless steel sink/drain, spaces for free-standing gas cooker and fridge/freezer.

Utility Room

Window to the front, plumbing and space for washing machine and tumble dryer.

Rear Lobby

Part glazed uPVC door to the garden and stairs to the first floor.

Landing

Doors to each room, loft access, carpet to the stairs and landing.

Bedroom 1

13' 1" x 12' 9" (3.99m x 3.88m)

Window to the rear, built-in wardrobe and cupboard, radiator and carpet.

Bedroom 2

10' 10" x 8' 4" (3.29m x 2.53m)

Window to the front, built-in wardrobe, wall mounted central heating combi boiler, radiator and carpet.

Bedroom 3

8' 11" x 8' 11" (2.72m x 2.72m)

Window to the rear, built-in cupboard and carpet.

Bathroom

8' 2" x 5' 7" (2.48m x 1.69m)

Windows to the front, large rectangular wall-in shower enclosure with thermostatic rainfall shower, WC, wash basin, towel radiator, bathroom wall panelling and LVT flooring.

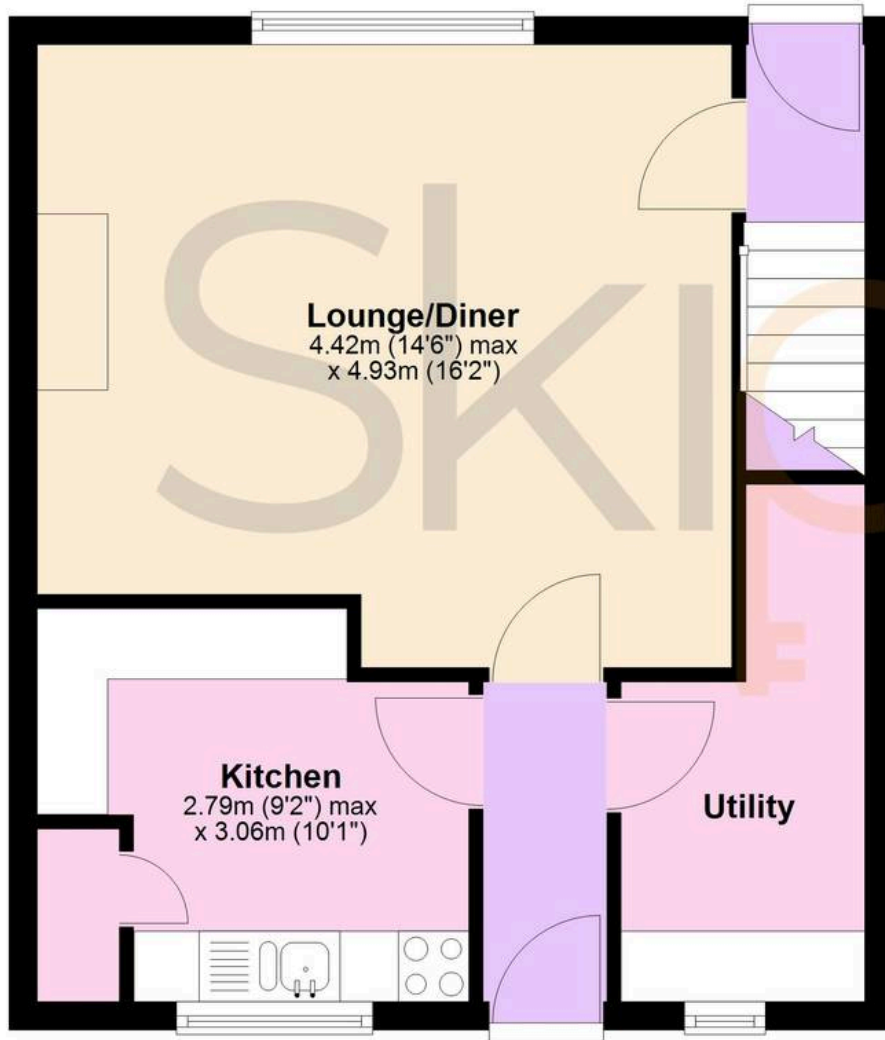






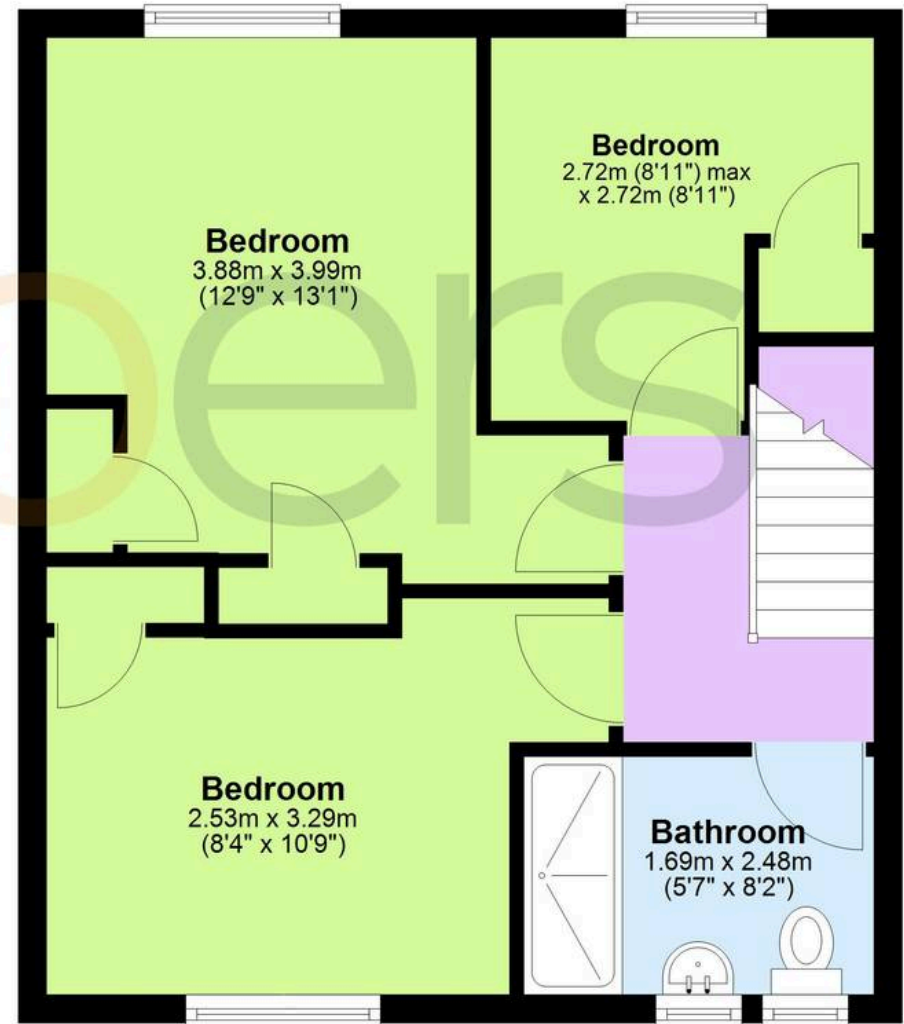
Ground Floor

Approx. 39.9 sq. metres (429.2 sq. feet)



First Floor

Approx. 39.9 sq. metres (429.6 sq. feet)



Total area: approx. 79.8 sq. metres (858.8 sq. feet)



Skippers Estate Agents – Ashford

5 Kings Parade High Street, Ashford – TN24 8TA

01233 632383

ashford@skippers-ea.co.uk

skippers-ea.co.uk

