



21 Capel gardens, Ruckinge
£175,000

Skippers

21 Capel gardens

Ruckinge

A beautifully presented two-bedroom park home located on the popular residential site of Capel Gardens, enjoying a generous plot with gardens to the sides and rear backing onto woodland. The home offers spacious accommodation including a living room, kitchen with dining area and utility, two double bedrooms with fitted furniture, en-suite to the main bedroom, and a family bathroom. Conveniently situated within easy reach of Hamstreet and just a short drive from Ashford, the property also benefits from ample driveway parking for several vehicles.

Council Tax band: TBD

Tenure: Leasehold

- Beautifully presented two-bedroom park home
- Located on the residential site of Capel Gardens - Over 50s only
- Generous plot with gardens to the side and rear
- Attractive woodland backdrop providing a peaceful outlook
- Spacious living room
- Kitchen with dining area and separate utility space
- Two double bedrooms, both with fitted furniture
- En-suite shower room to the main bedroom plus family bathroom
- Driveway parking for 2-3 cars with additional space available
- Within easy reach of Hamstreet and the amenities of Ashford



Hallway

Partly glazed uPVC door to the front, storage cupboard, doors to all rooms, radiator and fitted carpet.

Living Room

11' 1" x 18' 1" (3.38m x 5.51m)

Dual aspect with window to the front and doors leading out to the garden, feature electric fire, radiator, air conditioning and fitted carpet.

Kitchen

8' 0" x 7' 10" (2.44m x 2.40m)

Fitted kitchen comprising wall and base units with worksurfaces over, inset 1.5 bowl sink/drain, built-in electric oven/grill, 4-zone hob with extractor over & dishwasher. Tiled splashback and vinyl flooring. Window to the side.

Utility Room

Door leading to the outside, central heating boiler, built-in fridge/freezer, built-in washing machine, space for tumble dryer, radiator and vinyl flooring.

Dining room

6' 7" x 8' 6" (2.00m x 2.58m)

Windows to the rear overlooking the garden, through to the kitchen, radiator, air conditioning and fitted carpet.

Bedroom 1

7' 5" x 9' 4" (2.26m x 2.85m)

Windows to the side, built-in mirror fronted wardrobes, radiator, air conditioning and fitted carpet.

En-suite

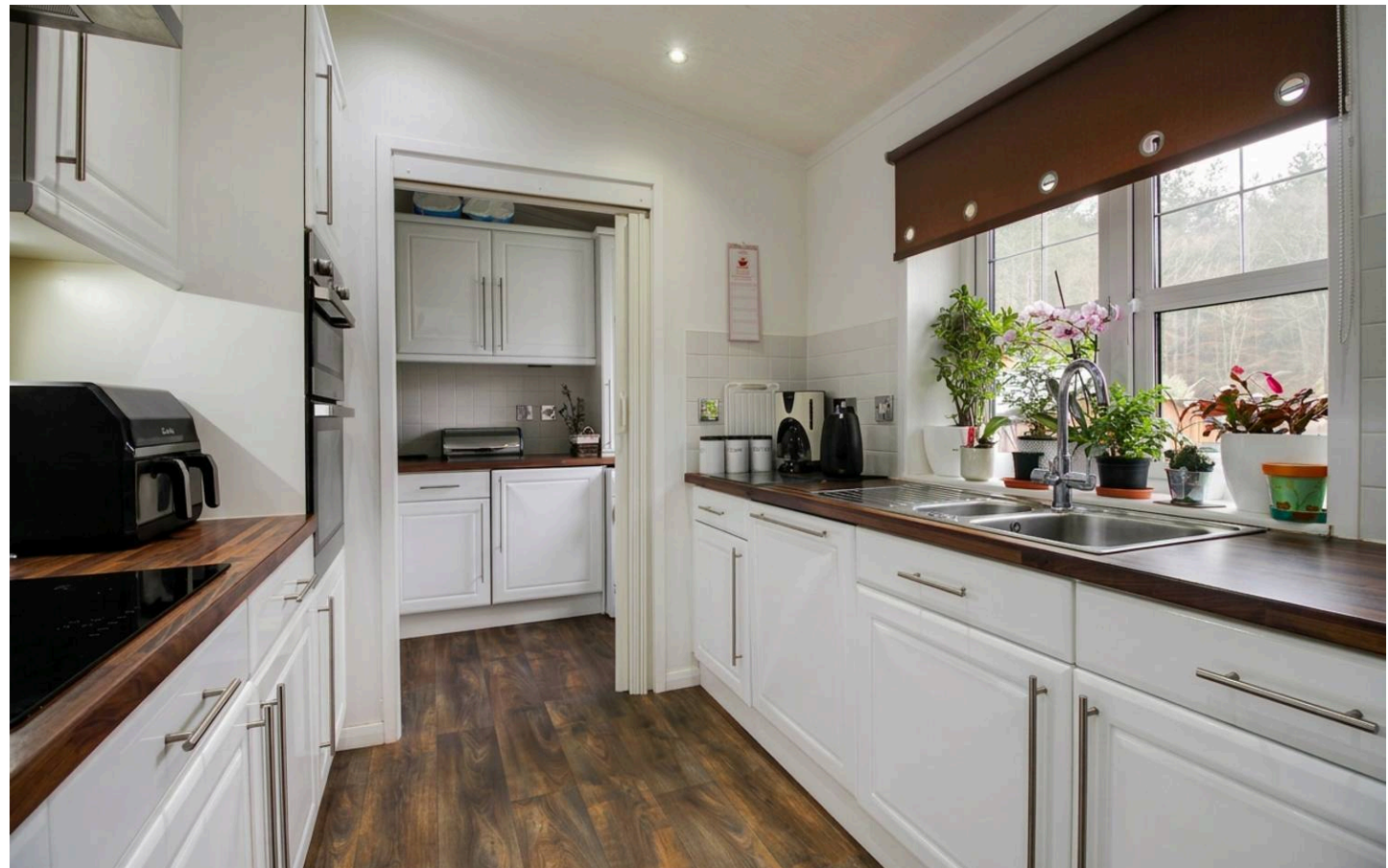
Window to the side, large shower enclosure with thermostatic shower and sliding door, WC, wash basin with storage below and vanity station, shaver socket, extractor fan, radiator, tiled walls and flooring.

Bedroom 2

9' 5" x 10' 4" (2.87m x 3.16m)

Window to the front, built-in wardrobes, radiator and fitted carpet.

Bathroom





Hallway

Partly glazed uPVC door to the front, storage cupboard, doors to all rooms, radiator and fitted carpet.

Living Room

11' 1" x 18' 1" (3.38m x 5.51m)

Dual aspect with window to the front and doors leading out to the garden, feature electric fire, radiator, air conditioning and fitted carpet.

Kitchen

8' 0" x 7' 10" (2.44m x 2.40m)

Fitted kitchen comprising wall and base units with worksurfaces over, inset 1.5 bowl sink/drain, built-in electric oven/grill, 4-zone hob with extractor over & dishwasher. Tiled splashback and vinyl flooring. Window to the side.

Utility Room

Door leading to the outside, central heating boiler, built-in fridge/freezer, built-in washing machine, space for tumble dryer, radiator and vinyl flooring.

Dining room

6' 7" x 8' 6" (2.00m x 2.58m)

Windows to the rear overlooking the garden, through to the kitchen, radiator, air conditioning and fitted carpet.

Bedroom 1

7' 5" x 9' 4" (2.26m x 2.85m)

Windows to the side, built-in mirror fronted wardrobes, radiator, air conditioning and fitted carpet.

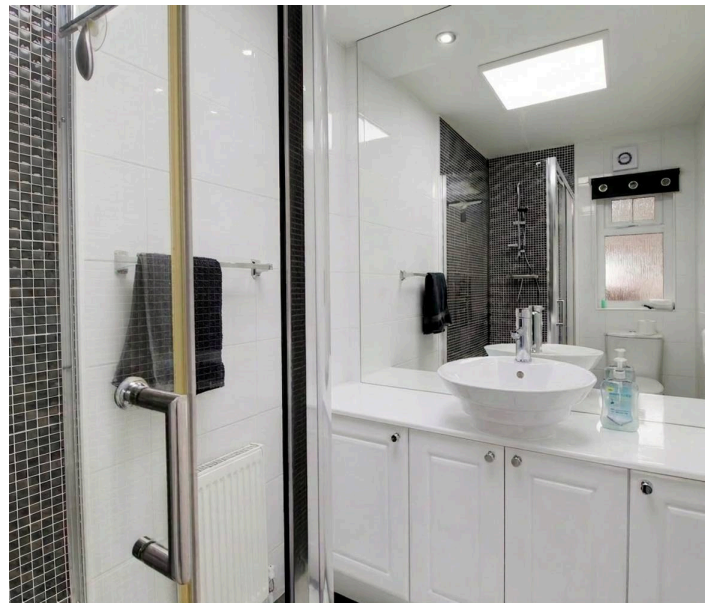
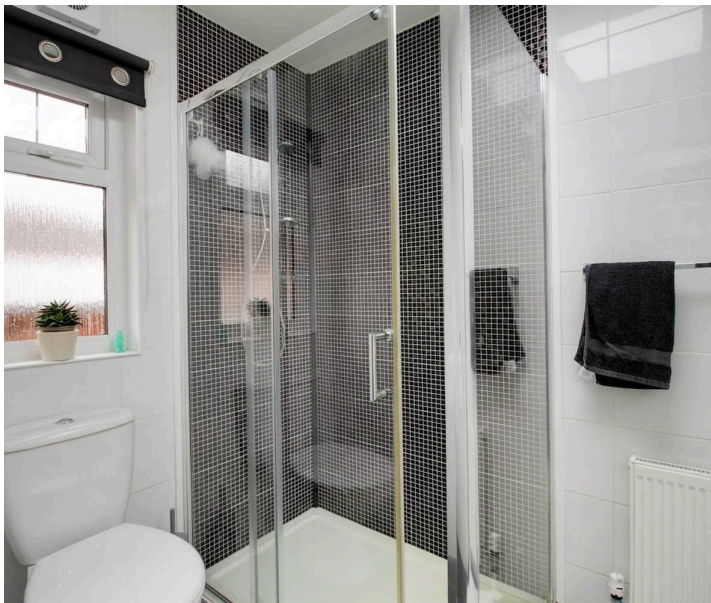
En-suite

Window to the side, large shower enclosure with thermostatic shower and sliding door, WC, wash basin with storage below and vanity station, shaver socket, extractor fan, radiator, tiled walls and flooring.

Bedroom 2

9' 5" x 10' 4" (2.87m x 3.16m)

Window to the front, built-in wardrobes, radiator and fitted carpet.







Ground Floor

Approx. 85.6 sq. metres (920.9 sq. feet)



Total area: approx. 85.6 sq. metres (920.9 sq. feet)



Skippers Estate Agents – Ashford

5 Kings Parade High Street, Ashford – TN24 8TA

01233 632383

ashford@skippers-ea.co.uk

skippers-ea.co.uk



