



Thyme Cottage Roman Road, Aldington

Offers in Region of £395,000

Skippers

Thyme Cottage Roman Road

Aldington, Ashford

A charming modern cottage in the heart of Aldington, offering three well-proportioned bedrooms, a stylish kitchen/breakfast room and a south-facing garden. Complete with garage, parking and farmland views, it perfectly blends village living with modern comfort.

Council Tax band: D

Tenure: Freehold

- Three-bedroom modern cottage
- Sought-after village location in Aldington
- Generous and well-proportioned accommodation
- Modern kitchen/breakfast room with integrated appliances
- Spacious living room overlooking the garden
- Downstairs cloakroom
- En-suite to principal bedroom
- South-facing, low-maintenance rear garden
- Garage and allocated parking to the rear
- Attractive farmland views beyond the garden



Hallway

Wooden door to the front, stairs to the first floor with under-stairs storage cupboard, doors to each room, radiator and tiled flooring.

Cloakroom

Comprising a WC, wash basin, extractor fan, radiator and tiled flooring.

Kitchen/Diner

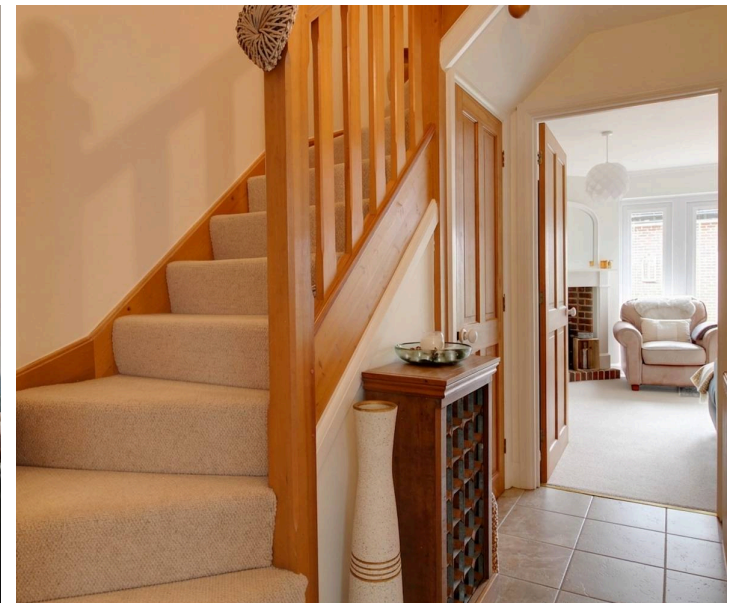
15' 8" x 8' 9" (4.78m x 2.67m)

Bay window to the front, radiator and tiled flooring. Modern fitted kitchen featuring wall and base units with Oak worksurfaces over, Belfast sink, Range cooker with two electric ovens and grill, 5-ring gas hob and Rangemaster extractor hood above, built-in washing machine, dishwasher and fridge/freezer.

Living Room

15' 6" x 12' 8" (4.73m x 3.85m)

Doors to the garden, LPG inset burner, radiator and fitted carpets.



**Bedroom 1**

15' 6" x 12' 7" (4.73m x 3.83m)

Window to the rear , radiator and fitted carpet.

En-suite

Quadrant shower enclosure with thermostatic shower, WC, wash basin, extractor fan, towel radiator, partly tiled walls and flooring.

Bedroom 2

10' 10" x 6' 5" (3.29m x 1.96m)

Window to the front, radiator and fitted carpet.

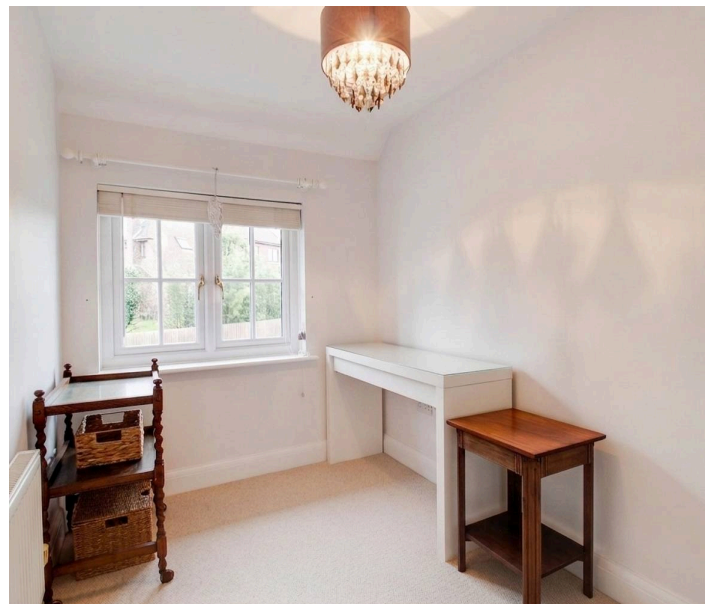
Bedroom 3

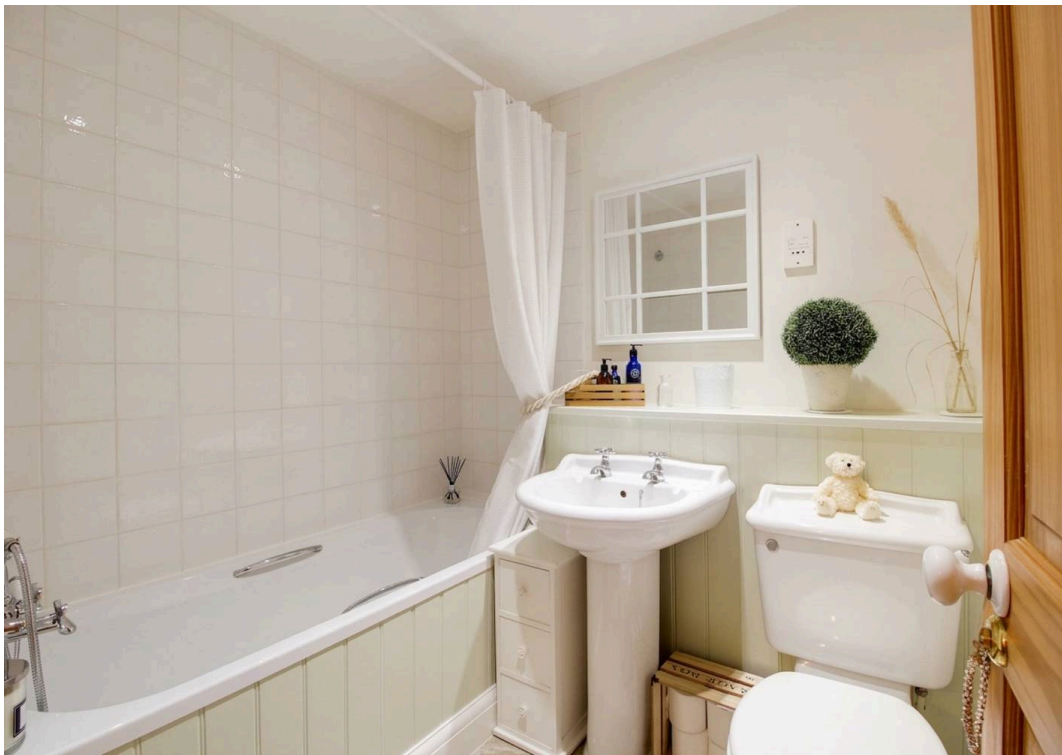
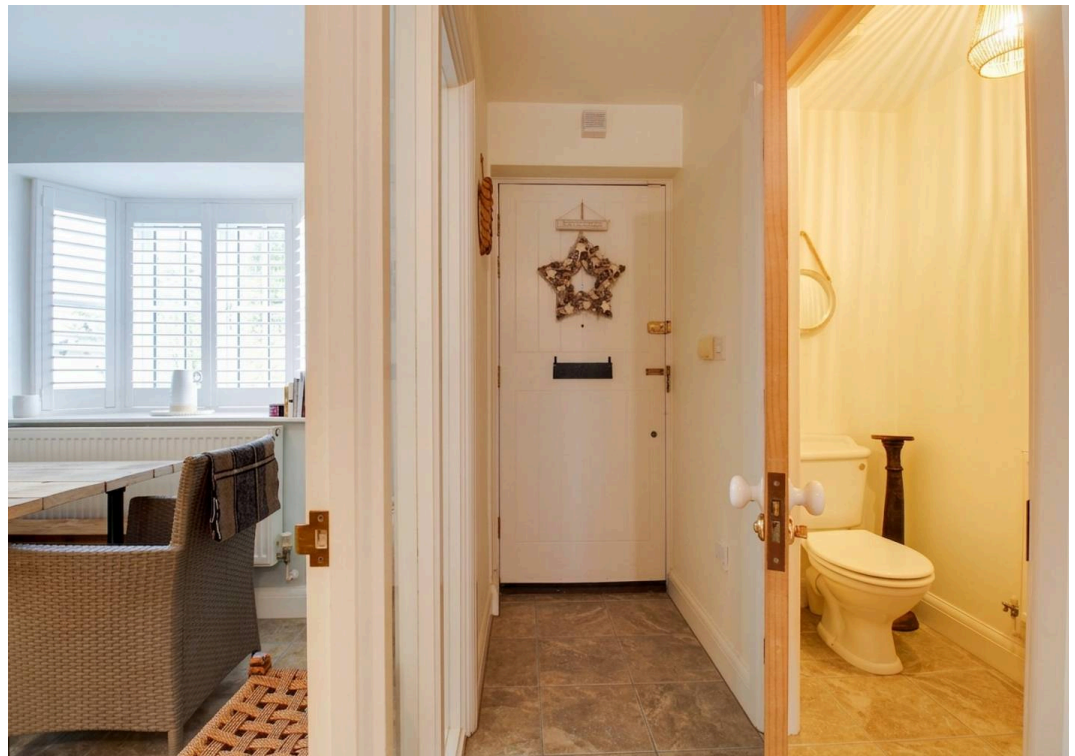
10' 10" x 9' 0" (3.29m x 2.74m)

Window to the front, built-*' cupboard, radiator and fitted carpet.

Bathroom

Comprising a bath with mixer taps and shower attachment, WC, wash basin, extractor fan, shaver socket, radiator, partly tiled walls and tiled flooring.



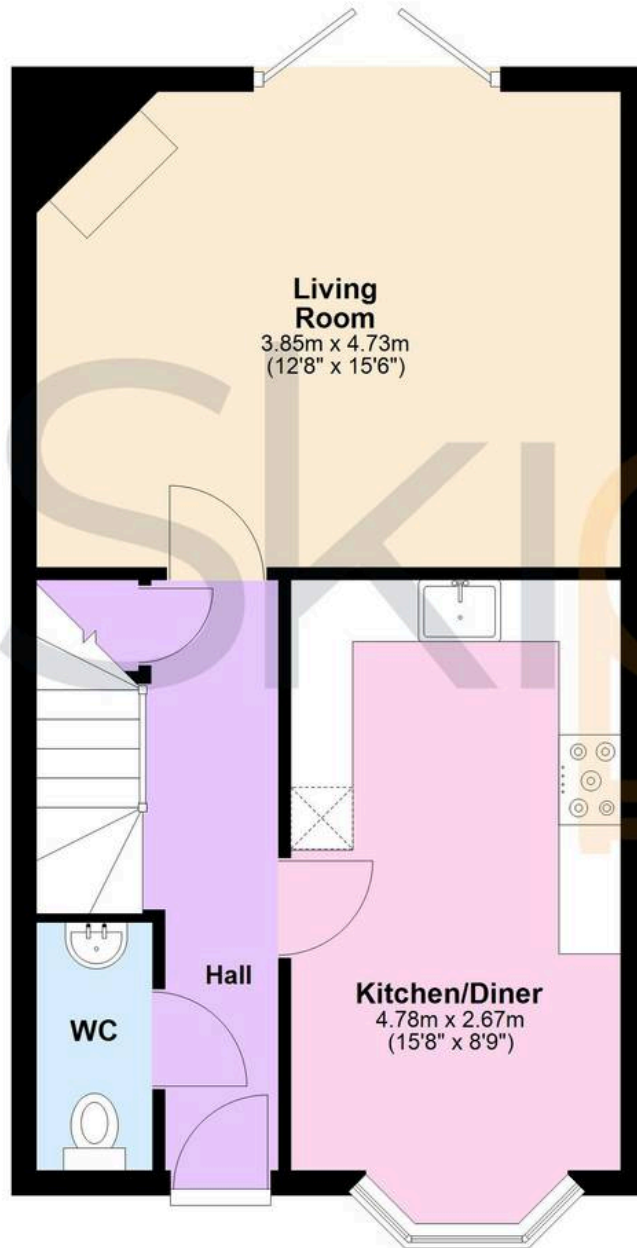






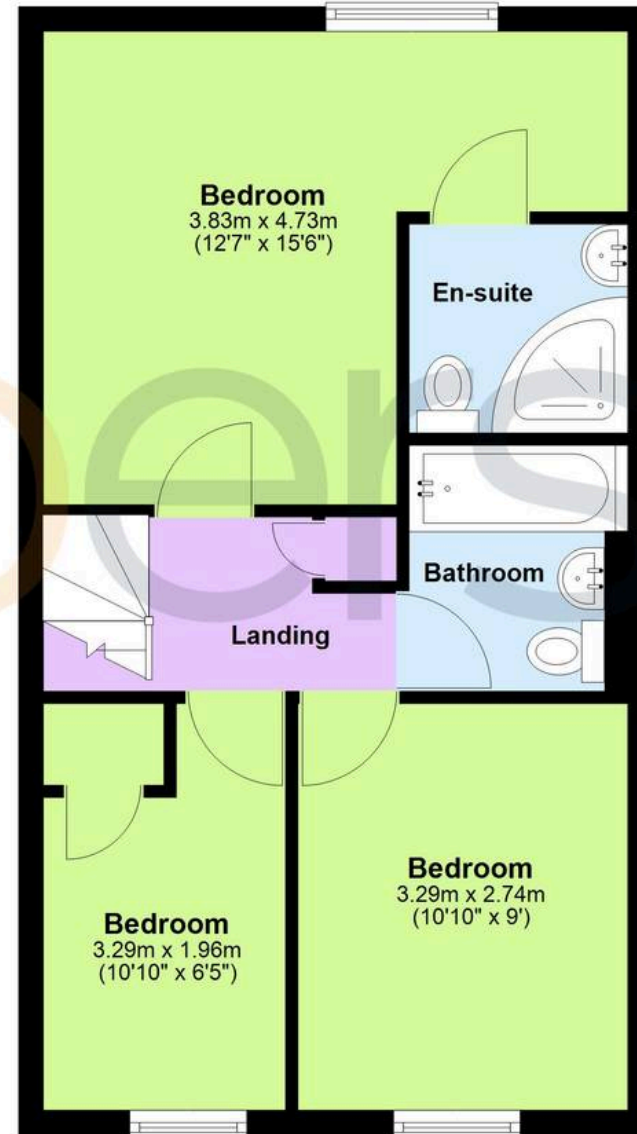
Ground Floor

Approx. 41.5 sq. metres (446.4 sq. feet)



First Floor

Approx. 41.5 sq. metres (447.0 sq. feet)



Total area: approx. 83.0 sq. metres (893.4 sq. feet)



Skippers Estate Agents – Ashford

5 Kings Parade High Street, Ashford – TN24 8TA

01233 632383

ashford@skippers-ea.co.uk

skippers-ea.co.uk

Skippers

