



7 Glebe Way, Kennington

Guide Price **£350,000**

Skippers

7 Glebe Way

Kennington, Ashford

Well presented 3 bed semi in Kennington. Modern kitchen, spacious lounge, south-facing garden, off-road parking for 2 cars. Close to schools, transport. No onward chain. Ideal for families.
Council Tax band: C

Tenure: Freehold

- NO ONWARD CHAIN
- Well Presented Semi-Detached Family Home
- 3 Bedrooms
- Modern Kitchen/Diner
- Lounge with outlook over rear garden
- Driveway Parking for 2 Vehicles
- Popular Kennington Location within Walking Distance to Schools and Public Transport Links to Ashford Town & Train Station
- Modern Family Bathroom
- Southerly Facing Rear Garden with Timber Storage Shed



Hallway

Stairs leading to first floor, understairs recess area for storage and cupboard, doors leading through to kitchen/diner and lounge.

Kitchen/Dining Room

10' 11" x 8' 9" (3.33m x 2.67m)

Good range of modern cupboards and drawers beneath work surfaces with additional wall mounted units, window outlook to front and door to side, one and half bowl stainless steel sink with mixer tap and drainer, down lighters, gas hob with splashback and extractor fan over, low level oven, integrated washing machine and dishwasher, partially tiled walls.

Lounge

18' 10" x 10' 11" (5.74m x 3.33m)

Sliding patio doors leading to rear.

Landing

With doors leading to bedrooms and family bathroom and airing cupboard.

Bedroom

11' 5" x 10' 11" (3.48m x 3.33m)

Double aspect with window to side and rear and built in storage cupboard.

Bedroom

10' 11" x 8' 9" (3.33m x 2.67m)

Double aspect with window to front and side and built in storage cupboard.

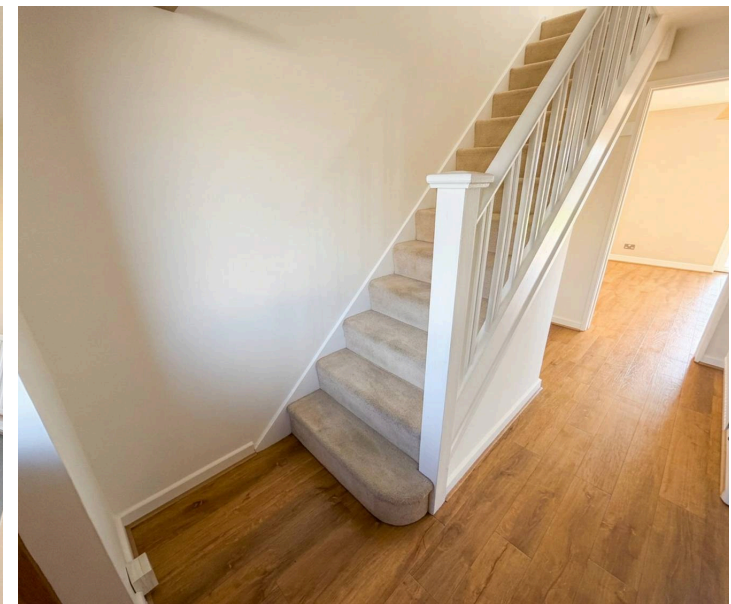
Bedroom

8' 6" x 7' 7" (2.59m x 2.31m)

Window outlook to rear.

Family Bathroom

White suite comprising low level wc, pedestal wash hand basin with mixer tap, panelled bath with mixer tap and shower attachment, heated towel radiator, obscured window to front, partially tiled walls.





Hallway

Stairs leading to first floor, understairs recess area for storage and cupboard, doors leading through to kitchen/diner and lounge.

Kitchen/Dining Room

10' 11" x 8' 9" (3.33m x 2.67m)

Good range of modern cupboards and drawers beneath work surfaces with additional wall mounted units, window outlook to front and door to side, one and half bowl stainless steel sink with mixer tap and drainer, down lighters, gas hob with splashback and extractor fan over, low level oven, integrated washing machine and dishwasher, partially tiled walls.

Lounge

18' 10" x 10' 11" (5.74m x 3.33m)

Sliding patio doors leading to rear.

Landing

With doors leading to bedrooms and family bathroom and airing cupboard.

Bedroom

11' 5" x 10' 11" (3.48m x 3.33m)

Double aspect with window to side and rear and built in storage cupboard.

Bedroom

10' 11" x 8' 9" (3.33m x 2.67m)

Double aspect with window to front and side and built in storage cupboard.

Bedroom

8' 6" x 7' 7" (2.59m x 2.31m)

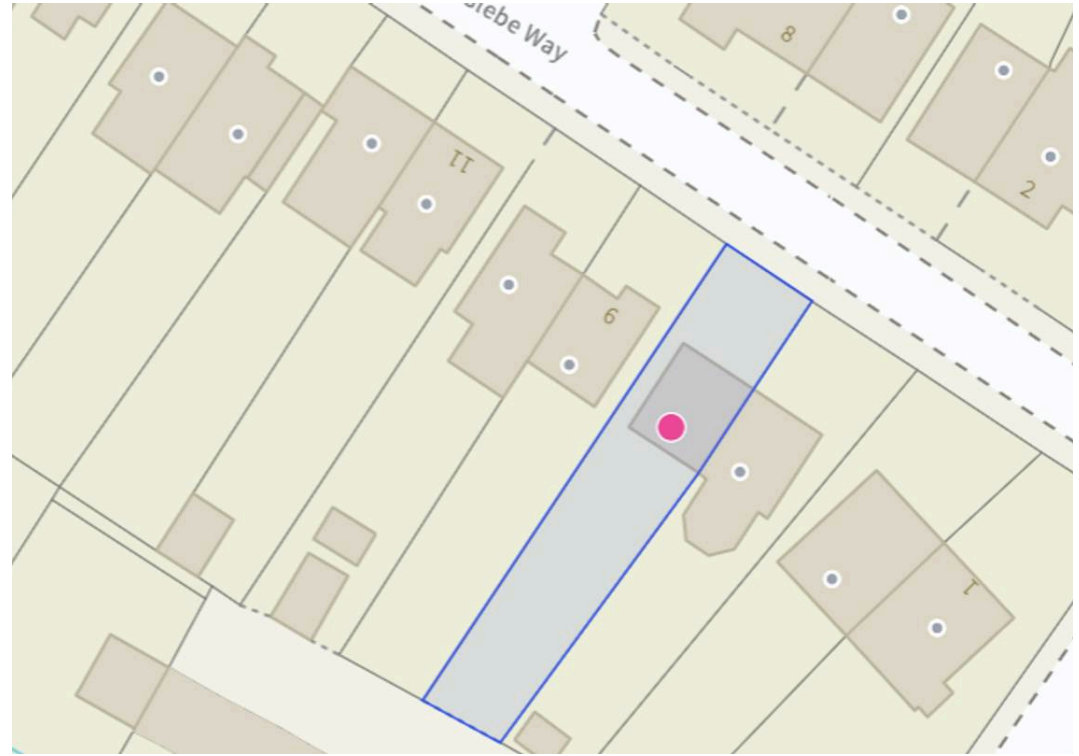
Window outlook to rear.

Family Bathroom

White suite comprising low level wc, pedestal wash hand basin with mixer tap, panelled bath with mixer tap and shower attachment, heated towel radiator, obscured window to front, partially tiled walls.

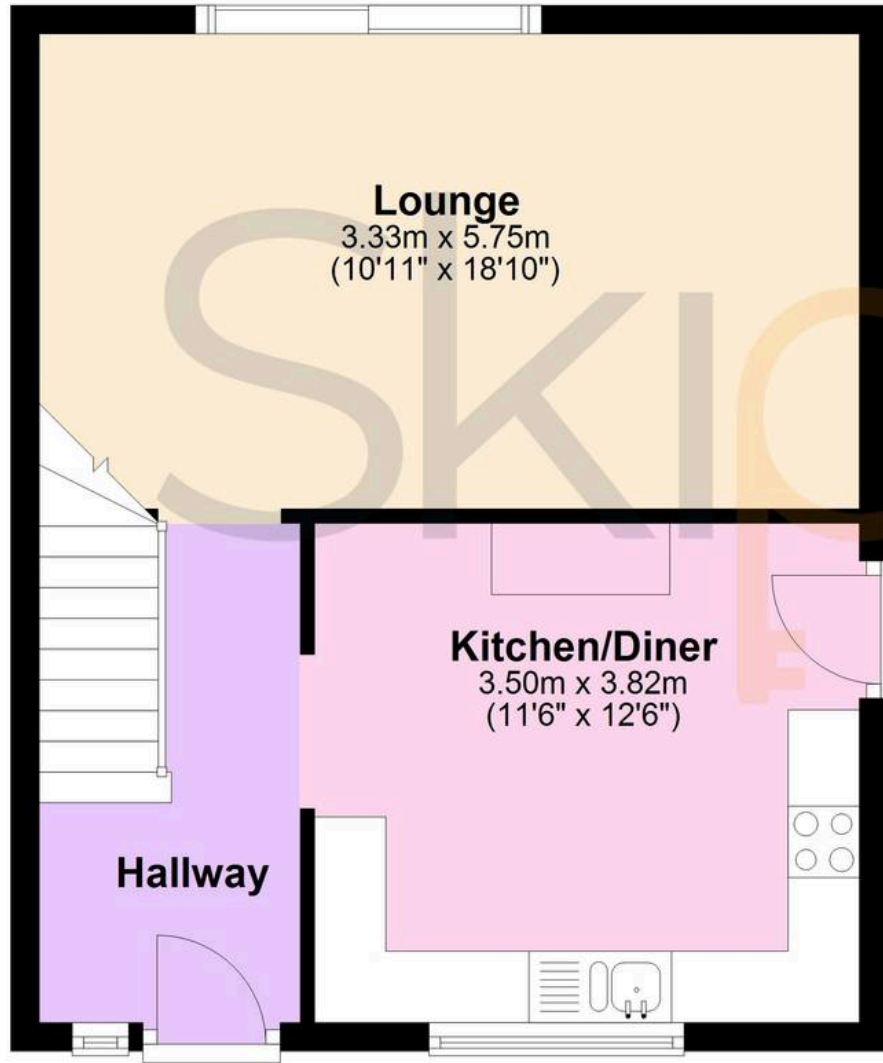






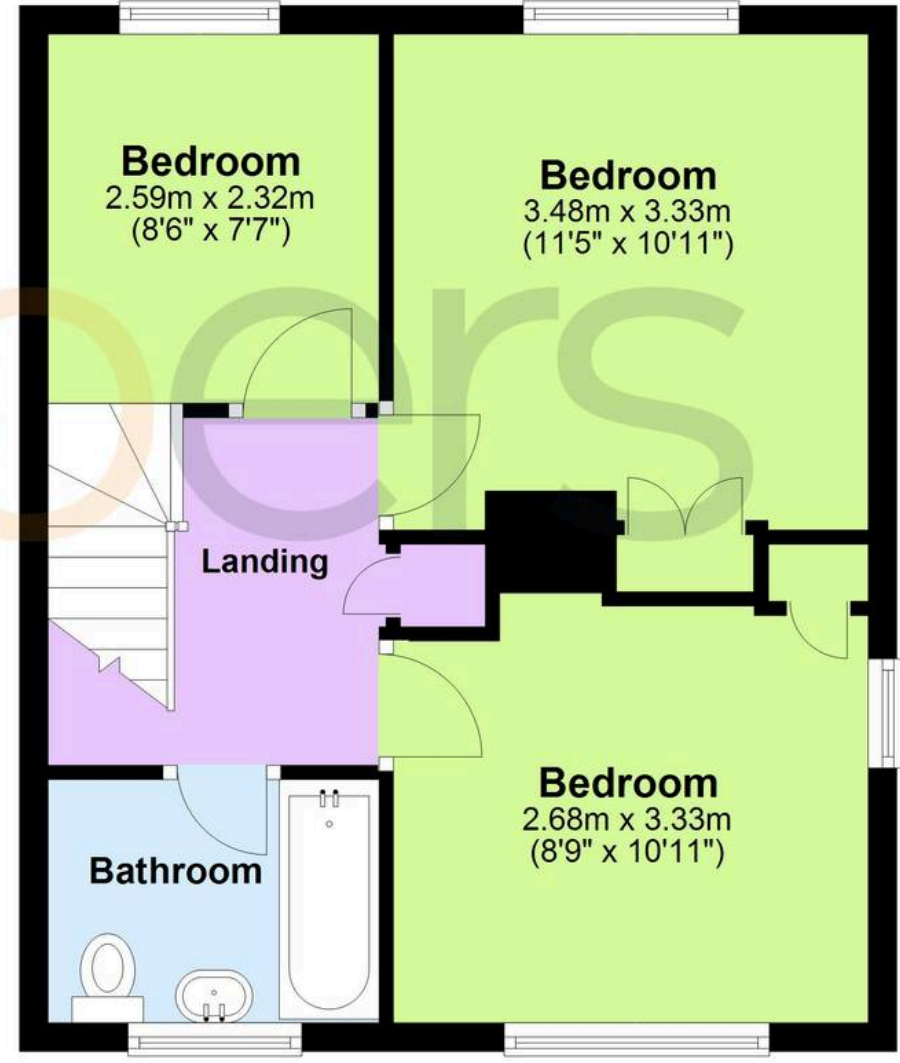
Ground Floor

Approx. 39.8 sq. metres (428.9 sq. feet)



First Floor

Approx. 39.8 sq. metres (428.9 sq. feet)



Total area: approx. 79.7 sq. metres (857.8 sq. feet)



Skippers Estate Agents – Ashford

5 Kings Parade High Street, Ashford – TN24 8TA

01233 632383

ashford@skippers-ea.co.uk

skippers-ea.co.uk

Skippers

