



23 Darnley Close, Folkestone

Offers in Region of £275,000

Skippers

23 Darnley Close

Folkestone

Chain-free three bed end terrace in popular area. Spacious living, kitchen/diner, private garden, garage, and parking. Ideal for families or professionals. Needs updating. EPC C. Great potential. O.I.R.O £275,000

- Offers in the Region of £275,000
- End Terraced Property
- Three Bedrooms
- Chain Free Sale
- Garage on-bloc
- Two Leveled Garden With Rear Access
- Popular Location
- EPC Rating "C"





This three bedroom end of terrace house presents an excellent opportunity for buyers seeking a property to modernise and make their own. Offered chain free and situated in a popular residential location, the home provides a practical layout ideal for families or professionals. The ground floor features a spacious living area and a kitchen/diner, offering a flexible space for both relaxing and entertaining. Upstairs, there are three well-proportioned bedrooms, providing ample accommodation for a growing family or those needing a home office. The property holds an EPC rating of "C" and, with some updating, offers great potential to enhance its value and comfort. This end terraced property is well positioned for access to local amenities, schools, and transport links, making it a convenient choice for commuters and families alike.

The outside space is both functional and private, with a small patio area directly accessible from the kitchen/diner. This patio, complete with a side gate for rear access, is ideal for outdoor dining or relaxing. A few steps lead up to the second level garden, mainly laid to lawn, providing a safe and enclosed area for children to play or for keen gardeners to personalise. The property also benefits from a single garage located on-bloc opposite the house (the third garage in from the left as you face forward), with a manual garage door and a dedicated parking space directly in front. The area operates with parking permit controls, ensuring space for residents and their guests. This combination of private garden, secure parking, and garage storage adds to the overall appeal, making this property a practical choice for buyers looking for a home with potential in a sought-after area.

- Offers in the Region of £275,000
- End Terraced Property
- Three Bedrooms
- Chain Free Sale
- Garage on-bloc
- Two Levelled Garden With Rear Access
- Popular Location
- EPC Rating "C"

Entrance Porch

5' 10" x 4' 0" (1.78m x 1.23m)

UPVC frosted glazed front door. Large storage cupboard housing fuse board and gas meter. Laminate wood flooring and internal wooden Door To :-

Lounge/Dining

16' 11" x 15' 11" (5.16m x 4.86m)

Large UPVC double glazed window to the front of the property. Laminate wood flooring, stairs to first floor landing. Feature brick fireplace, Coving and Cupboard housing warm air heating system. Door To :-

Kitchen/Breakfast

15' 11" x 11' 5" (4.86m x 3.47m)

UPVC double glazed patio doors out to the garden. UPVC double glazed window. Matching wall and base units, stainless steel sink, Space for washing machine and a low level fridge. Fan oven, electric hob and extractor fan. Warm air heating vent. Boiler for hot water system. Space for a freestanding fridge freezer.

U Shape Landing

9' 7" x 6' 6" (2.93m x 1.97m)

Vinyl flooring, loft hatch and large storage/airing cupboard. Doors To :-

Bedroom

13' 11" x 9' 2" (4.23m x 2.79m)

UPVC double glazed window to the front of the property. Carpeted floor coverings. Large built in wardrobe and warm air heating vent.

Bedroom

11' 5" x 8' 8" (3.49m x 2.64m)

UPVC double glazed window to the rear overlooking the garden. Carpeted floor coverings, built in wardrobe and warm air heating vent.

Bedroom

10' 0" x 6' 5" (3.06m x 1.95m)

UPVC double glazed window to the front and carpeted floor coverings.

Bathroom

REAR GARDEN

Small patio area as you exit out from kitchen/diner. Patio area with side gate for rear access. Few steps leading up to area laid to lawn.

GARAGE

Single Garage

Single garage with manual garage door on bloc opposite the house (third in from the left) as you look forward facing and one parking space in front of the garage.

PERMIT

1 Parking Space

Parking permit controlled area.

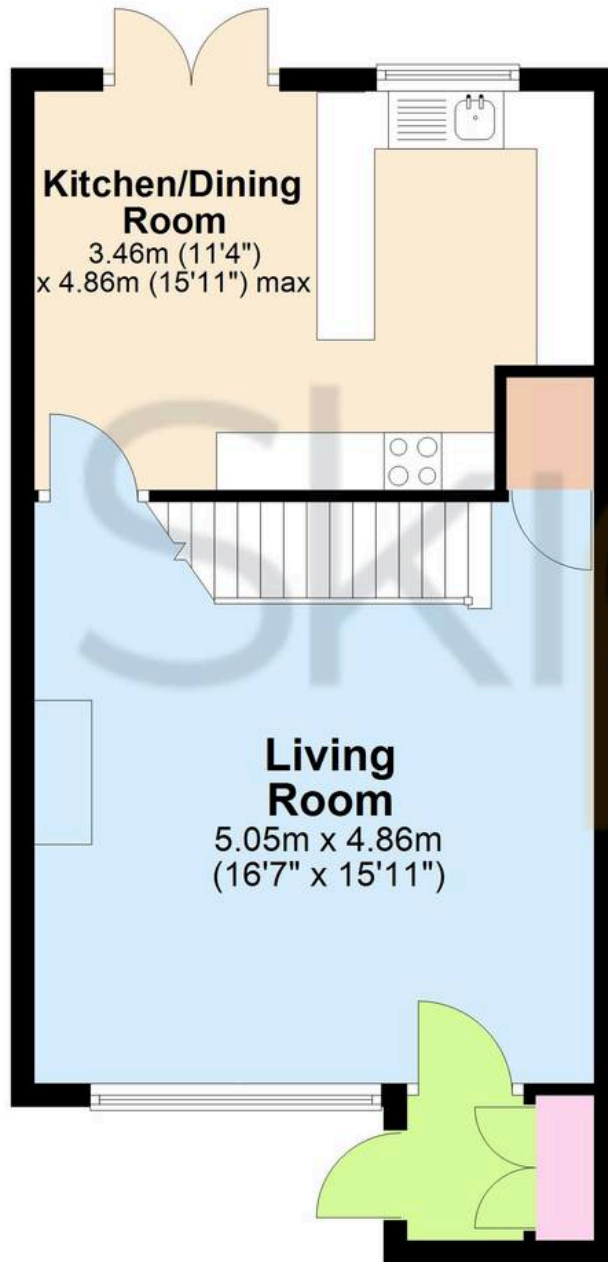






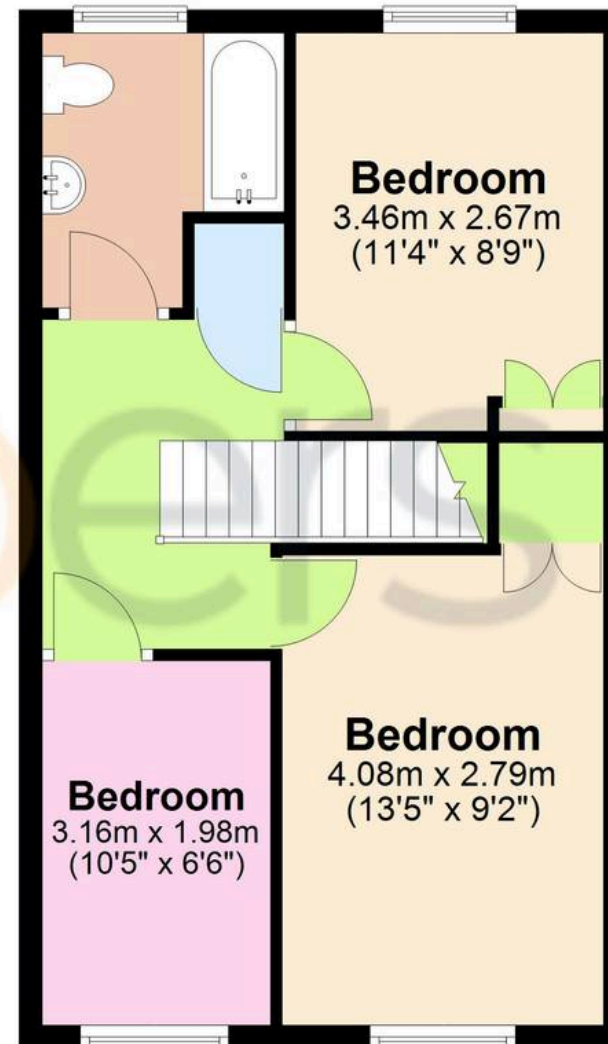
Ground Floor

Approx. 44.1 sq. metres (474.2 sq. feet)



First Floor

Approx. 41.9 sq. metres (451.4 sq. feet)



Total area: approx. 86.0 sq. metres (925.6 sq. feet)



Skippers Estate Agents Cheriton/Folkestone

30 High Street, Cheriton - CT19 4ET

01303 279955

cheriton@skippers-ea.co.uk

skippers-ea.co.uk

Skippers