



40 Shirkoak Park, Woodchurch

In Excess of **£140,000**

Skippers

40 Shirkoak Park

Woodchurch, Ashford

Spacious two-bedroom park home in sought-after Woodchurch, featuring a large kitchen diner, private garden and patio, driveway parking, and easy access to local amenities and scenic walks.

Council Tax band: A

Tenure: Leasehold

- Driveway parking
- Private garden
- Two double bedrooms
- Pet friendly
- Over 50's only
- Mains Gas



Living Room

21' 3" x 10' 10" (6.47m x 3.31m)

Carpeted room with double doors to the garden, side windows, and doors to the hallway and kitchen/diner.

Kitchen/Dining area

16' 2" x 8' 2" (4.94m x 2.49m)

Fitted kitchen comprising matching wall and base units with worksurfaces over, inset sink/drain, built-in appliances including a gas oven, 4-ring gas hob, extractor hood and dishwasher. Plumbing and space for washing machine and fridge/freezer. Dining area with window to the side and radiator. Entrance door to the side, window to the rear and door leading into the lounge.

Hallway

Carpeted with doors leading to lounge, bathroom and two bedrooms and large storage cupboard.

Bathroom

6' 9" x 6' 4" (2.05m x 1.94m)

Carpeted floor with panelled bath, mixer taps and over head shower attachment. Low-level WC and a wash basin.

Bedroom 1

14' 0" x 9' 4" (4.27m x 2.84m)

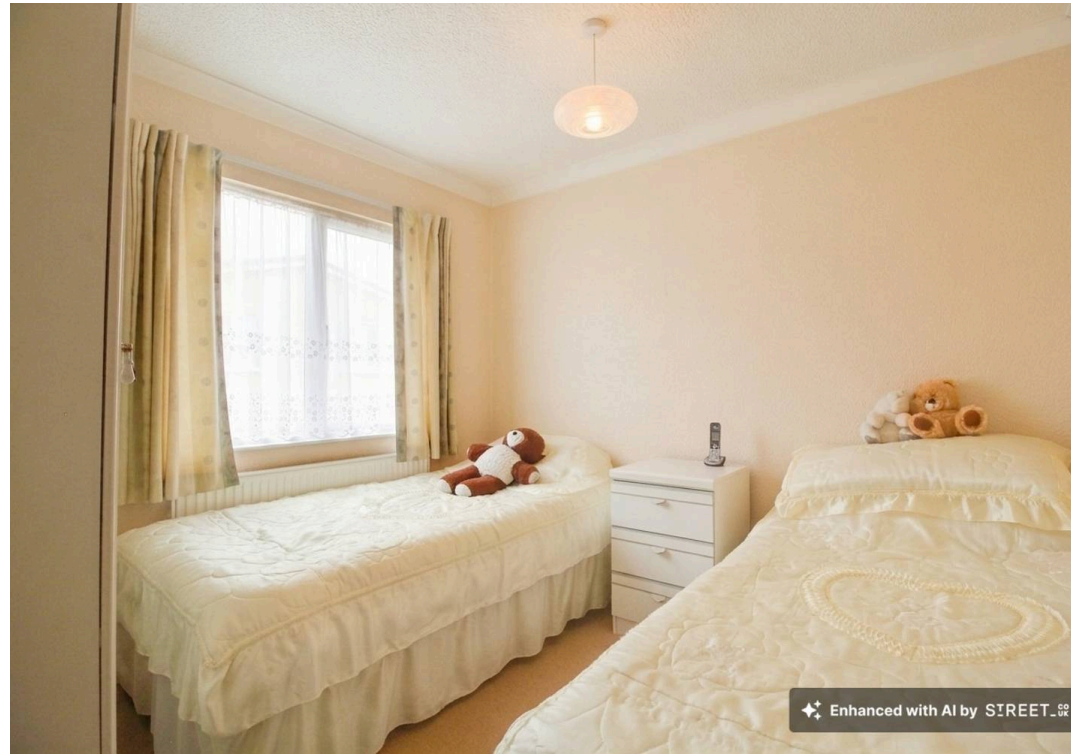
Window to the side and front, built-in wardrobes, radiator and carpeted floor.

Bedroom 2

9' 5" x 9' 0" (2.86m x 2.75m)

Window to the front, radiator and carpeted floor.

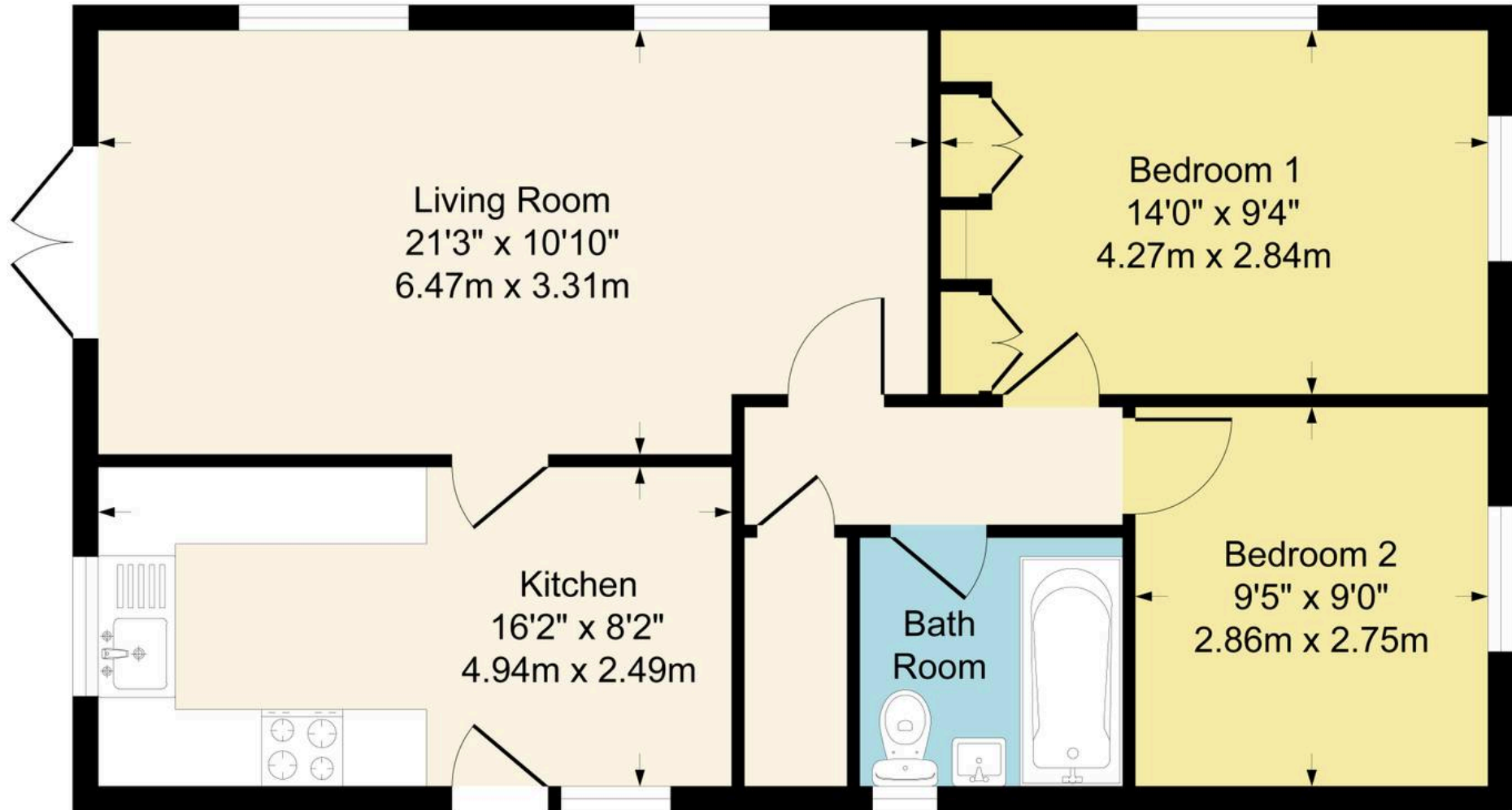






15 40

Approximate Gross Internal Area 677 sq ft - 63 sq m



Although every attempt has been made to ensure accuracy, all measurements are approximate.
This floorplan is for illustrative purposes only and not to scale.
Measured in accordance with RICS Standards.



Skippers Estate Agents – Ashford

5 Kings Parade High Street, Ashford – TN24 8TA

01233 632383

ashford@skippers-ea.co.uk

skippers-ea.co.uk



