



33 Romney Road, Willesborough

Guide Price £350,000

Skippers

33 Romney Road

Willesborough, Ashford

Guide Price £350,000 - £375,000 Spacious 4-bed home with lounge/diner, fitted kitchen, garden, driveway, and great transport links. Close to shops, schools, and Ashford International. Ideal for families or commuters.

Council Tax band: C

Tenure: Freehold

- Guide Price £350,000 - £375,000
- Four bedroom semi detached home
- Ground-floor family bathroom
- Large private rear garden
- Within walking distance of Willesborough Infant & Junior Schools, The Norton Knatchbull School, and The North School
- Loft conversion with en-suite W/C
- Block paved driveway to the front
- Victorian bay fronted
- Close to Willesborough Recreation Ground, local shops, amenities, and Ashford town centre with high-speed rail links to London



Entrance hallway

Stairs to the first-floor, entrance to open plan lounge diner and radiator.

Lounge

Bay window to the front, open fire and radiator.

Dining room

Window to rear, understairs cupboard and radiator.

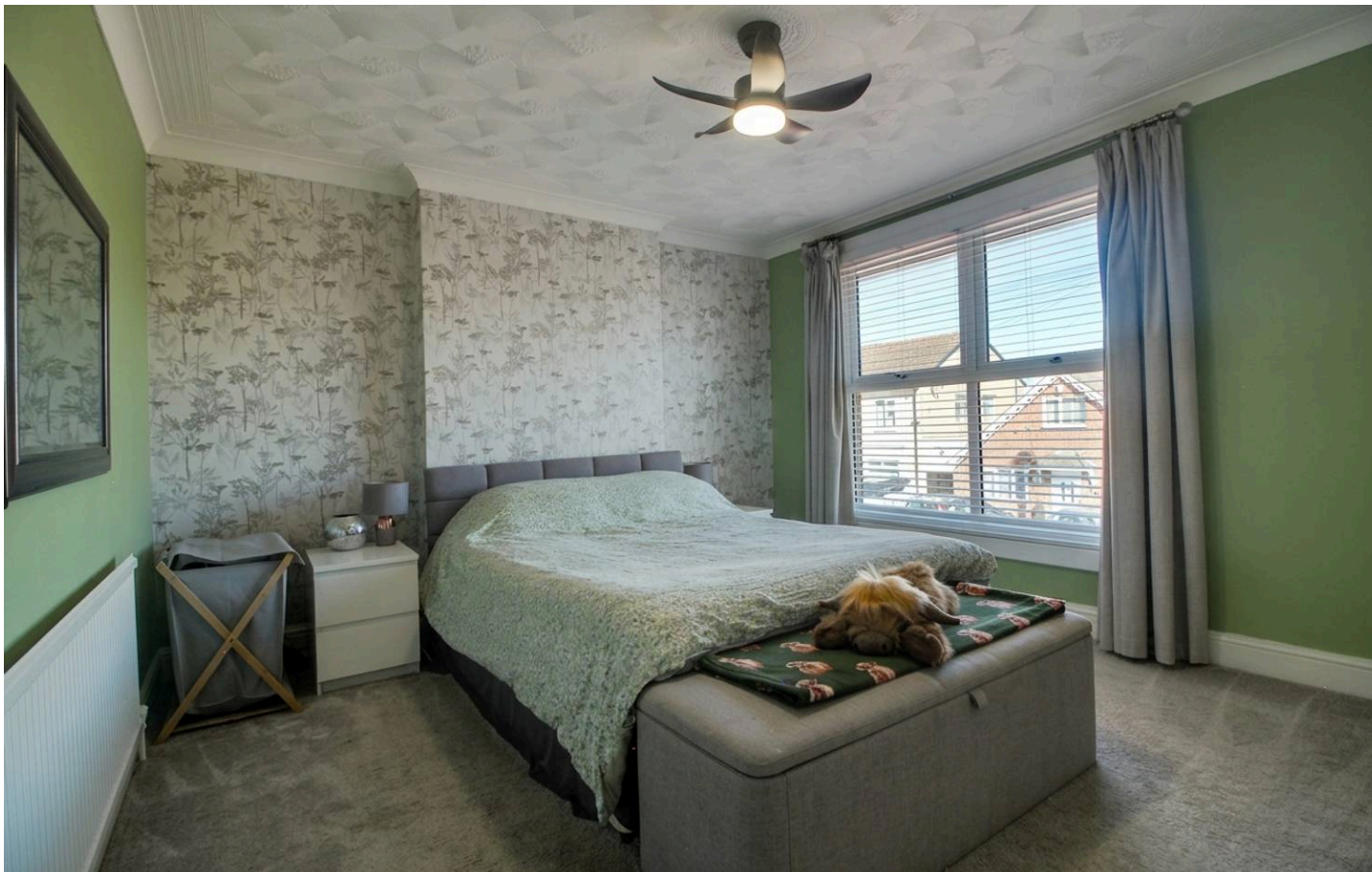
Kitchen

Fitted kitchen comprising matching wall and base units with work surfaces over, inset stainless steel 1.5 bowl sink/drain, built-in electric oven/grill, 4-zone hob and extractor over, space and plumbing for washing machine, space for free-standing fridge/freezer, window to the side and door to garden.

Bathroom

Modern bathroom comprising bath with mixer taps and shower over with glass shower screen, WC, wash basin and tiled walls. Window's to the rear.





Landing

Doors to three bedrooms, fitted carpet to the stairs and landing. Stairs leading to top floor.

Bedroom 1

Window to the front, fitted wardrobe, built-in cupboard, radiator and fitted carpet.

Bedroom 3

Window to the rear, radiator and fitted carpet.

Bedroom 4

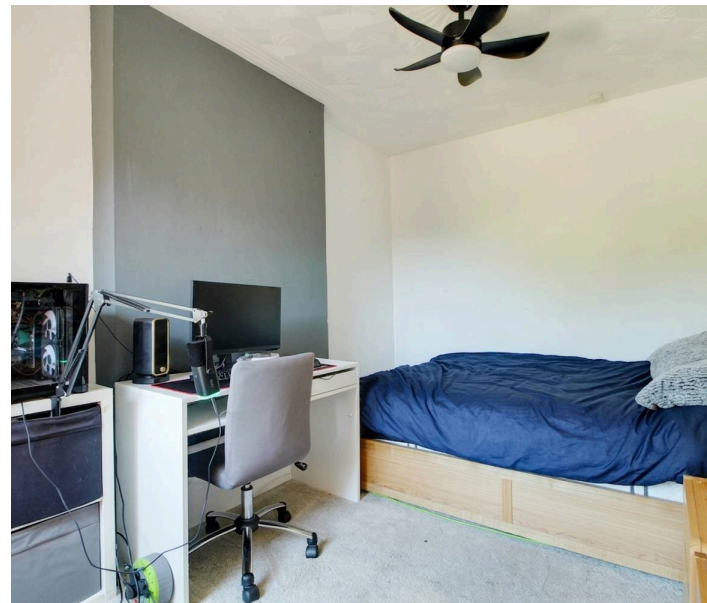
Window to the rear, radiator and fitted carpet.

Landing

Door to bedroom 2, fitted carpet to the stairs and landing.

Bedroom 2

Window to the rear, Velux windows to front, radiator and carpeted floor. Ensuite with w/c and sink basin.







Approximate Gross Internal Area
1168 sq ft - 109 sq m



Ground Floor

First Floor

Second Floor

Although every attempt has been made to ensure accuracy, all measurements are approximate.
This floorplan is for illustrative purposes only and not to scale.
Measured in accordance with RICS Standards.



Skippers Estate Agents – Ashford

5 Kings Parade High Street, Ashford – TN24 8TA

01233 632383

ashford@skippers-ea.co.uk

skippers-ea.co.uk

Skippers

