



1 Woodside, Ashford

Guide Price £330,000

Skippers

1 Woodside

Ashford, Ashford

Backing onto woodland, this three-bedroom semi-detached home offers private outdoor space, a sunny secluded garden, and generous parking. Featuring a downstairs cloakroom and spacious kitchen/diner, it's an ideal family home in a peaceful Woodside location.

Council Tax band: C

Tenure: Freehold

- Three-bedroom semi-detached home
- Backs directly onto woodland
- Secluded and private rear garden
- Garden enjoying sun throughout the day
- Spacious kitchen/diner
- Comfortable family lounge
- Downstairs cloakroom
- Principal bedroom with fitted wardrobes
- Driveway parking for numerous vehicles
- Popular location close to amenities and transport links



Hallway

Part glazed composite door to the side, stairs leading to the first floor with under-stairs storage cupboard, radiator and laminate wood flooring.

Cloakroom

Window to the front, WC, wash basin, radiator and laminate wood flooring.

Lounge

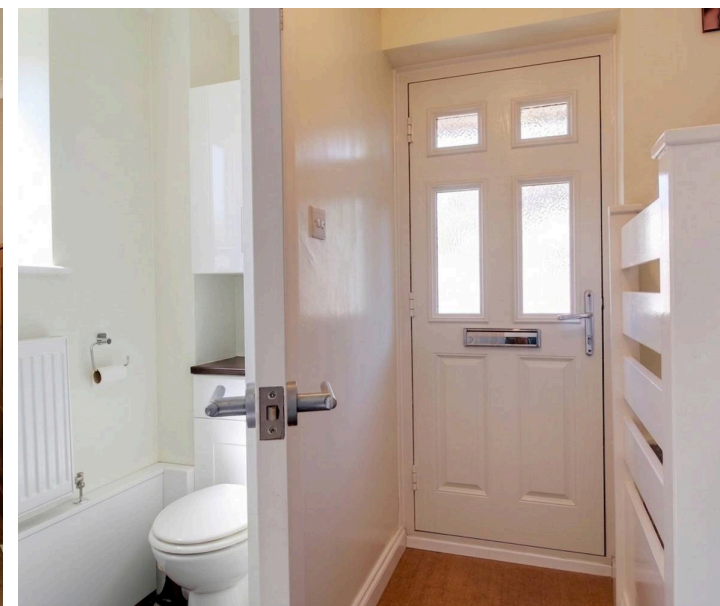
14' 1" x 11' 1" (4.30m x 3.37m)

Window to the front, radiator and fitted carpet.

Kitchen / Diner

17' 6" x 8' 8" (5.34m x 2.63m)

Windows to the rear overlooking the garden and door leading to the outside, radiator and laminate wood flooring. Kitchen comprises matching wall and base units with work surfaces over, inset stainless steel sink/drain, built-in electric oven, 4-rings hob, plumbing with space for washing machine, space for fridge/freezer. Wall mounted central heating boiler.





Landing

Window to the side, doors to each room, storage cupboard, loft access and fitted carpet to the stairs and landing.

Bedroom 1

11' 9" x 9' 7" (3.59m x 2.93m)

Window to the rear, built-in wardrobes, radiator and fitted carpet.

Bedroom 2

9' 7" x 8' 11" (2.93m x 2.72m)

Window to the front, radiator and fitted carpet.

Bedroom 3

8' 8" x 7' 7" (2.65m x 2.30m)

Window to the rear, radiator and fitted carpet.

Bathroom

Window to the front, bath with mixer taps, shower above and glass shower screen, WC, wash basin with storage beneath, extractor fan, towel radiator, shaver socket, half height wall tiling (fully tiled around the bath) and laminate wood flooring.

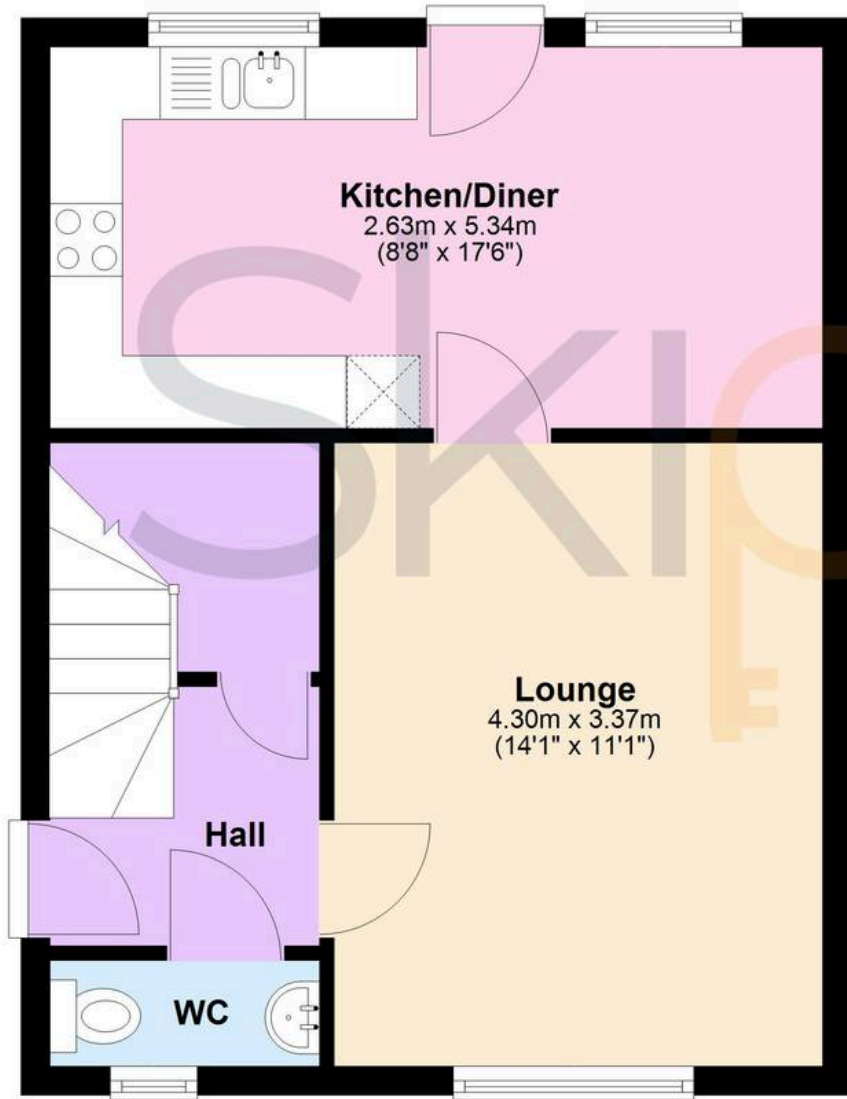






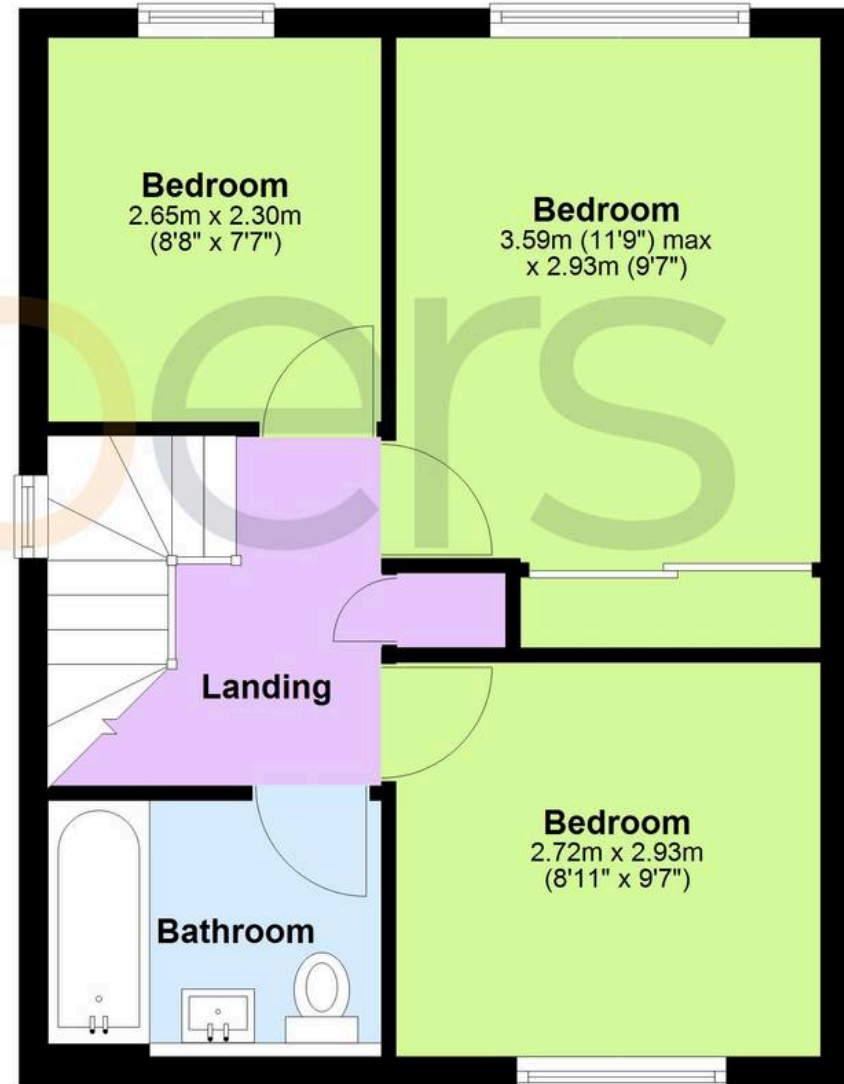
Ground Floor

Approx. 37.5 sq. metres (403.6 sq. feet)



First Floor

Approx. 37.5 sq. metres (403.3 sq. feet)



Total area: approx. 75.0 sq. metres (806.9 sq. feet)



Skippers Estate Agents – Ashford

5 Kings Parade High Street, Ashford – TN24 8TA

01233 632383

ashford@skippers-ea.co.uk

skippers-ea.co.uk



