



11 High Ridge, Ashford  
£350,000

# 11 High Ridge

Ashford, Ashford

Well-presented three-bed semi in Singleton with driveway, garage, conservatory, en-suite to main bedroom, spacious lounge, low-maintenance garden.

Council Tax band: D

Tenure: Freehold

- Three-bedroom semi-detached family home
- Sought-after location in Singleton within walking distance of Great Chart Primary School
- Bright and spacious living room
- Conservatory
- Main bedroom with built-in wardrobes & en-suite
- Additional convenience of a garage for storage or workspace
- Driveway parking



**Hallway**

Stairs to the first floor, radiator

**Cloakroom**

Window to the side, WC, wash basin and radiator

**Living Room**

Window to rear and French doors to the conservatory, understairs storage cupboard, radiators and carpeted flooring.

**Kitchen**

Windows to the front. Wooden fitted kitchen with matching wall and base units, built-in oven, 4-ring gas hob and extractor hood, space and plumbing for washing machine, dishwasher and fridge/freezer.

**Conservatory**

Radiator.





### **Landing**

Carpeted with doors leading to all rooms and airing cupboard. Access to loft space - partly boarded with loft ladder.

### **Bedroom 1**

Windows to the front, built-in wardrobe, large storage cupboard, radiator and fitted carpet.

### **En-suite**

Square shower enclosure, WC, wash basin, extractor fan and radiator.

### **Bedroom 2**

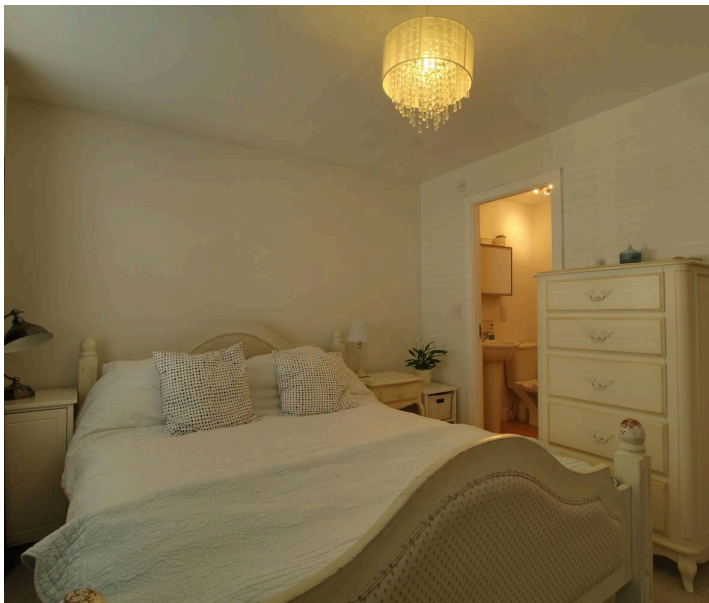
Window to front and rear, two radiators and fitted carpet.

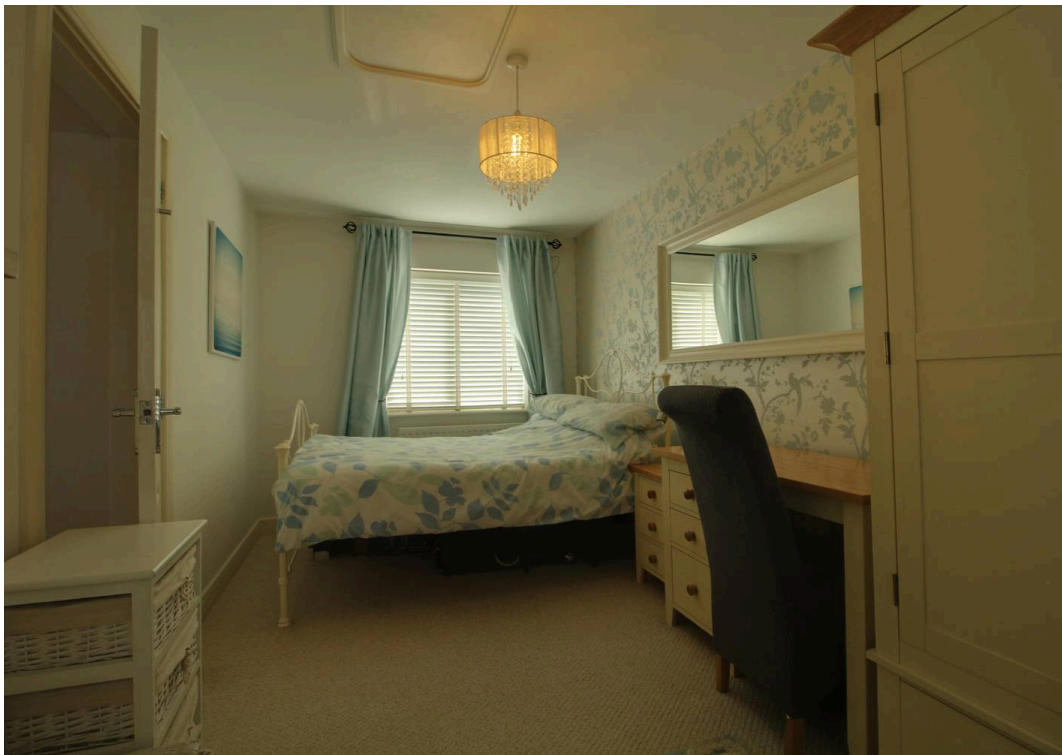
### **Bedroom 3**

Window to the rear, radiator and fitted carpet.

### **Bathroom**

Comprising a bath with mixer taps, hand held shower head, WC, wash basin, extractor fan, radiator, partly tiled walls. Window to the rear.

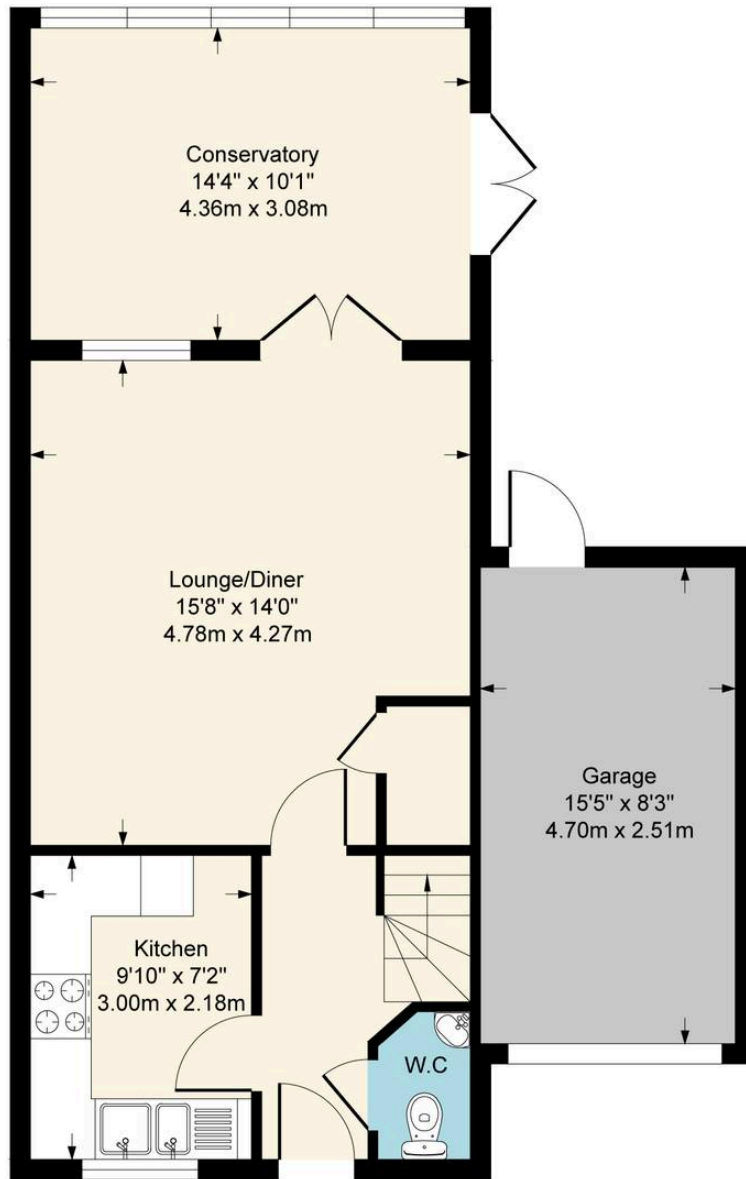




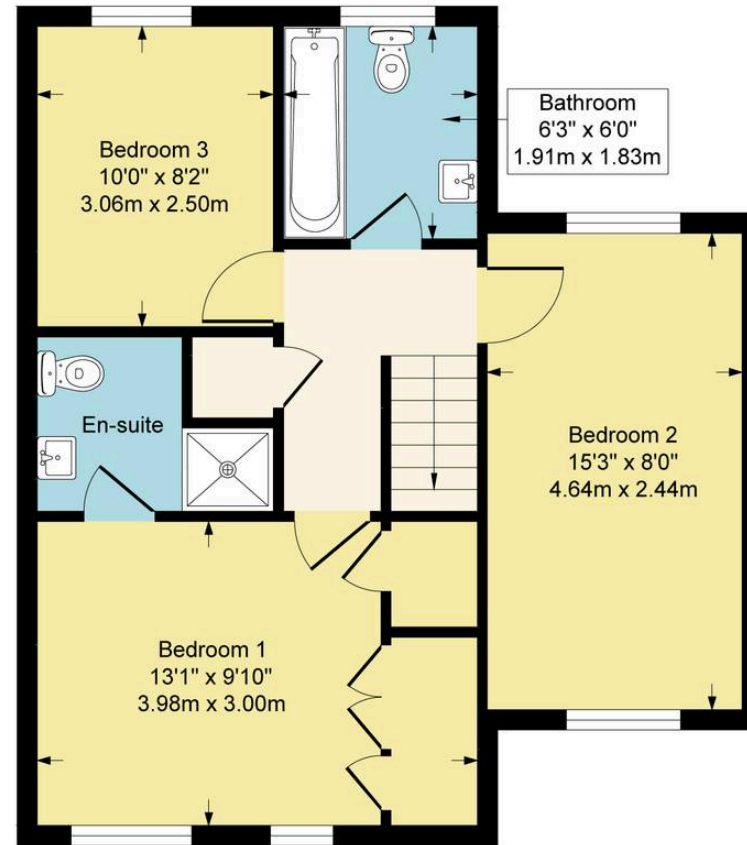




**Approximate Gross Internal Area  
1153 sq ft - 107 sq m**



**Ground Floor**



**First Floor**

Although every attempt has been made to ensure accuracy, all measurements are approximate.  
This floorplan is for illustrative purposes only and not to scale.  
Measured in accordance with RICS Standards.



## Skippers Estate Agents – Ashford

5 Kings Parade High Street, Ashford – TN24 8TA

01233 632383

[ashford@skippers-ea.co.uk](mailto:ashford@skippers-ea.co.uk)

[skippers-ea.co.uk](http://skippers-ea.co.uk)

The logo for Skippers Estate Agents, featuring the word "Skippers" in a white, sans-serif font. The letter "i" is replaced by a stylized orange key icon. The logo is set against a dark blue background.

Skippers

