



3 Nine Acres, Kennington

Offers in Region of £275,000

Skippers

3 Nine Acres

Kennington, Ashford

Well-presented 3-bed mid-terrace in Kennington. Modern kitchen, spacious lounge/diner, stylish bathroom, private low-maintenance gardens, built-in storage. Near schools, amenities, and transport links.

Council Tax band: B

Tenure: Freehold

- Private Garden laid with Artificial Lawn for ease of Maintenance
- Modern Kitchen and Family Bathroom
- Ample built-in storage
- Well-Presented Mid-Terraced Family Home
- 3 Bedrooms
- Lounge/Diner
- Convenient Kennington Location with good public transport links to Town & Train Station
- Short walking distance to Primary Schooling and Hayesbank Doctors Surgery
- Ideal First Time Buy or But to Let Investment purchase
- Gas Fired Central Heating



Hallway

With Stairs leading to first floor, doors through to Kitchen and Lounge Diner, 2 good sized storage cupboards.

Lounge/Diner

19' 6" x 11' 11" (5.94m x 3.63m)

Double aspect with window to front and double doors leading to rear Garden.

Kitchen

Good range of cupboards and drawers beneath work surfaces, additional wall mounted units. Window to rear, space and plumbing for washing machine, gas hob with extractor over and double low level oven, inset spotlights, sink with mixer tap with understairs storage cupboard.

Landing

Doors leading to bedrooms and family bathroom, airing cupboard.

Bedroom

11' 11" x 10' 6" (3.63m x 3.20m)

Window outlook to front built in mirror fronted wardrobes.

Bedroom

13' 6" x 9' 1" (4.12m x 2.77m)

Window outlook to rear.

Bedroom

10' 9" x 9' 5" (3.28m x 2.87m)

Window outlook to front.

Family Bathroom

White suite comprising low level wc, wash hand basin with mixer tap and vanity storage under, p-shaped bath with mixer tap and shower over rainforest shower head with shower screen, obscured window to rear, fully tiled walls.





Enhanced with AI by STREET_50

Hallway

With Stairs leading to first floor, doors through to Kitchen and Lounge Diner, 2 good sized storage cupboards.

Lounge/Diner

19' 6" x 11' 11" (5.94m x 3.63m)

Double aspect with window to front and double doors leading to rear Garden.

Kitchen

Good range of cupboards and drawers beneath work surfaces, additional wall mounted units. Window to rear, space and plumbing for washing machine, gas hob with extractor over and double low level oven, inset spotlights, sink with mixer tap with understairs storage cupboard.

Landing

Doors leading to bedrooms and family bathroom, airing cupboard.

Bedroom

11' 11" x 10' 6" (3.63m x 3.20m)

Window outlook to front built in mirror fronted wardrobes.



Enhanced with AI by



Bedroom

13' 6" x 9' 1" (4.12m x 2.77m)

Window outlook to rear.

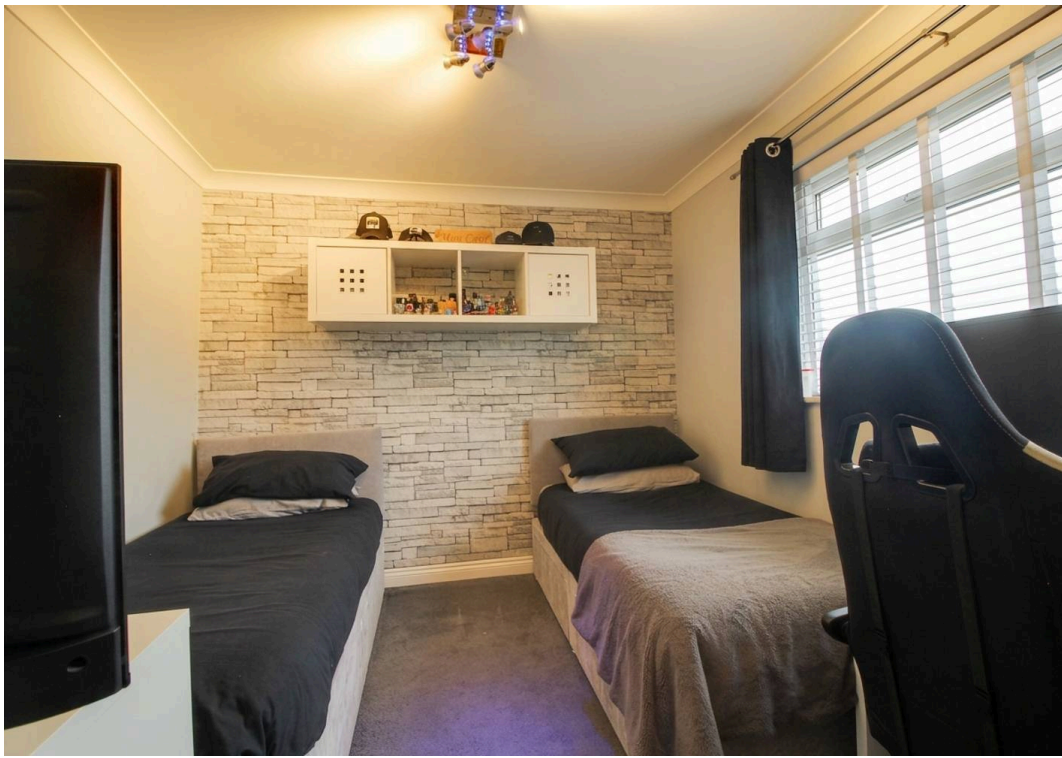
Bedroom

10' 9" x 9' 5" (3.28m x 2.87m)

Window outlook to front.

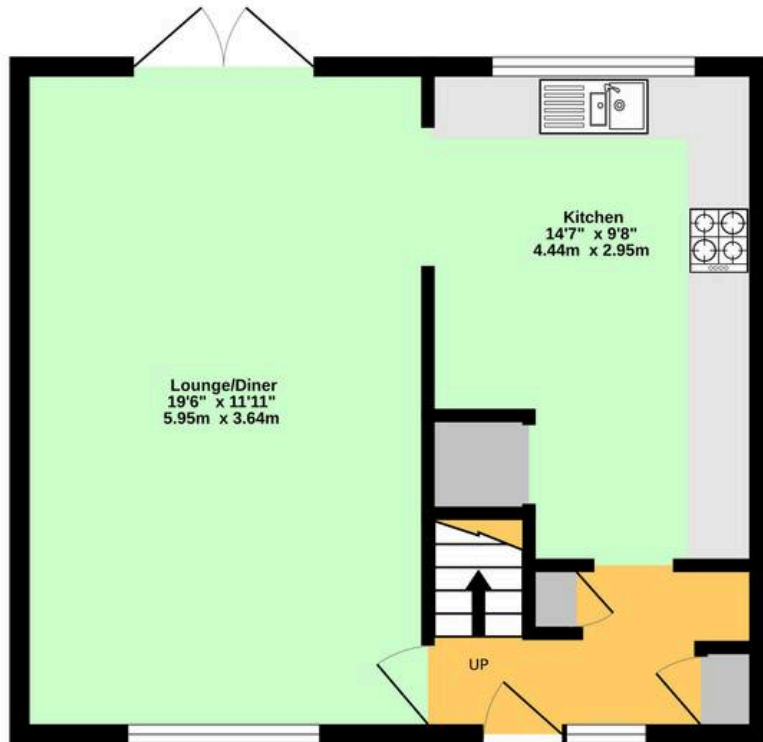
Family Bathroom

White suite comprising low level wc, wash hand basin with mixer tap and vanity storage under, p-shaped bath with mixer tap and shower over rainforest shower head with shower screen, obscured window to rear, fully tiled walls.

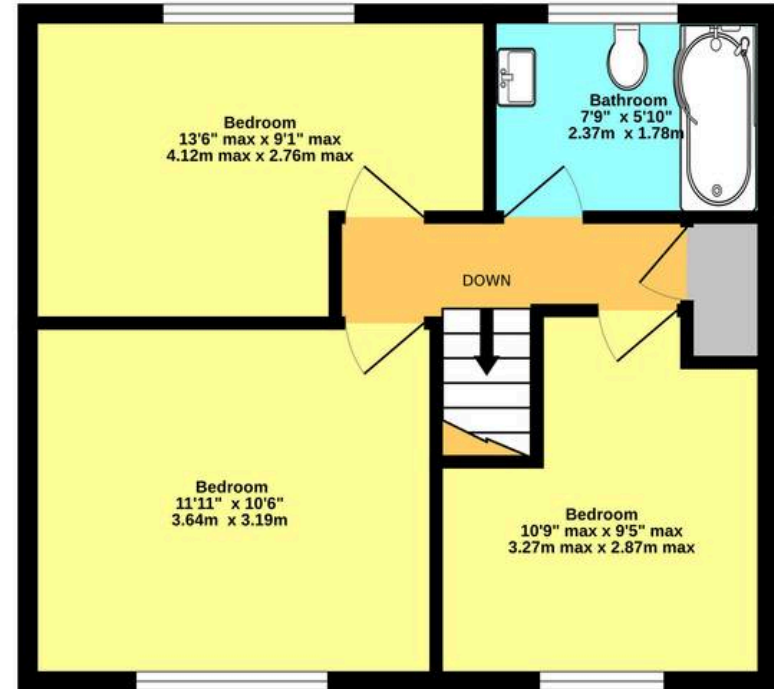




Ground Floor



1st Floor



Whilst every attempt has been made to ensure the accuracy of the floorplan contained here, measurements of doors, windows, rooms and any other items are approximate and no responsibility is taken for any error, omission or mis-statement. This plan is for illustrative purposes only and should be used as such by any prospective purchaser. The services, systems and appliances shown have not been tested and no guarantee as to their operability or efficiency can be given.
Made with Metropix ©2026





Skippers Estate Agents – Ashford

5 Kings Parade High Street, Ashford – TN24 8TA

01233 632383

ashford@skippers-ea.co.uk

skippers-ea.co.uk



