



87 Harvey Road, Willesborough
£350,000

Skippers

87 Harvey Road

Willesborough, Ashford

Well-presented 3-bedroom semi-detached home in sought-after Willesborough, offered with no onward chain. Featuring open-plan living, modern kitchen and bathroom, ample parking, garage and a private garden, all close to schools, William Harvey Hospital, the M20 and Ashford International.

Council Tax band: C

Tenure: Freehold

- Three-bedroom semi-detached home
- No onward chain
- Popular Willesborough location
- Spacious through lounge/diner
- Modern fitted kitchen
- Contemporary family bathroom with bath & shower
- Driveway parking for multiple vehicles
- Garage and secure gated parking
- Private rear garden with patio and lawn
- Close to schools, William Harvey Hospital, M20 and Ashford International



Hallway

Composite door to the front with sidelight window, stairs to the first-floor with under-stairs storage cupboard (plumbing and space within the cupboard for the washing machine) access through into the Lounge/Dining space.

Lounge/Diner

11' 7" x 22' 2" (3.53m x 6.76m)

Window to the front and doors to the garden, radiators and fitted carpet. Open to the Kitchen.

Kitchen

7' 9" x 7' 7" (2.35m x 2.30m)

Window to the rear overlooking the garden, tiled splashback and vinyl flooring. Fitted kitchen comprising matching wall and base units with worksurfaces over, inset composite sink/drain, built-in electric double oven, 5-burner gas hob with extractor over, plumbing and space for washing machine and fridge/freezer.

Landing

Doors to all rooms, loft access, window to the side and carpet fitted to the stairs and landing.

Bedroom 1

12' 4" x 11' 1" (3.77m x 3.39m)

Window to the rear, radiator and fitted carpet.

Bedroom 2

11' 2" x 9' 9" (3.40m x 2.96m)

Window to the front, radiator and fitted carpet.

Bedroom 3

8' 6" x 7' 11" (2.60m x 2.41m)

Window to the front, radiator and fitted carpet.

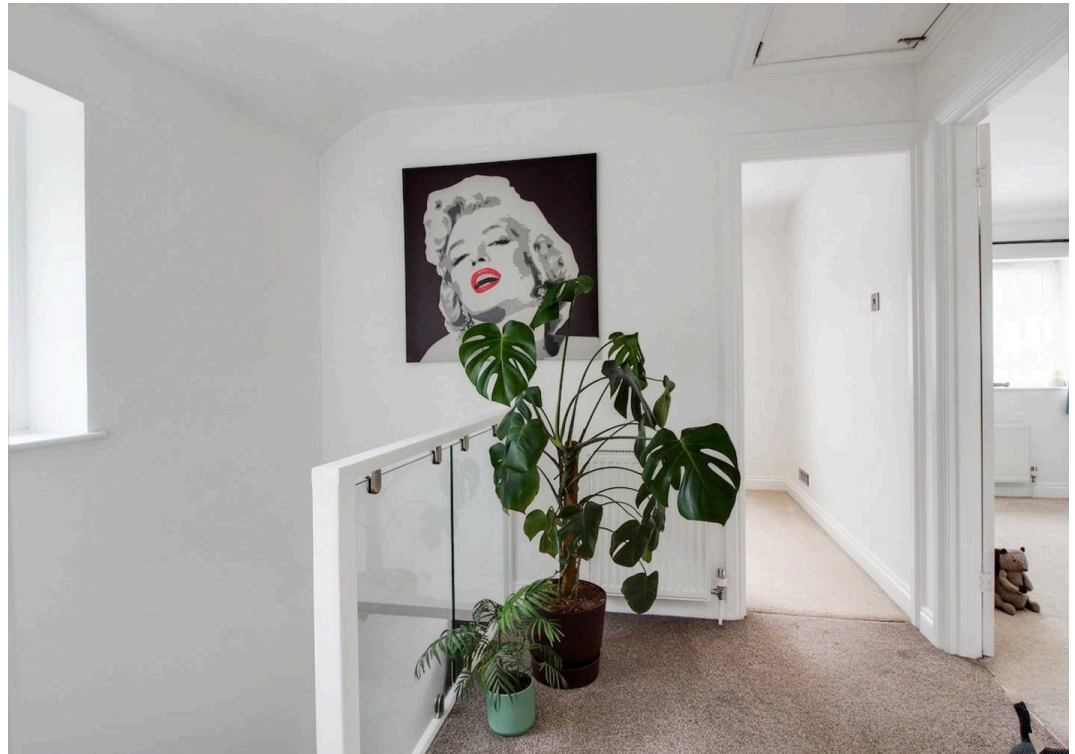
Bathroom

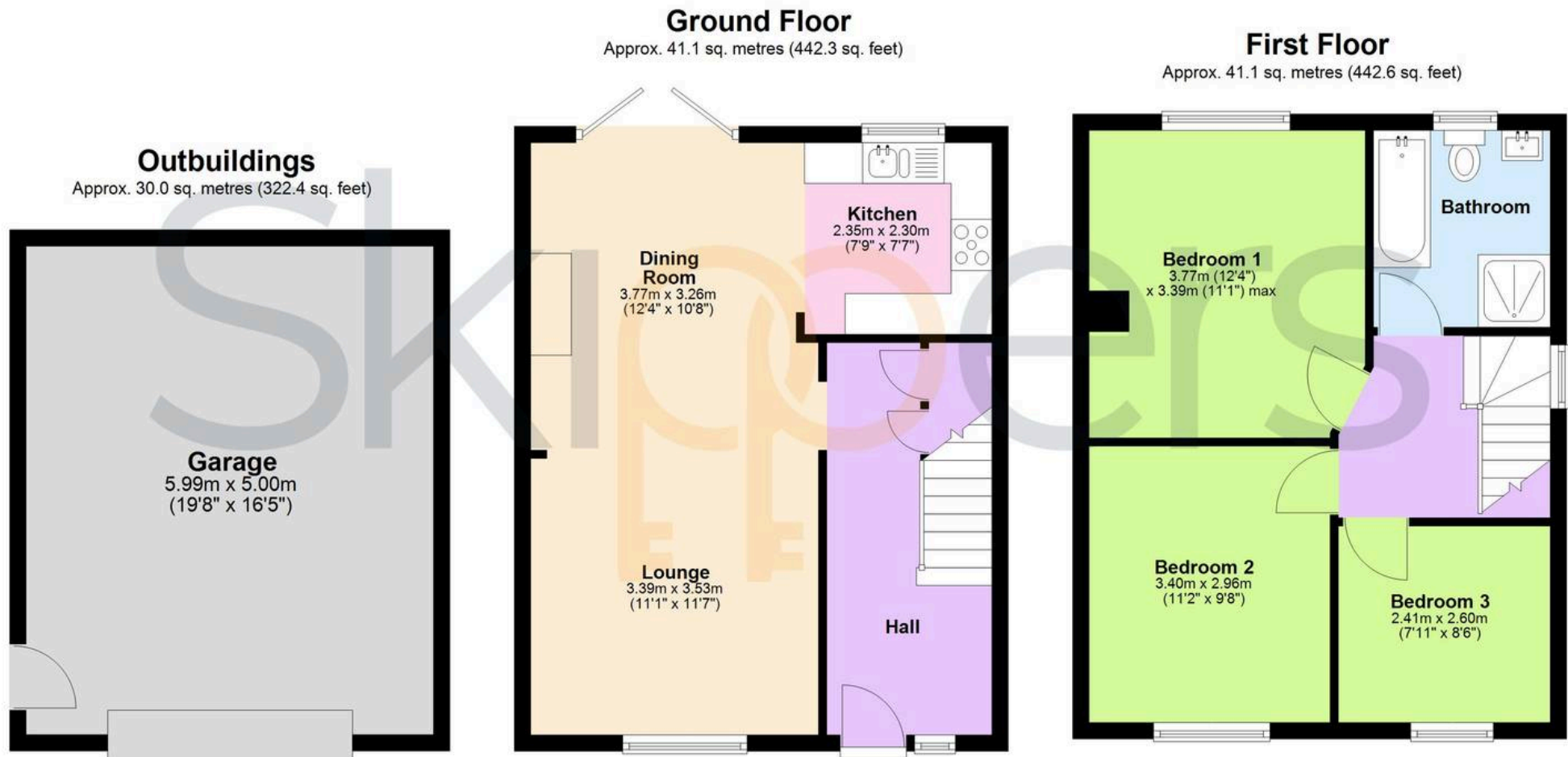
Window to the rear, square shower enclosure with thermostatic shower, bath with mixer taps, WC, wash basin with storage beneath, towel radiator, half height wall tiling (fully tiled to the shower enclosure) and vinyl flooring.











Total area: approx. 112.2 sq. metres (1207.3 sq. feet)



Skippers Estate Agents – Ashford

5 Kings Parade High Street, Ashford – TN24 8TA

01233 632383

ashford@skippers-ea.co.uk

skippers-ea.co.uk



