



56 Hawks Way, Ashford

Guide Price **£265,000**

Skippers

56 Hawks Way

Ashford, Ashford

Well presented three-bedroom end terrace home in Hawks Way, Ashford, featuring a spacious kitchen/diner, modern bathroom, landscaped rear garden and parking for two vehicles, conveniently located for local amenities, transport links and Ashford International.

Council Tax band: C

Tenure: Freehold

- Three-bedroom end terrace home
- Well presented throughout
- Spacious lounge
- Kitchen/diner ideal for entertaining
- Modern family bathroom with Quadrant shower enclosure
- Built-in wardrobes to main bedroom
- Landscaped rear garden
- Parking for two vehicles
- Convenient access to Ashford International and M20



Lounge

14' 8" x 14' 0" (4.46m x 4.27m)

Part glazed composite door and window to the front, stairs to the first floor, radiator and fitted carpet.

Kitchen / diner

14' 0" x 9' 8" (4.27m x 2.94m)

Sliding doors to the garden, under-stairs storage cupboard, radiator and vinyl flooring. Fitted kitchen comprising matching wall and base units with worksurfaces over, inset 1.5 bowl composite sink/drain, space for a free-standing electric cooker, space and plumbing for a washing machine and space for a free-standing fridge/freezer.

Landing

Doors to each room, loft access, airing cupboard, storage cupboard and carpets fitted to the stairs and landing.

Bedroom 1

14' 0" x 8' 2" (4.27m x 2.50m)

Window to the rear, fitted wardrobes, radiator and laminate wood flooring.

Bedroom 2

9' 7" x 7' 4" (2.91m x 2.23m)

Window to the front, radiator and fitted carpet.

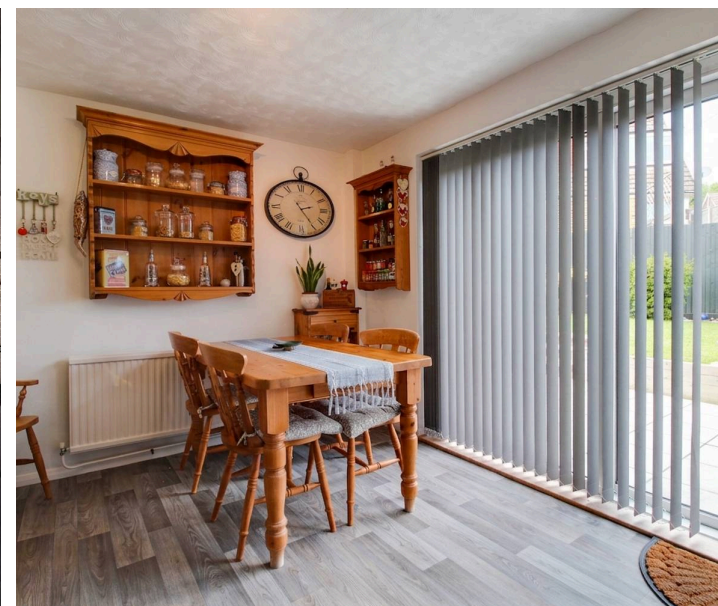
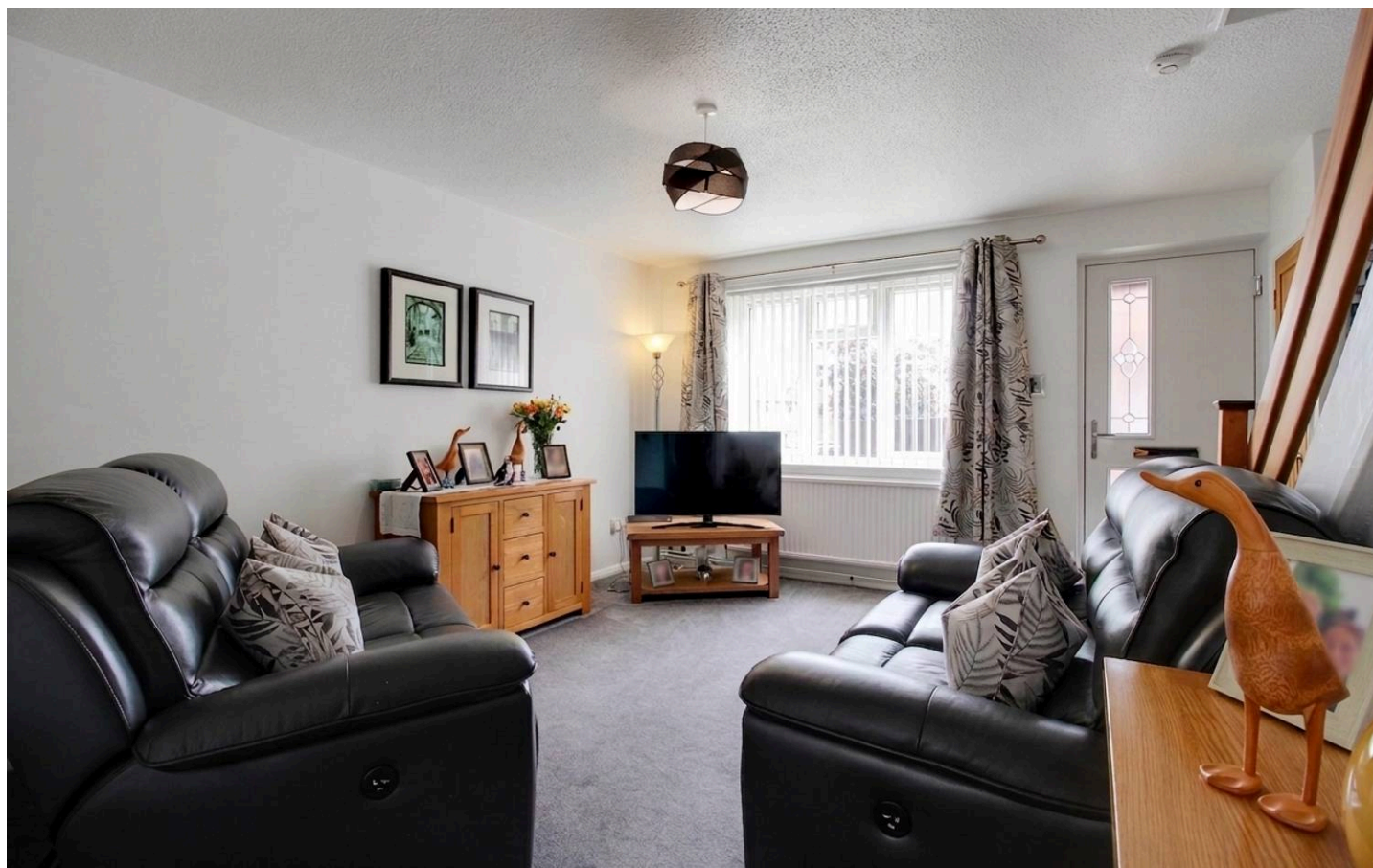
Bedroom 3

6' 5" x 6' 4" (1.96m x 1.94m)

Window to the front, radiator and fitted carpet.

Bathroom

Modern bathroom suite comprising a quadrant shower cubicle with thermostatic shower, WC, wash basin with storage cupboard beneath, towel radiator, extractor fan, tiled walls and vinyl flooring.



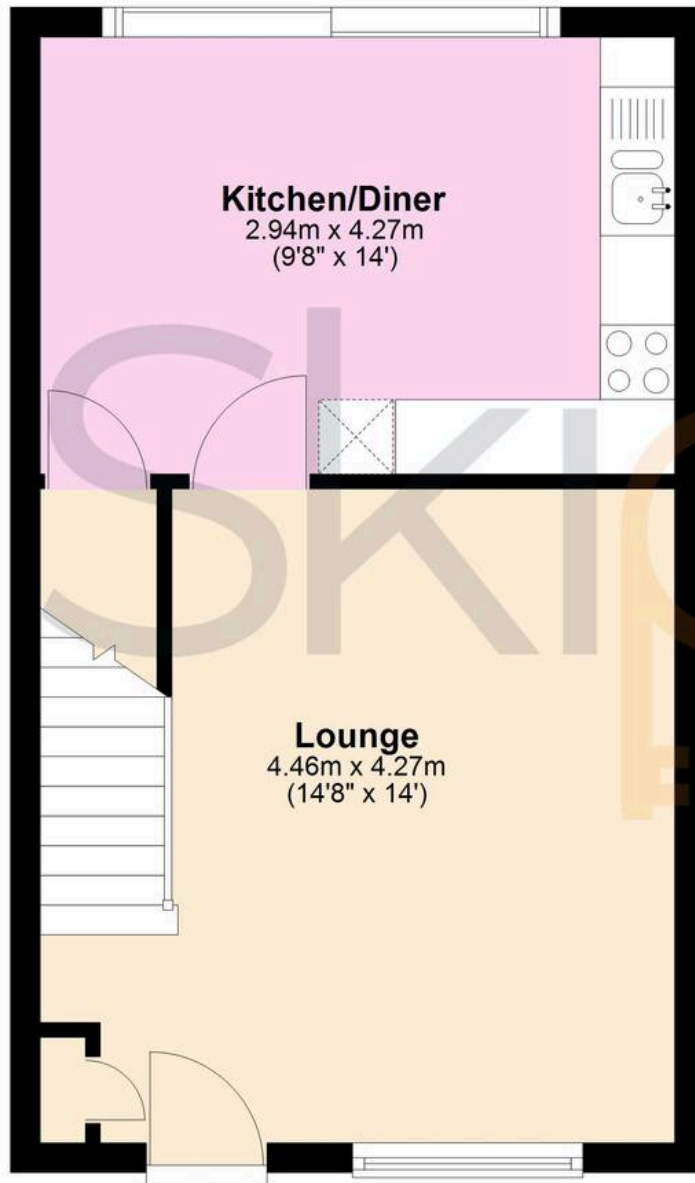






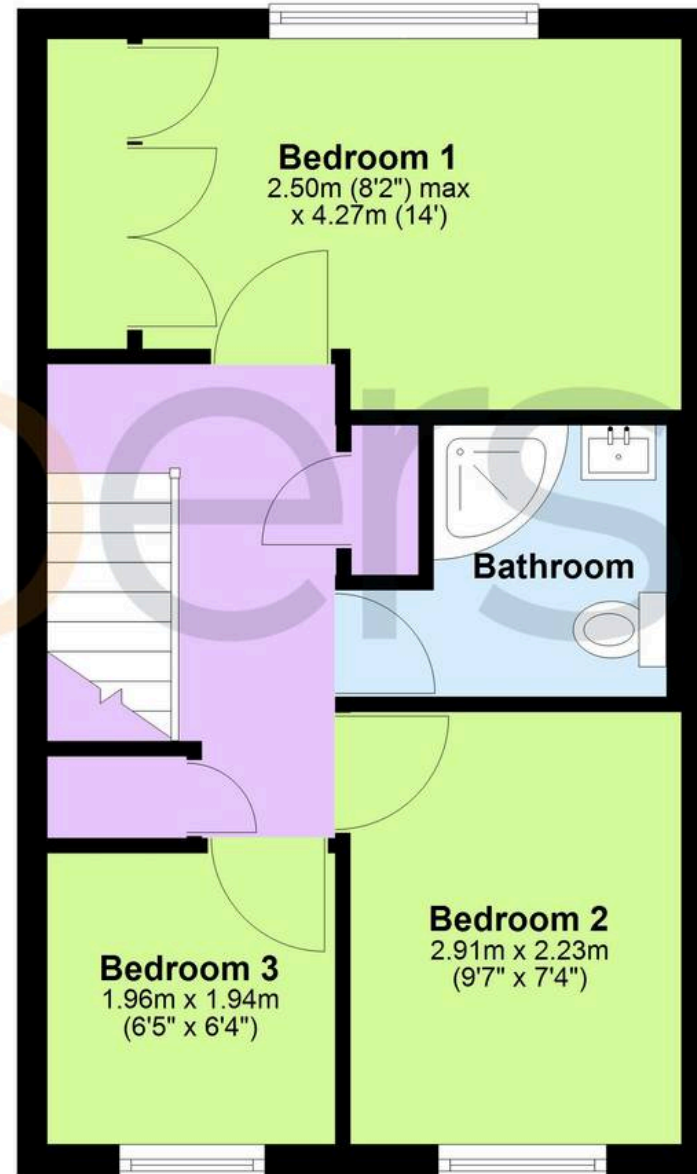
Ground Floor

Approx. 32.0 sq. metres (344.7 sq. feet)



First Floor

Approx. 31.8 sq. metres (342.0 sq. feet)



Total area: approx. 63.8 sq. metres (686.7 sq. feet)



Skippers Estate Agents – Ashford

5 Kings Parade High Street, Ashford – TN24 8TA

01233 632383

ashford@skippers-ea.co.uk

skippers-ea.co.uk

Skippers

