



## 9 Westbourne, Ashford

Offers in Region of £310,000

**Skippers**

## 9 Westbourne

Ashford, Ashford

Well-presented 3-bed semi in quiet cul-de-sac. Modern kitchen, spacious living areas, large garden, driveway for 3 cars. Near schools, parks, amenities, Ashford station. No onward chain. Council Tax band: C

Tenure: Freehold

- NO ONWARD CHAIN
- Semi-Detached Family Home
- 3 Bedrooms
- South Westerly Facing Private Rear Garden with awning
- Driveway Parking for 3 Vehicles
- Lounge & Separate Dining Room
- Modern Fitted Kitchen
- Cul-de- Sac position within prime location close to schools, local amenities, parks, and Ashford International Station



### Hallway

Porch with inner door through to hallway with stairs to first floor with the benefit of an understairs cupboard.

### Lounge

14' 1" x 11' 3" (4.29m x 3.43m)

Window outlook to front with door through to Dining Room.

### Kitchen

9' 11" x 7' 9" (3.02m x 2.36m)

Range of cupboards and drawers beneath mottled effect work tops with additional wall mounted units. Window to rear and archway through to Dining Room and door to inner hallway. Stainless steel sink with mixer tap and drainer, electric hob with extractor fan over and low level oven, space and plumbing for washing machine. Partially tiled walls.

### Dining Room

9' 3" x 8' 6" (2.82m x 2.59m)

Door through to Lounge and patio doors to rear Garden.





### Landing

Window to side, doors leading through to Bedrooms and family Bathroom.

### Bedroom

12' 2" x 9' 6" (3.71m x 2.90m)

Window to front with double built in wardrobe.

### Bedroom

9' 9" x 8' 6" (2.97m x 2.59m)

Window to rear with double built in wardrobe.

### Bedroom

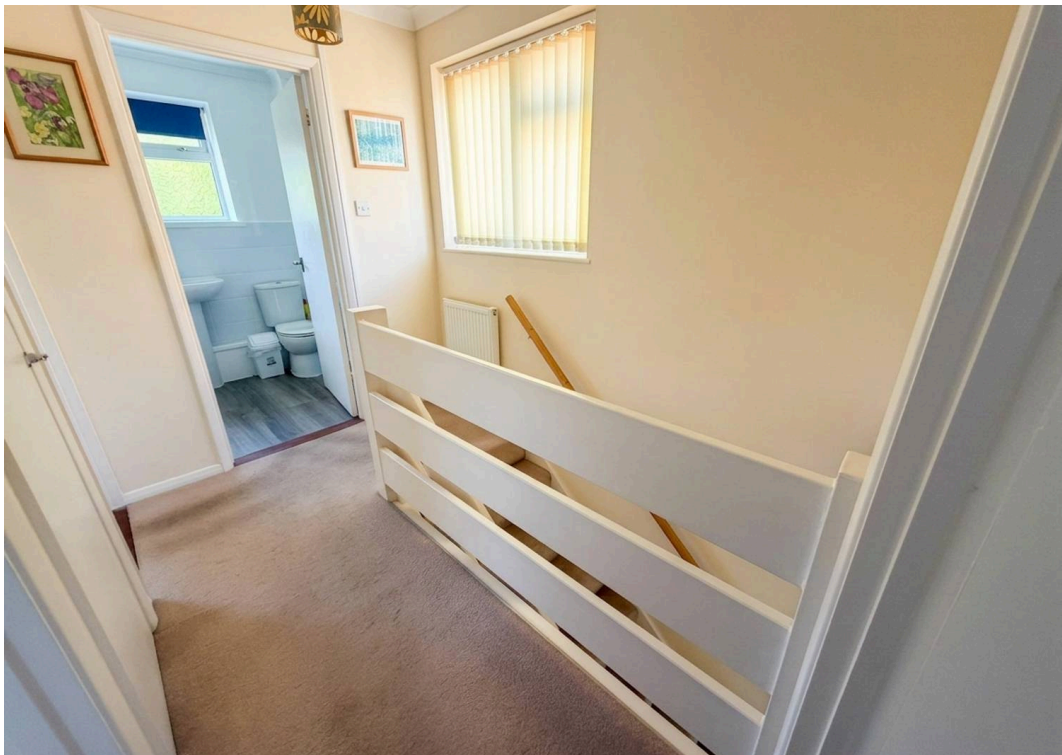
8' 4" x 7' 7" (2.54m x 2.31m)

Window to front and over stairs storage cupboard.

### Family Bathroom

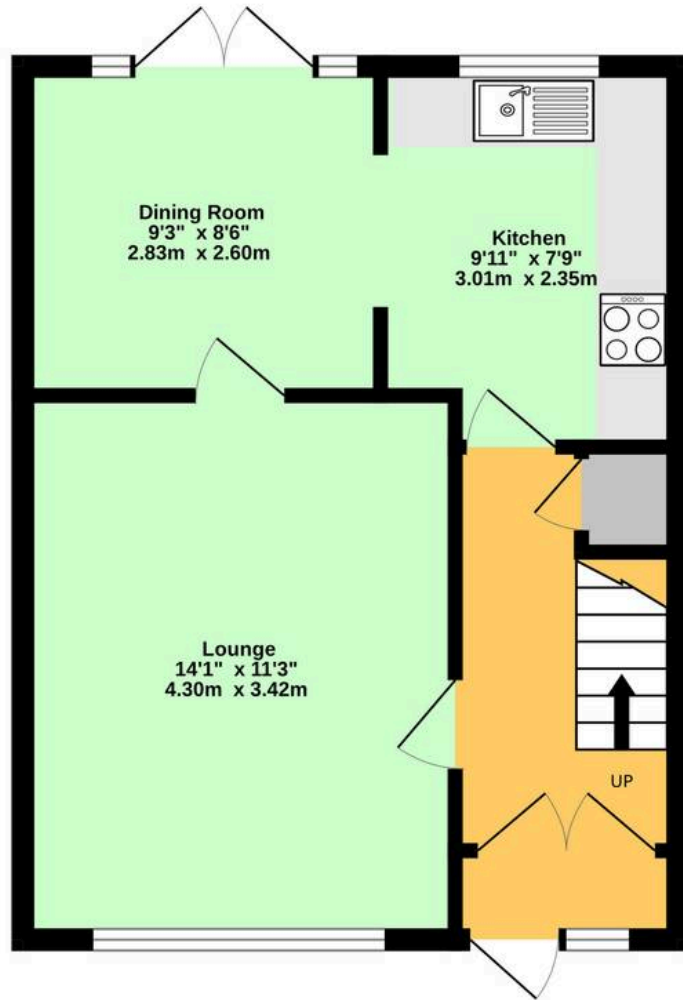
White suite comprising low level wc, pedestal wash hand basin with mixer tap and shower attached with additional electric shower over and shower screen. Obscured window to rear. Partially tiled walls.



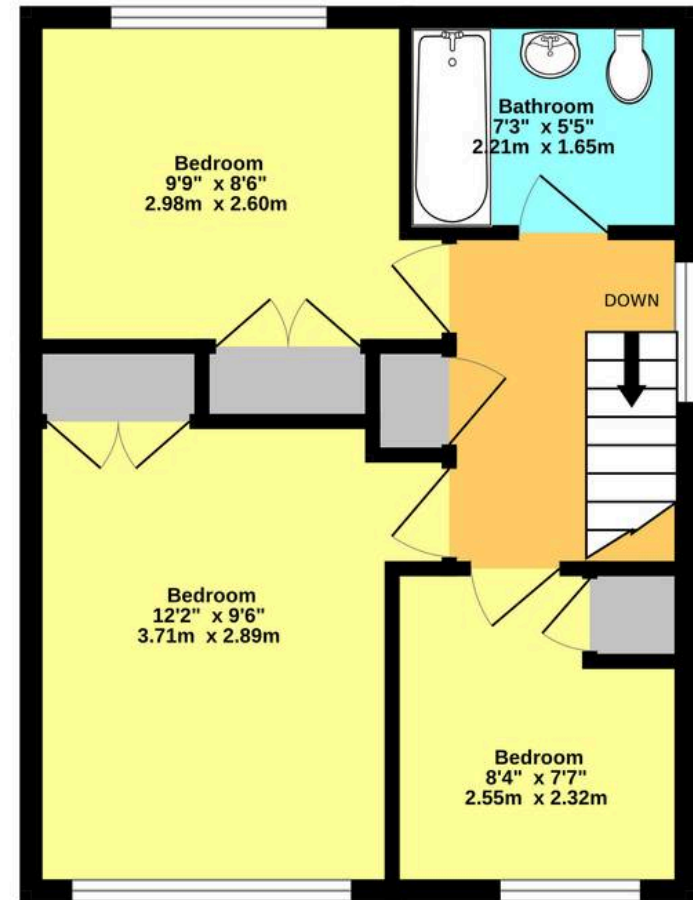




Ground Floor

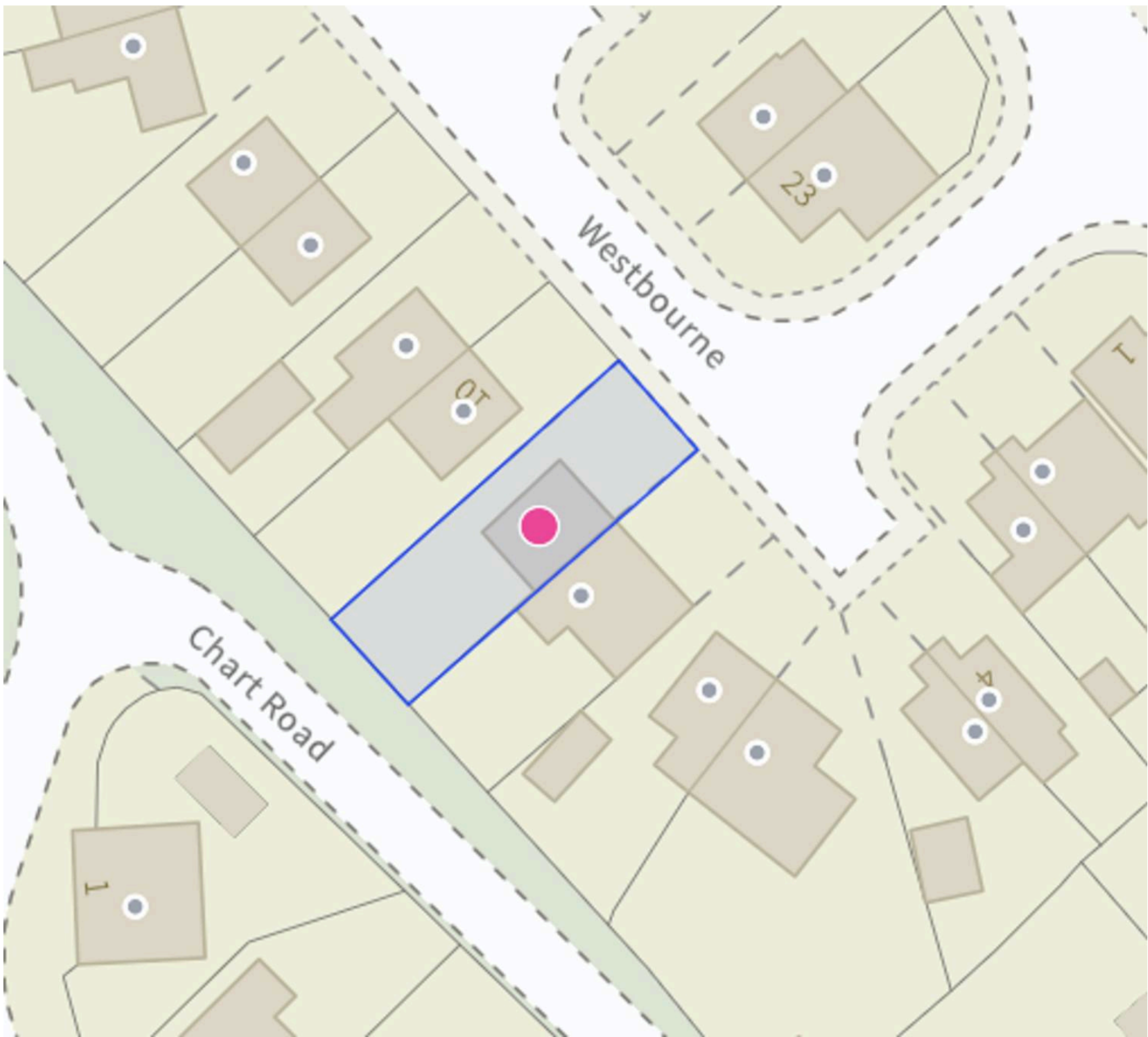


1st Floor



Whilst every attempt has been made to ensure the accuracy of the floorplan contained here, measurements of doors, windows, rooms and any other items are approximate and no responsibility is taken for any error, omission or mis-statement. This plan is for illustrative purposes only and should be used as such by any prospective purchaser. The services, systems and appliances shown have not been tested and no guarantee as to their operability or efficiency can be given.  
Made with Metropix ©2026







## Skippers Estate Agents – Ashford

5 Kings Parade High Street, Ashford – TN24 8TA

01233 632383

[ashford@skippers-ea.co.uk](mailto:ashford@skippers-ea.co.uk)

[skippers-ea.co.uk](http://skippers-ea.co.uk)



