



25 Richmond Meech Drive, Kennington  
£350,000

Skippers

## 25 Richmond Meech Drive

Kennington, Ashford

Spacious 3/4-bed townhouse in Little Burton, Kennington. Three bathrooms, flexible living, garage, private garden, near schools and amenities. Ideal for families or as a buy-to-let investment. Council Tax band: E

Tenure: Freehold

- Three-four bedroom Townhouse
- Popular Kennington Location
- En-suite shower room to main bedroom
- Walking distance of local amenities including schools, parks and shops
- Garage & driveway parking
- Ground floor shower room



### Entrance Hallway

With doors leading to all rooms, including the internal garage, Newly carpeted stairs to the first floor.

### Ground Floor Shower Room

Featuring a walk-in shower cubicle, wc and wash basin.

### Reception Room/Bedroom

14' 8" x 10' 5" (4.46m x 3.17m)

With French doors opening onto the garden, this versatile space could be utilised as a second reception room, home office, playroom, or guest bedroom.

### First Floor Landing

Doors to the kitchen/dining room and lounge and newly carpeted stairs to the second floor.

### Kitchen / diner

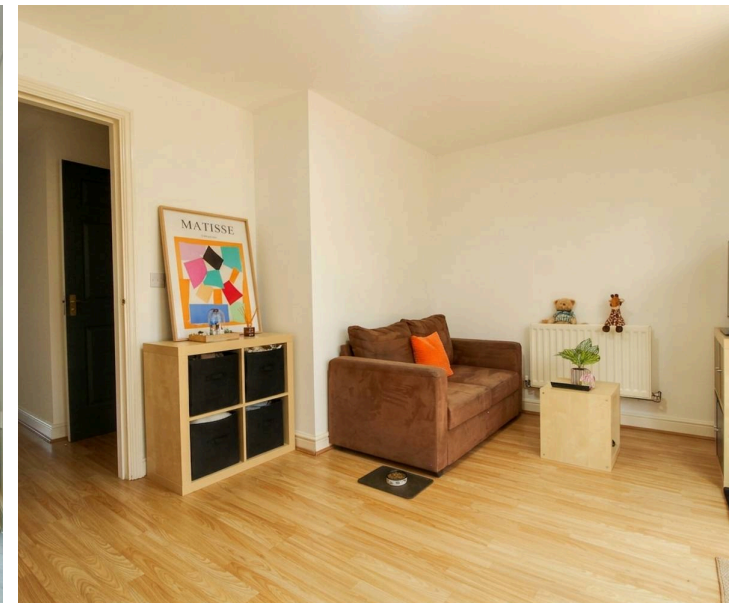
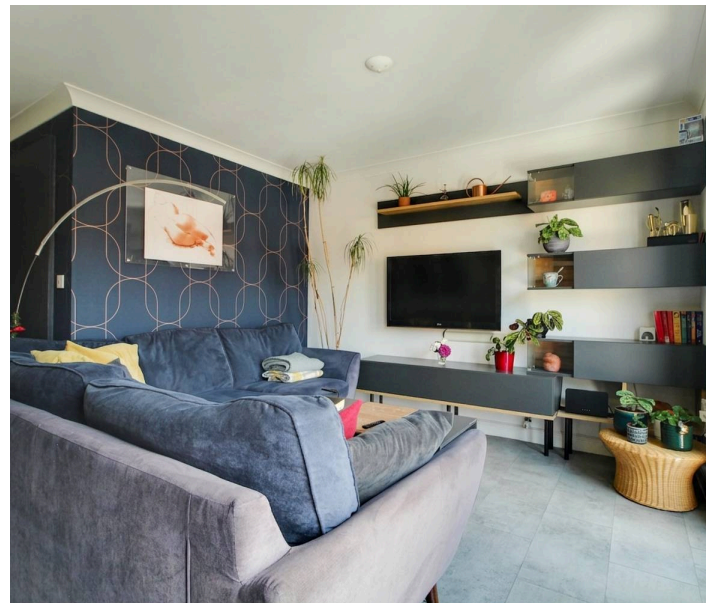
15' 11" x 14' 8" (4.84m x 4.46m)

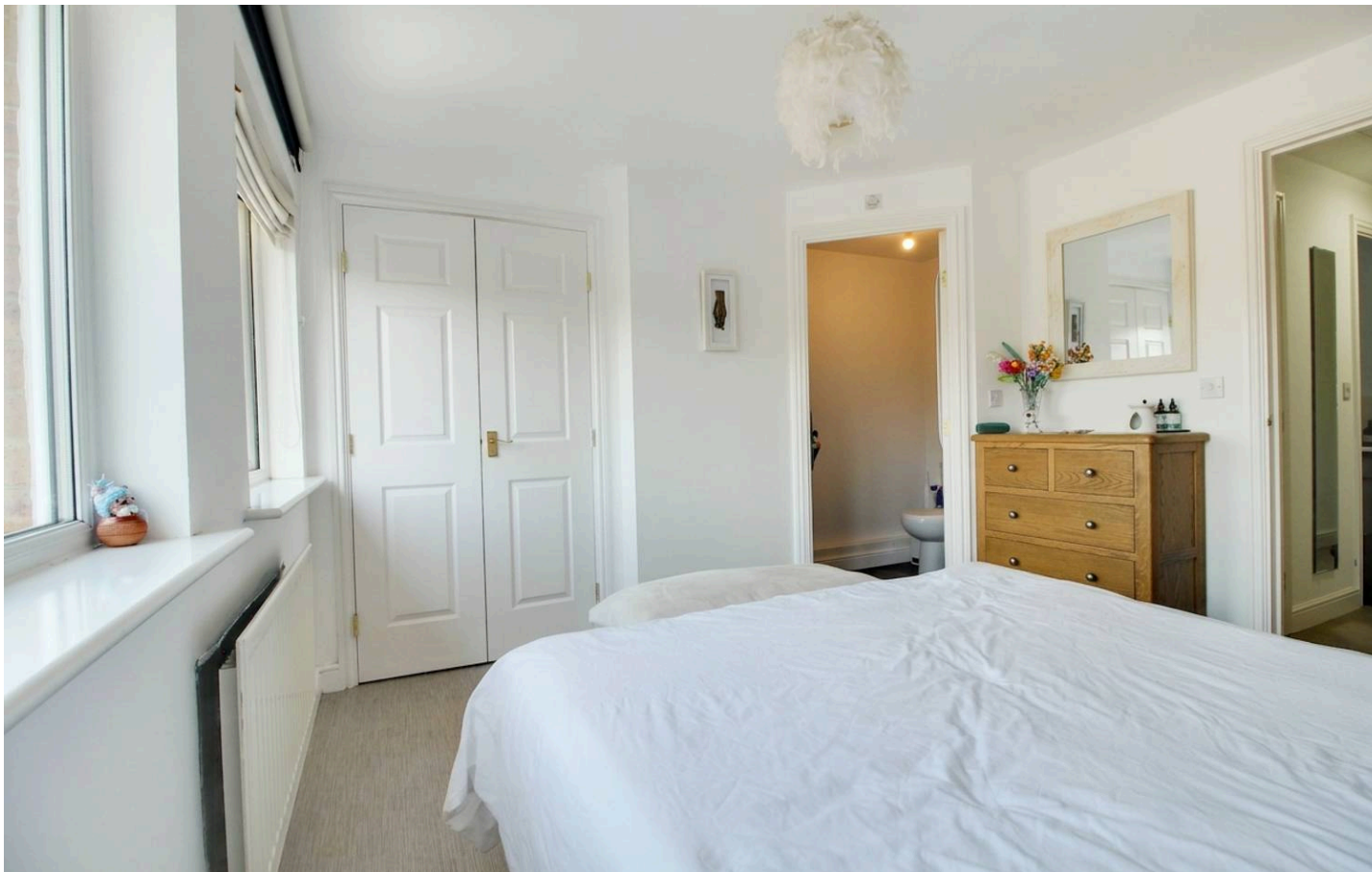
With plenty of space for dining table. Juliet balcony much like the living room overlooking the garden. The kitchen enjoys plenty of storage space and worksurfaces, oven and hob with extractor hood, space for a free-standing fridge/freezer and space and plumbing for a dishwasher.

### Lounge

16' 8" x 14' 8" (5.07m x 4.46m)

A generous sized living room, enjoying Juliet balconies to the front and open doorway into kitchen/dining room.





## Second Floor Landing

With doors leading to all the bedrooms on the top floor, family bathroom, airing cupboard and loft access.

### Bedroom 1

30' 6" x 35' 9" (9.30m x 10.90m)

Generous double bedroom, with two windows to the front, fitted wardrobes and en-suite.

### En-suite

Featuring a walk-in shower cubicle, wc and wash basin.

### Bedroom 2

11' 9" x 7' 0" (3.57m x 2.13m)

Overlooking the garden, a small double or generous single bedroom.

### Bedroom 3

10' 11" x 7' 4" (3.32m x 2.24m)

Over looking the garden, a single or home office.

### Bathroom

Modern bathroom featuring a free standing bath, w/c and sink basin.



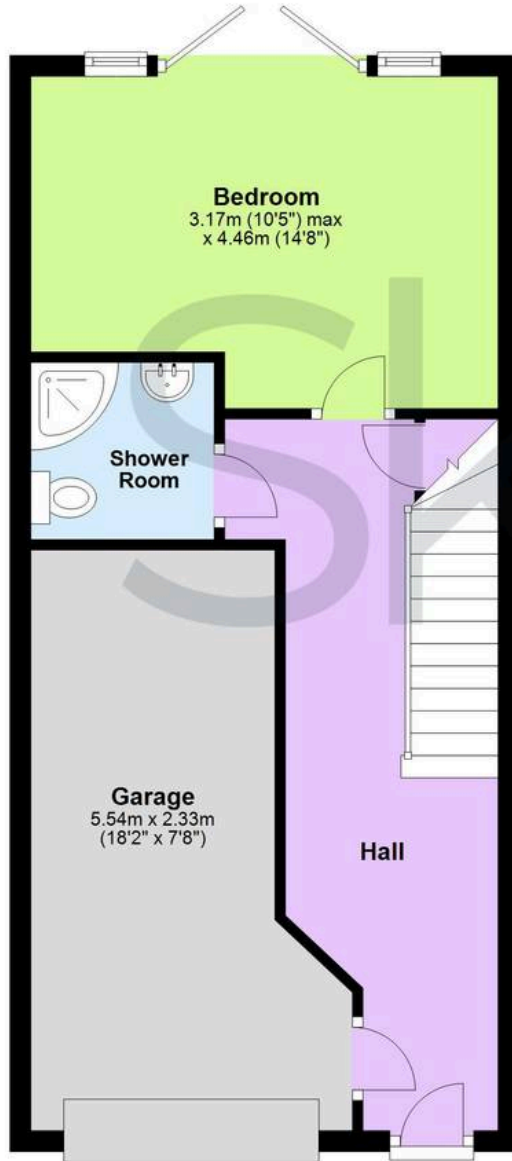






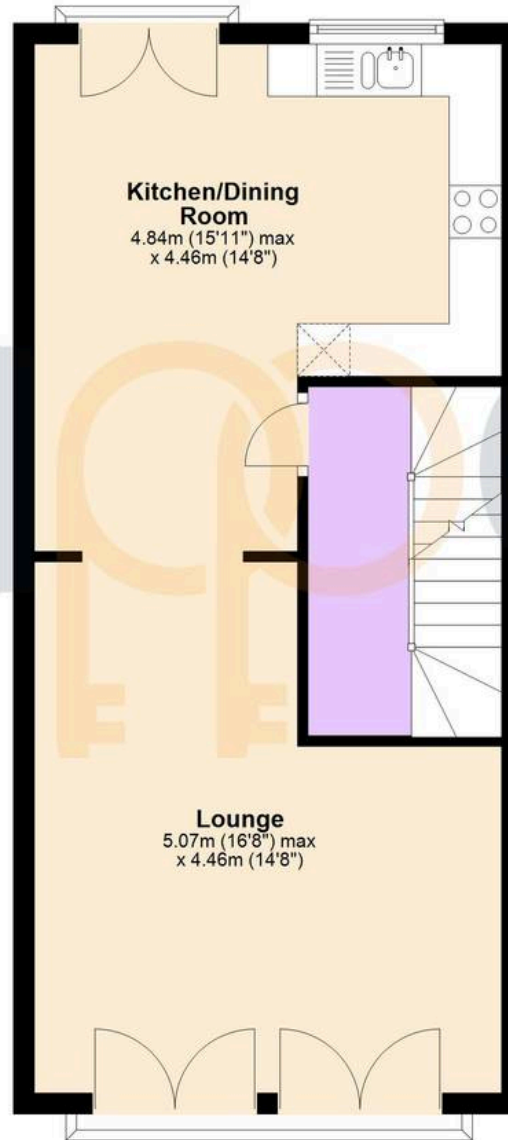
## Ground Floor

Approx. 31.2 sq. metres (336.1 sq. feet)  
(excluding Bedroom)



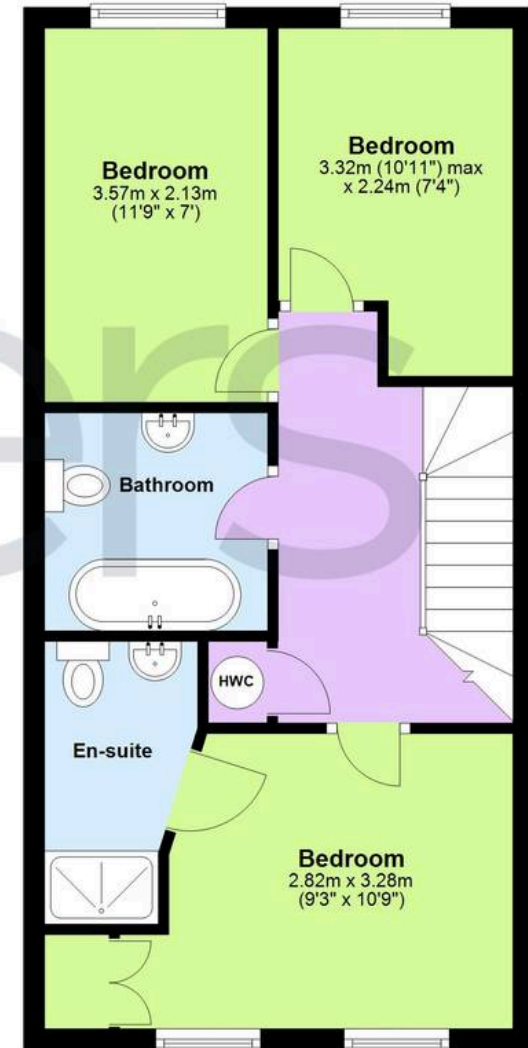
## First Floor

Approx. 44.6 sq. metres (480.6 sq. feet)  
(excluding Balcony, Balcony)



## Second Floor

Approx. 43.1 sq. metres (463.7 sq. feet)



Total area: approx. 119.0 sq. metres (1280.4 sq. feet)



## Skippers Estate Agents – Ashford

5 Kings Parade High Street, Ashford – TN24 8TA

01233 632383

[ashford@skippers-ea.co.uk](mailto:ashford@skippers-ea.co.uk)

[skippers-ea.co.uk](http://skippers-ea.co.uk)

Skippers

