



**16 Shipley Mill Close, Kingsnorth**

In Excess of **£400,000**

**Skippers**

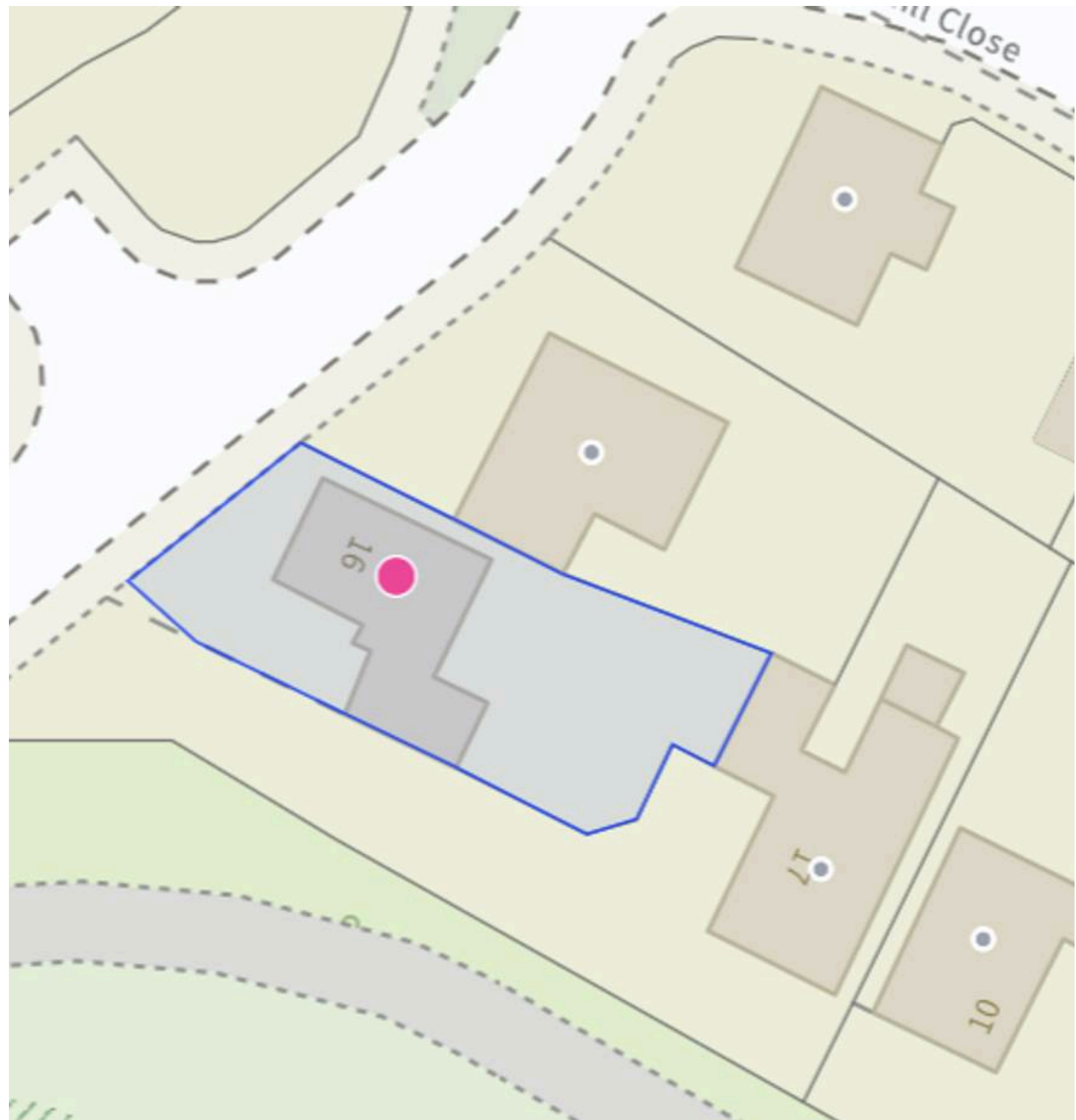
# 16 Shipley Mill Close

Kingsnorth, Ashford

Well presented three bedroom detached home on a corner plot in Park Farm, Kingsnorth. Spacious rooms, stunning garden, excellent schools and amenities nearby. Ideal for modern family living. Council Tax band: E

Tenure: Freehold

- 3 bed detached house
- Corner plot
- Sought after Park farm estate
- Within easy reach of primary and secondary schools
- Cloakroom and ensuite
- Garage and driveway



### Entrance Hallway

Welcoming entrance hallway with fitted carpet and useful under stairs storage cupboard.

### Cloakroom

Fitted with a low level WC, wash hand basin and window providing natural light and ventilation.

### Lounge

A bright and spacious reception room featuring fitted carpet and double aspect windows including an attractive bay window, allowing plenty of natural light to flow throughout the space.

### Kitchen / diner

A well presented kitchen diner fitted with luxury vinyl tile flooring and radiator. Double glazed patio doors lead directly out to the rear garden creating an ideal space for entertaining and family living. The kitchen is fitted with a range of wall and base units providing ample storage together with stylish quartz-effect work surfaces. Integrated electric oven, gas hob with extractor over, plus space for fridge freezer and dishwasher





#### Landing

Carpeted landing with access to loft space which is boarded for useful storage.

#### Master Bedroom

Generous double bedroom with fitted carpet, radiator, double glazed window and built-in wardrobe.

#### Ensuite

Comprising electric shower, low level WC, large wash hand basin, radiator and window

#### Bedroom 2

Double bedroom with carpet, radiator and window.

#### Bedroom 3

Further double bedroom with carpet, radiator and window. Built-in wardrobe and airing cupboard housing the hot water cylinder.

#### Family bathroom

Fitted with vinyl flooring, radiator, low level WC, large wash hand basin and bath with hand held shower attachment.

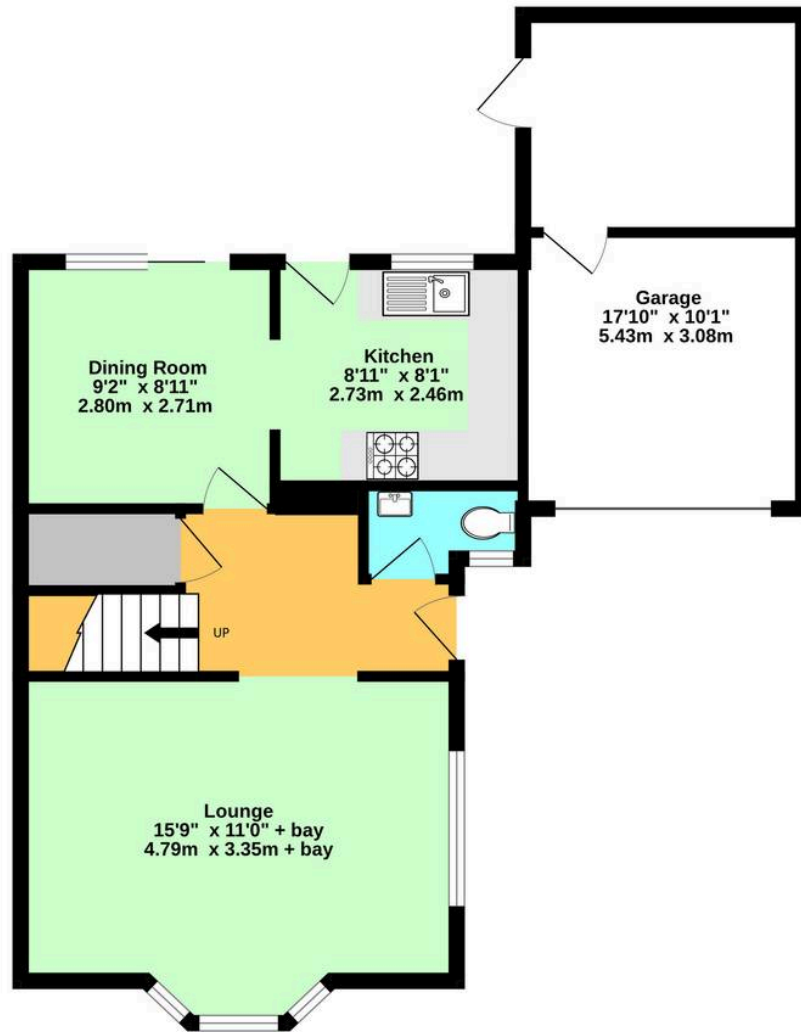




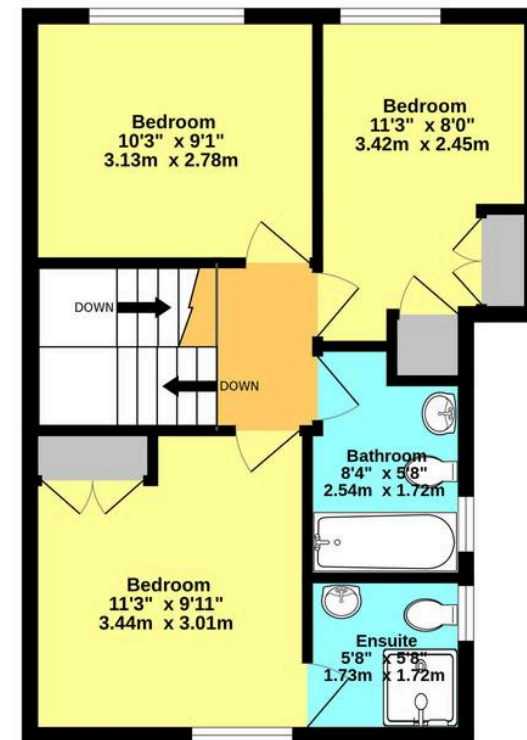




Ground Floor



1st Floor



Whilst every attempt has been made to ensure the accuracy of the floorplan contained here, measurements of doors, windows, rooms and any other items are approximate and no responsibility is taken for any error, omission or mis-statement. This plan is for illustrative purposes only and should be used as such by any prospective purchaser. The services, systems and appliances shown have not been tested and no guarantee as to their operability or efficiency can be given.  
Made with Metropix ©2026



## Skippers Estate Agents – Ashford

5 Kings Parade High Street, Ashford – TN24 8TA

01233 632383

[ashford@skippers-ea.co.uk](mailto:ashford@skippers-ea.co.uk)

[skippers-ea.co.uk](http://skippers-ea.co.uk)

Skippers

