



## 2 Common Way, Hothfield

Offers in Region of £295,000

Skippers

## 2 Common Way

Hothfield, Ashford

Modernised 3-bed mid-terrace in Hothfield with new kitchen, bathroom, and boiler. Spacious living, large gardens, shed with power, close to amenities and transport. Ideal for families or professionals.

Council Tax band: B

Tenure: Freehold

- Well Presented Mid Terraced Family Home
- Popular and Convenient Hothfield Village Location
- Modernised Throughout with New Kitchen, Bathroom and Combination Boiler
- Large Front Garden with Low Maintenance Rear Garden with Benefit or Workshop with Light & Electric
- Open Plan Kitchen/Diner
- Lounge with outlook to front
- Good Access to Local Amenities including Primary School and A20 leading to Ashford
- Three Bedrooms



### Hallway

Stairs leading to first floor with doors to lounge and kitchen/diner.

### Lounge

13' 10" x 11' 2" (4.22m x 3.40m)

Window outlook to front, archway through to kitchen/diner.

### Kitchen/Diner

20' 2" x 9' 6" (6.15m x 2.90m)

Range of shaker style cupboards and drawers beneath work surfaces, with additional wall mounted cupboards and breakfast bar, window and double doors leading to rear, inset spotlights, space and plumbing for washing machine. stainless steel sink with mixer tap and drainer, electric hob with low level oven and extractor fan over, large understairs storage cupboard.





### Landing

Doors to bedrooms and family bathroom.

### Bedroom

11' 6" x 11' 6" (3.51m x 3.51m)

Window outlook to front and built in wardrobes.

### Bedroom

12' 5" x 8' 5" (3.79m x 2.57m)

Window outlook to rear and built in storage cupboard.

### Bedroom

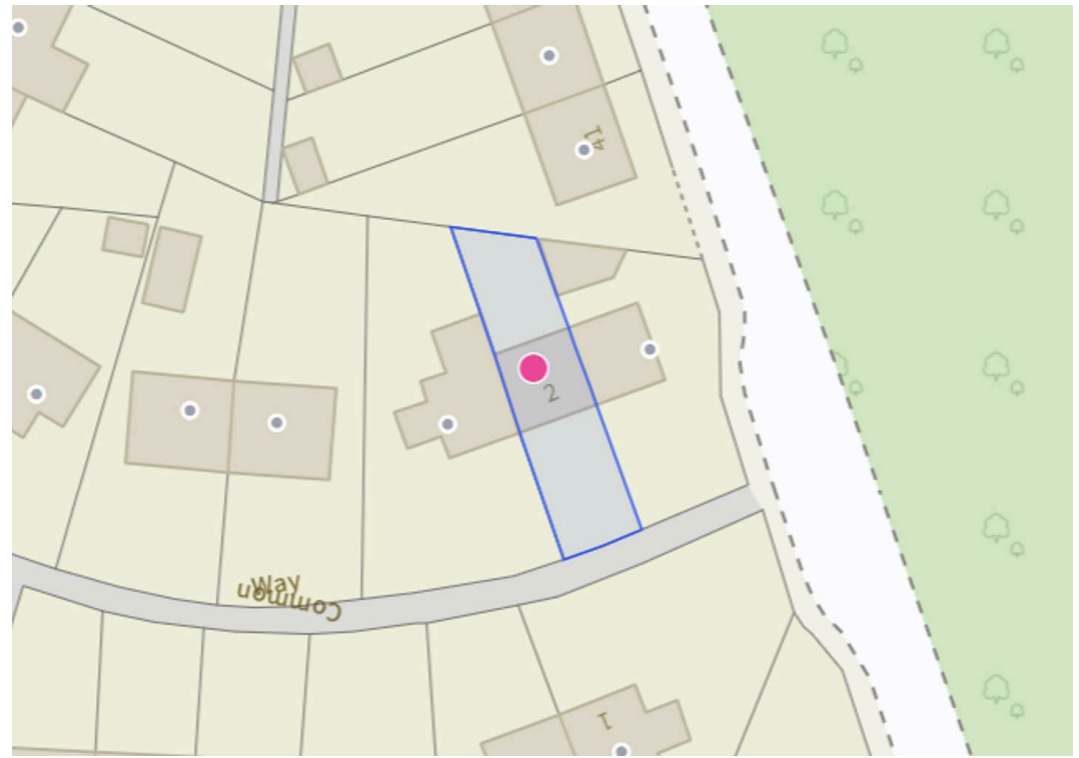
9' 0" x 8' 8" (2.74m x 2.64m)

Window outlook to front.

### Bathroom

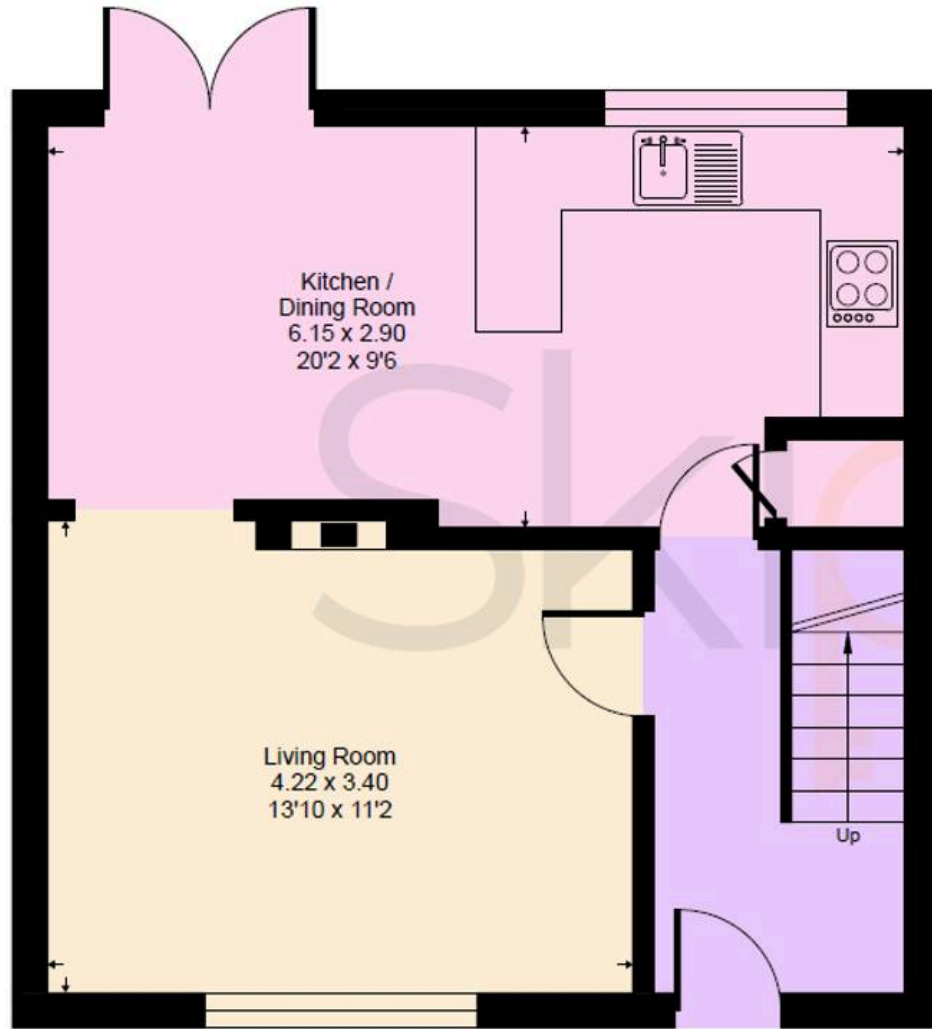
White suite comprising low level wc, pedestal wash hand basin with mixer tap, panelled bath with mixer tap and shower attachment, partially tiled walls, obscured window to rear, heated towel radiator.





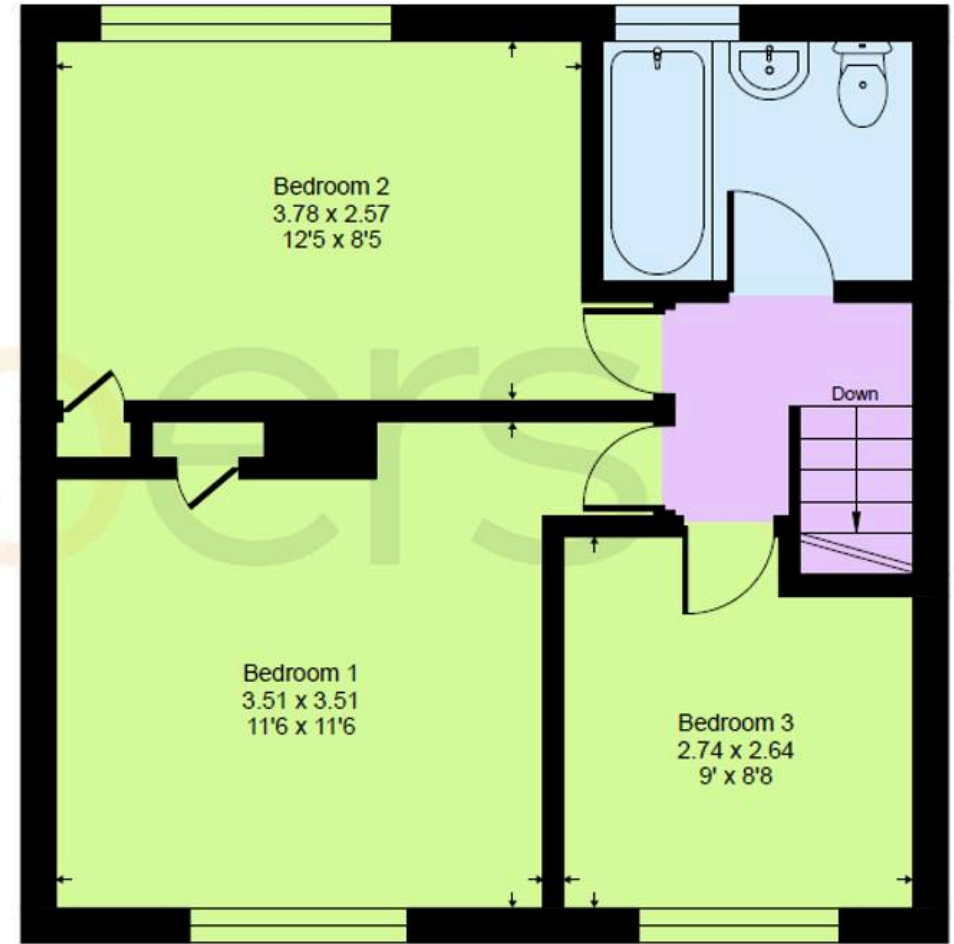
# Common Way, TN26

Approximate Gross Internal Area = 77.1 sq m / 830 sq ft



Ground Floor

↑  
IN



First Floor



## Skippers Estate Agents – Ashford

5 Kings Parade High Street, Ashford – TN24 8TA

01233 632383

[ashford@skippers-ea.co.uk](mailto:ashford@skippers-ea.co.uk)

[skippers-ea.co.uk](http://skippers-ea.co.uk)

Skippers

